



Celebrating 3 years

Happy Anniversary
SMART!





Celebrating 3 years

SMART is currently a 45-mile rail line with 12 stations serving cities in Sonoma and Marin counties, and with a bicycle and pedestrian pathway network along the rail corridor. An extension of the rail line is being constructed to offer passenger rail service to Windsor in 2021.

As an integral part of the fabric of the North Bay, SMART has been here through fires, floods, economic recessions and a viral pandemic and we'll continue to proudly serve in the good times and through the rough patches. In 2020, in response to COVID-19, SMART staff have implemented train sanitizing protocols to protect the health of our passengers and staff.

We are very proud of the team of dedicated professionals who make up SMART staff and the vital service they provide to the North Bay.

Eric Lucan,
Chair, SMART Board of Directors

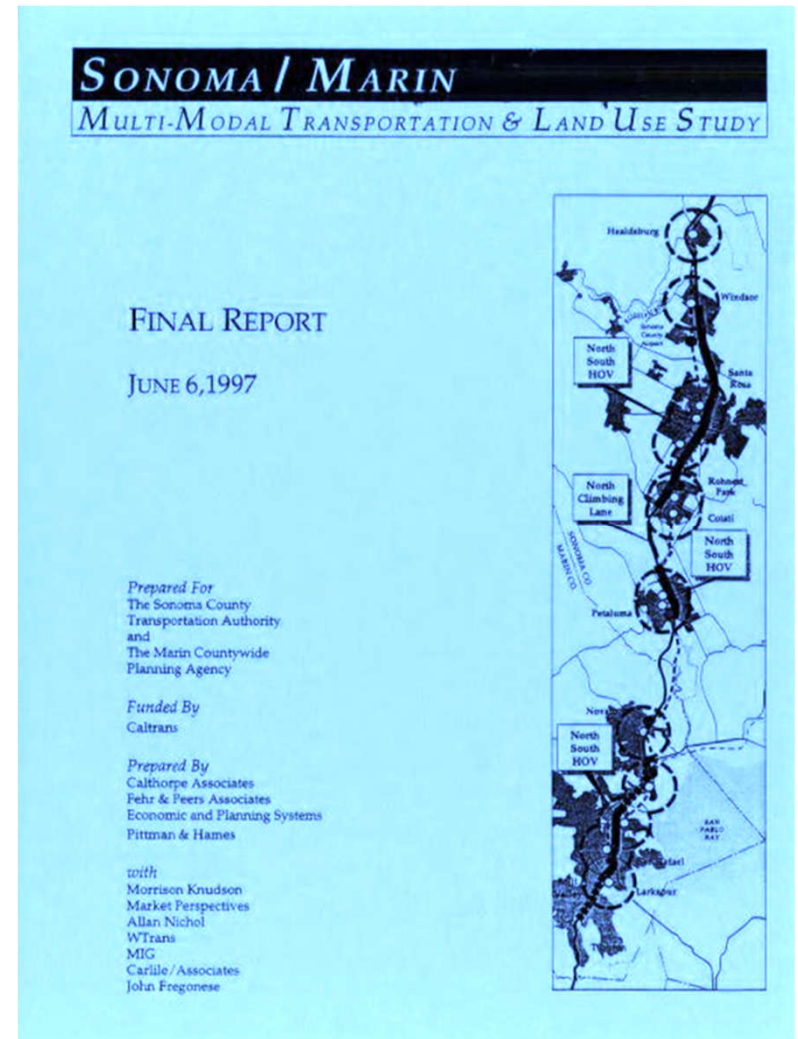
Barbara Pahre,
Vice Chair, SMART Board of Directors



Celebrating 3 years

It Began With a Vision

In 1997, the Sonoma/Marin Multi-Modal Transportation and Land Use Study by Peter Calthorpe laid out a vision for re-establishing passenger rail in the North Bay.





Celebrating 3 years

The SMART Commission

In 1998 a two-part sales tax measure was placed on the ballot to raise funds for passenger rail.

Measure B, the plan for passenger rail passed with a 70% majority, and Measure C – providing the funding for the plan failed to get a simple majority.

In the wake of Measure B's strong showing at the ballot box, The Sonoma Marin Area Rail Transit (SMART) Commission was formed.



*Local environmentalists
pick up the pieces
after defeat of
transit tax plan*

*Sonoma County Independent
November 5-11, 1998*

Preparing the ground for the next sales tax measure

The SMART Commission built a tiny organization consisting of a single employee and a handful of consultants.

The SMART Commission:

- Hired the engineering team that designed the rail alignment
- Established the Bicycle Pedestrian Advisory Group, who laid out the multi-use pathway network
- Hired the communications team that prepared the ground for the next sales tax measure



*Rail Backers Push for Vote
Commuter Crunch:
Supporters of passenger
train linking Sonoma, Marin
counties optimistic sales tax
can win in 2004 despite
dismal history, strong
opposition*

*Press Democrat
April 26, 2002*



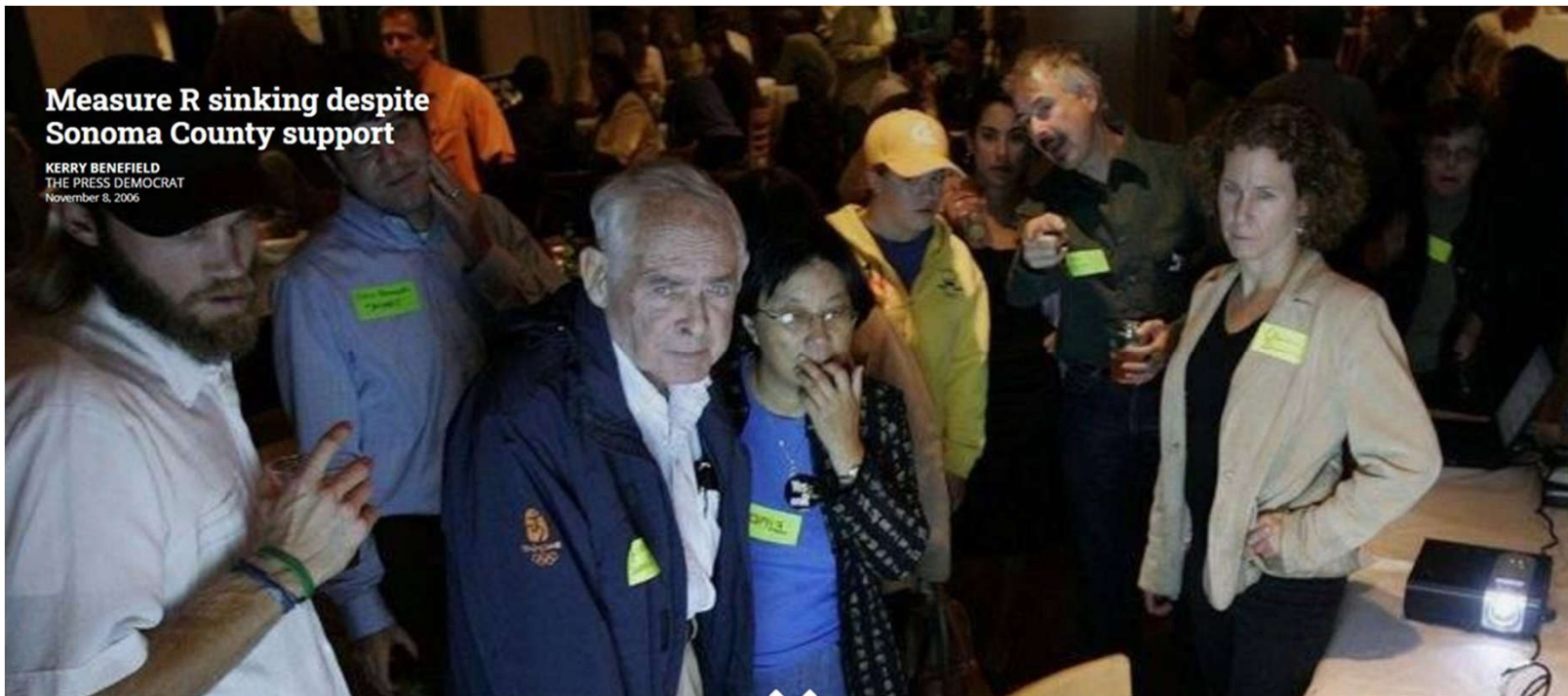
Celebrating 3 years

The SMART District Established in 2003

The SMART District was established by California State Assemblyman, Joe Nation in 2003 to evaluate, plan, and implement passenger rail and associated rail transit facilities and services from Cloverdale in Sonoma County to a ferry terminal in Marin County that connects to San Francisco.



Measure R



The SMART District placed a $\frac{1}{4}$ percent sales tax measure on the Ballot in 2006. The measure narrowly failed with 65.3% of the voters supporting the measure.

Measure Q



In 2006, the SMART District placed a second $\frac{1}{4}$ percent sales tax measure on the November ballot.

Voters Approve Measure Q

Measure Q Results

Marin County: 62.79% yes

Sonoma County: 73.7% yes

Total: 69.6% yes



November 2010

SMART Impacted by Economic Downturn

As a result of the economic downturn in 2009, the SMART Board of Directors made the hard decision to in November 2010 to construct the rail program in phases.

After leading the district's efforts to certify its Environmental Impact Report in 2005, and to successfully pass the ¼ percent sales tax measure in 2008, GM Lillian Hames decides to move on. Her tremendous work was the foundation for future success.



SMART's boss steps down

Press Democrat

January 21, 2011



SMART Finds its Next General Manager

Following Lillian Hames departure as SMART General Manager, the SMART Board of Directors entered into an agreement with the County of Marin to loan their Public Works Director Farhad Mansourian to SMART, and act as Interim GM as the agency searched for a permanent General Manager.





Celebrating 3 years

SMART Finds its Footing



Troubled SMART rail line taps Marin official as its leader

"Marin County public works chief Farhad Mansourian will take over as the general manager of the financially troubled Sonoma-Marín Area Rail Transit District after the rail board asked him to take the job."

*Marin Independent Journal
August 22, 2011*

SMART Finds its Footing



Editorial: Pay package for new SMART chief raises questions

“Still, he is a solid pick. He has a history of keeping projects on track. He has proven his skill as a builder of projects. That’s what SMART needs.”

*Marin Independent Journal
August 31, 2011*

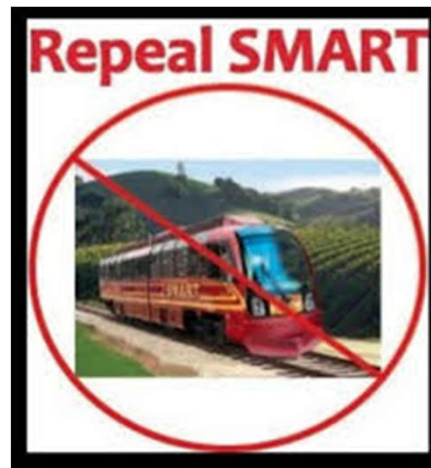
Repeal SMART



SMART train foes begin repeal petition drive

“Volunteers began a push Saturday to repeal funding for the Sonoma-Marín commuter rail project, gathering ballot petition signatures at shopping centers from Corte Madera to Santa Rosa.”

*Petaluma Argus Courier
October 2, 2011*



Repeal SMART



SMART repeal effort falls short

“Opponents of the Sonoma-Marín Area Rail Transit train apparently have failed in their attempt to force a repeal election on the sales tax that is the agency's major source of funding. Clay Mitchell of Windsor, co-chairman of Repeal SMART, said his group is submitting the signatures as a symbolic gesture. He acknowledged the almost-certain failure.”

*Press Democrat
January 27, 2012*



January 2012

Construction Bids Come in Below Estimates



"After a series of disappointing developments, SMART delivered some welcome news for a change on Thursday. The bids for the first phase of construction came in so far below estimates that SMART is prepared to add back two stations and 1 mile of service. This means that the truncated line will end at the north Santa Rosa station at Guerneville Road instead of at Railroad Square as first envisioned."

Breaking Ground on One of the Largest Infrastructure Projects in the North Bay



On February 12, 2012, SMART broke ground on one of the largest infrastructure projects in the history of the North Bay Area.

July 2012 – Demolishing the Old Track



September 2012 – Constructing the New Track





Celebrating 3 years

SMART Moves to Petaluma



SMART rail district opening Petaluma headquarters

"The Sonoma-Marin Area Rail Transit District will create a consolidated headquarters in Petaluma, moving workers there from Santa Rosa and San Rafael.

"We have a lot of staff constantly going back and forth. We are wasting a lot of time and talent and mileage," said SMART General Manager Farhad Mansourian."

*Press Democrat
June 22, 2012*

November 2013

Congressman Huffman Helps Build Our Railroad





Celebrating 3 years

SMART Adds Sonoma County Airport Station



SMART gets \$12.5 million to extend rail service to Airport Boulevard

“A key regional transportation committee on Wednesday approved \$12.5 million for Sonoma-Marín Area Rail Transit to rebuild the line as far north as Airport Boulevard and possibly add a new station there.”

*Press Democrat
January 2013*

Relocating a Chimaera Redwood Tree

On August 6, 2014, SMART relocated a Chimaera Redwood tree in Rohnert Park to make way for rail construction.



Bicycle-Pedestrian Pathway



SMART is dedicated to building a network of bicycle-pedestrian pathways since the beginning of the SMART project.



A map of built and future
pathway segments can be
found on SMART's webpage:
[SonomaMarinTrain.org/SMART Pathway](https://SonomaMarinTrain.org/SMART_Pathway)



November 2015 Track Construction Nears the Finish Line



In November 2015 track construction was nearing completion.

First SMART Trains Arrive in USA





Celebrating 3 years

SMART Trains on the Way to the North Bay

SMART's trains began
to arrive in 2015



Allen Robertson©
RailPictures.Net - Image Copyright Allen Robertson

Welcoming the First SMART Trains to the North Bay



On November 19, 2015 SMART held a public ceremony to welcome the first trainset to the North Bay



Celebrating 3 years



SMART Buys a (Draw) Bridge

Sonoma-Marin Area Rail Transit officials intend to buy a used draw bridge in Galveston, Texas, to replace the 99-year-old swing bridge over the Petaluma River.

Rather than launch a \$20 million rehab of the aging structure at Haystack Landing, and then perhaps spending \$30 million to replace it in 20 years, SMART says that for \$20 million it can buy and install the used bridge and have it last 75 to 80 years.

"I was looking for a different solution than retrofitting it," said Farhad Mansourian, SMART's general manager."

*Press Democrat
February 14, 2012*

Haystack Bridge Construction



Haystack Bridge Completion



October 2015

First Train Crossing Haystack Bridge



2016 – Teaching the Next Generation of Cyclists How to Cross Railroad Tracks





Celebrating 3 years

December 2016 – Smart's First Holiday Express Toy Drive



March 2016 – Track Completed





Celebrating 3 years

Grant Pays For Four Additional Train Cars



Marin commuter rail gets state grant for more cars

"A state agency has granted Sonoma-Marín Area Rail Transit \$11 million to buy four more cars as the service gets ready to begin later this year.

The California Transportation Commission approved the grant last week, a move that allows the rail agency to expand the service as the system grows."

*Marin Independent Journal
March 21, 2016*



Celebrating 3 years

Engine Flaws Cause Delay



Engine Flaws, Crossing Signal Problems Delay Launch Of North Bay SMART Train

“Commuter train service between Santa Rosa and San Rafael has been delayed from late this year to at least spring 2017, the Sonoma-Marin Area Rail Transit District said Friday.

An underlying design flaw in the crankshaft of the diesel engine that will operate the SMART train cars is one reason for the delay, SMART district’s General Manager Farhad Mansourian said.”

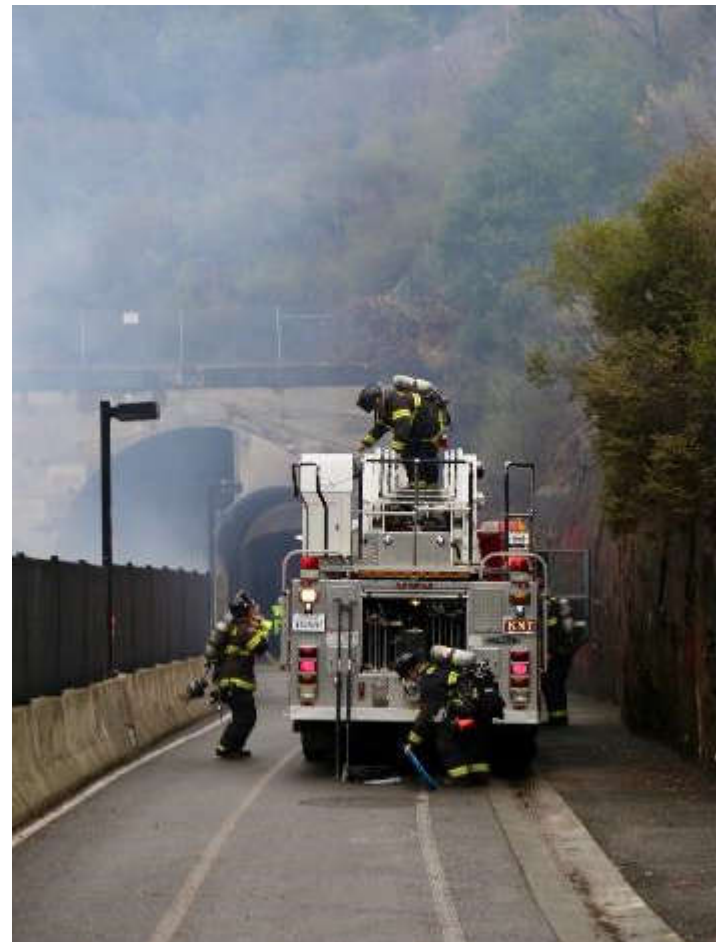
*KPIX Channel 5 TV
October 2016*

April 2017 – Training Exercise

In preparation for emergency response to any and all potential incidents, SMART works closely with local jurisdictions to train and prepare for emergencies.



December 2019 – Training Exercise





Celebrating 3 years

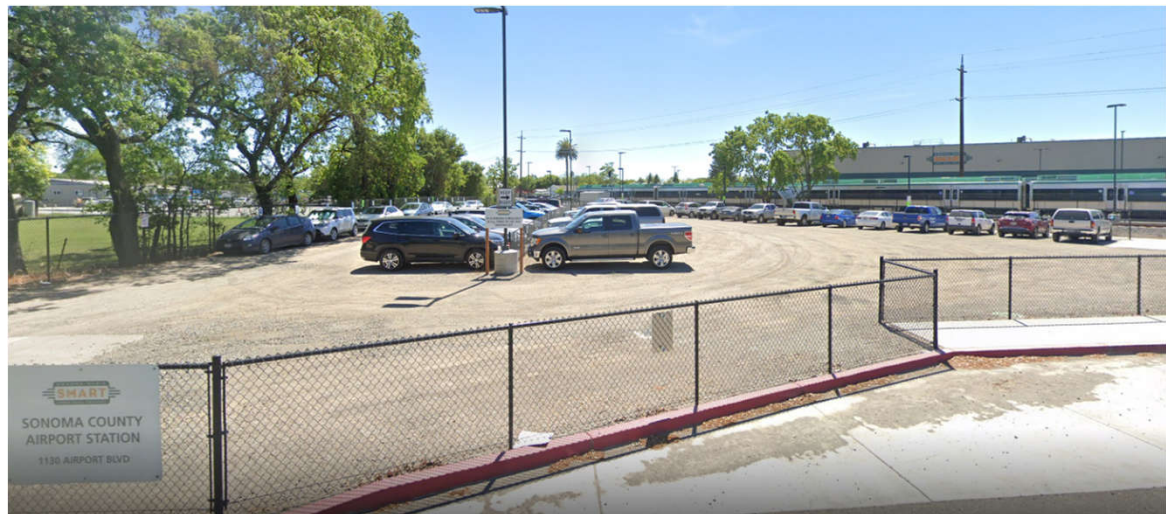
Summer 2017 – There's a Train Coming to Town



Summer 2017 – Smart Opens New Parking Lots

SMART parking lots are located at:

- Sonoma County Airport Station
- Rohnert Park Station
- Petaluma Downtown Station
- Novato San Marin Station
- Novato Hamilton Station
- Larkspur Station



Summer 2017 – Preview Rides



SMART provided free train rides during the summer of 2017 to offer North Bay residents an opportunity to experience firsthand the potential of passenger rail transportation.

August 25, 2017 – Smart Opens for Service



Smart Celebrates its First Day of Operations



Cutting the Ribbon



August 25, 2017, SMART celebrated the official start up of the first passenger rail service in 50 years.

Kids Love Smart



October 8, 2017 – Tubbs Fire



October 8, 2017 – Tubbs Fire



On October 9, SMART resumed free emergency service to assist in the evacuation of Santa Rosa residents. SMART continued to offer free service through October 20. SMART also launched two programs designed to help individuals and businesses impacted by the Sonoma County fires – the Individual Relief Pass Program and the Business Relief Pass Program.

December 2017 – Smart Holiday Express





Celebrating 3 years

August 18, 2018 – SMART Fest

SMART FEST
a North Bay community celebration
August 18, 2018
10 a.m. to 3 p.m.
SMART Novato Hamilton Station
Celebrate SMART's first year of service
Live Music • Food Trucks • Local Beer & Wine
North Bay Vendors • SMART Giveaways • Family Fun



FREE TRAIN SERVICE AUGUST 18 & 19



December 2018 – Smart Holiday Express



January 2019 – One Million Riders



March 2019 – 100,000 Bicyclists



June 2017 – Larkspur Extension



In June 2017, SMART awarded the contract to construct the rail extension to Larkspur.

June 2018 – Dedicating San Rafael Pathway



June 2018 – Dedicating Novato Pathway



June 2019 – Building 2nd Street Crossing in San Rafael



August 2019 Larkspur Extension Systems Testing



SMART to begin overnight testing on Larkspur extension

“SMART trains will be blowing horns overnight between San Rafael and Larkspur this weekend as testing of the new rail line extension begins.

Testing, which is expected to last two to three weeks.”

Marin Independent Journal

August 22, 2019



Celebrating 3 years

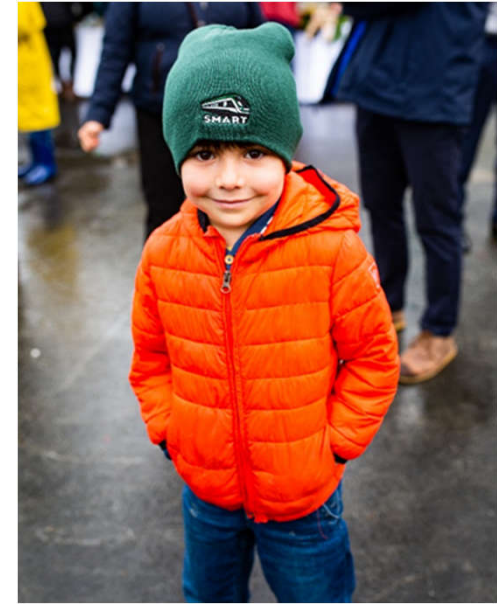
December 13, 2019 Larkspur Extension Grand Opening





Celebrating 3 years

December 13, 2019 Larkspur Extension Grand Opening



December 14, 2019

Novato Downtown Station Grand Opening



December 2019
SMART's Fourth Holiday Express!

2019
SMART
HOLIDAY
EXPRESS
TOY DRIVE



March 3, 2020 – Measure I

In Measure I tax renewal, SMART train faces critical test with voters

*Press Democrat
February 15, 2020*

Editorial: SMART train tax – IJ recommends no vote on Measure I

*Marin IJ Editorial Board
February 1, 2020*

*PD Editorial: Yes on Measure I:
Don't derail the SMART train*

*Press Democrat, North Bay Business
Journal
February 2, 2020*





Celebrating 3 years

March 3, 2020 – Measure I

*Editorial: Vote yes on Measure I to
keep Marin's SMART trains rolling*

*SF Chronicle Editorial Board
February 4, 2020*

*Yes on Measure I: San Francisco
North Bay needs an alternative to
the automobile*

*Brad Bollinger, Editorial Board
February 14, 2020*



Celebrating 3 years

March 3, 2020 – Measure I



Sonoma, Marin county voters reject SMART sales tax extension

“Voters dealt a punishing blow to the North Bay’s 2½-year-old commuter rail system Tuesday, rejecting an early renewal of the sales tax that funds SMART following a bitter battle that set new records for campaign spending.”

*Press Democrat
March 3, 2020*

Spring/Summer 2020 – Coronavirus

SMART cuts service as ridership declines due to coronavirus pandemic

*The Press Democrat
April 4, 2020*

SMART slashes service as ridership plunges amid COVID-19 pandemic

KTVU FOX 2

SMART Cuts More Trips Amid 90% Drop In Ridership: Coronavirus

THE PATCH, APRIL 23, 2020

COVID-19 – SMART Response

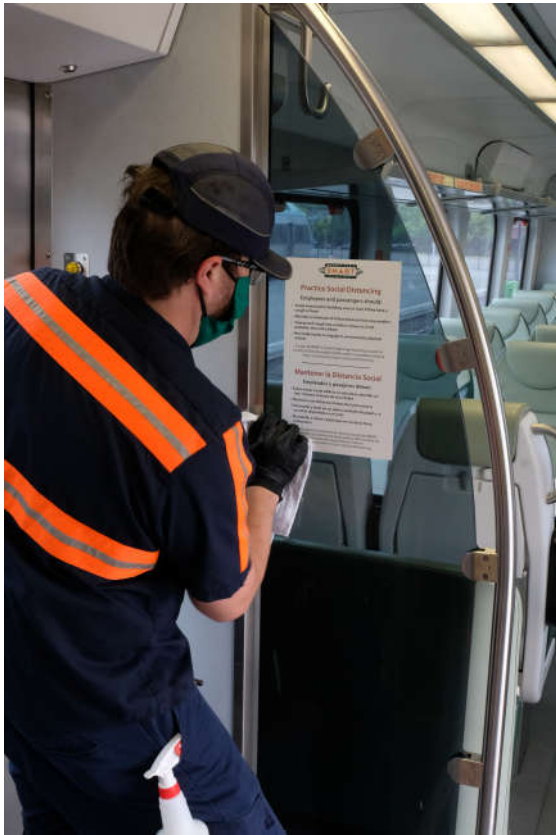


#StayingApartKeepsUsMoving

On March 17, the Sonoma County Public Health Officer issued an order to shelter in place in response to the Coronavirus pandemic.

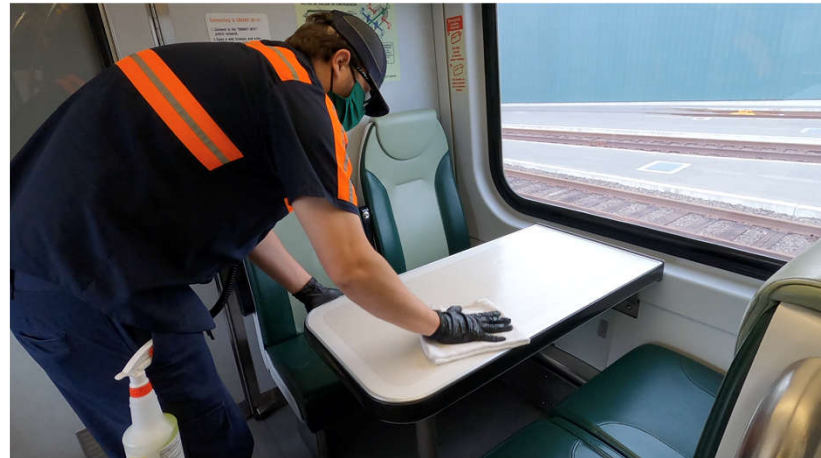
SMART rose to the occasion by implementing thorough cleaning and social distancing protocols in accordance with the Center for Disease Control guidelines.

COVID-19 – SMART Response



Trains are cleaned 2X daily by SMART staff, utilizing:

- Hand applied disinfectants
- Electrostatic sprayer



COVID-19 – SMART Response



SMART's Vehicle Maintenance Team
cleans each train twice a day

COVID-19 – SMART Response

Smart Board of Directors Meet on Zoom



COVID-19 – Meet Our Employees



Meet Antonio.

Engineer and Conductor

He's an artist and world traveler from Atlanta.

He wears a facial covering everyday. When you wear yours on the train, you help protect essential workers like Antonio.

#StayingApartKeepsUsMoving



Meet Edgar.

Operations Laborer

He's a husband and a father, who loves to play the guitar.

When you wear a facial covering, you help protect the people who disinfect your train twice a day. Edgar and all SMART staff thank you.

#StayingApartKeepsUsMoving

COVID-19 – Meet Our Employees



Meet Shawn.

Signal Technician

He's a father of two, who was born and raised in Cloverdale.

Shawn works hard to ensure trains travel safely through our community. When you wear a facial covering, you help protect people like Shawn and his family.



#StayingApartKeepsUsMoving

Meet Nina.

Admin. Services Manager
at the Rail Operations Center

She's a wife and a mother, who loves gardening.

She works hard to keep SMART rolling. When she comes to work, she wears a facial covering. Please do the same when you ride transit.



#StayingApartKeepsUsMoving

COVID-19 – Meet Our Employees

Meet Steven.

Engineer/Conductor

He's a classic car enthusiast and comes from a family of rail operators.

Steven wears a facial covering to help create a clean, healthy environment for SMART riders. Please join Steven in wearing a facial covering on the train.



#StayingApartKeepsUsMoving

Meet Jag.

Vehicle Maintenance Technician

He has two grown children whom he loves dearly.

Jag makes sure our trains are a reliable way to travel. When you practice social distancing, you are protecting essential workers like Jag.



#StayingApartKeepsUsMoving



Celebrating 3 years

Windsor Extension

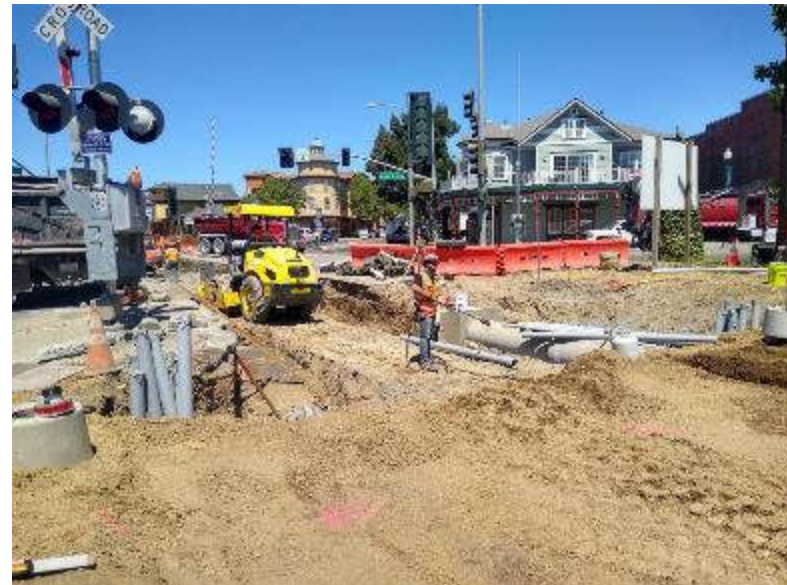


Windsor Extension



SMART started up in December 2019, and the grand opening of the Windsor Station is expected in 2022

Windsor Extension





Celebrating 3 years

The SMART train is a green commute option for Marin and Sonoma, with connections to San Francisco via the Larkspur Ferry. SMART is continuing to serve our community and creating connections to jobs, education centers, retail hubs and housing along the Sonoma-Marín corridor.

SMART proudly provides a reliable and efficient transportation service for the North Bay and continues to complete the vision of a 70-mile transit system. The Windsor Extension project is on track to bring passenger service to the Town of Windsor in 2021.

Happy Anniversary SMART!