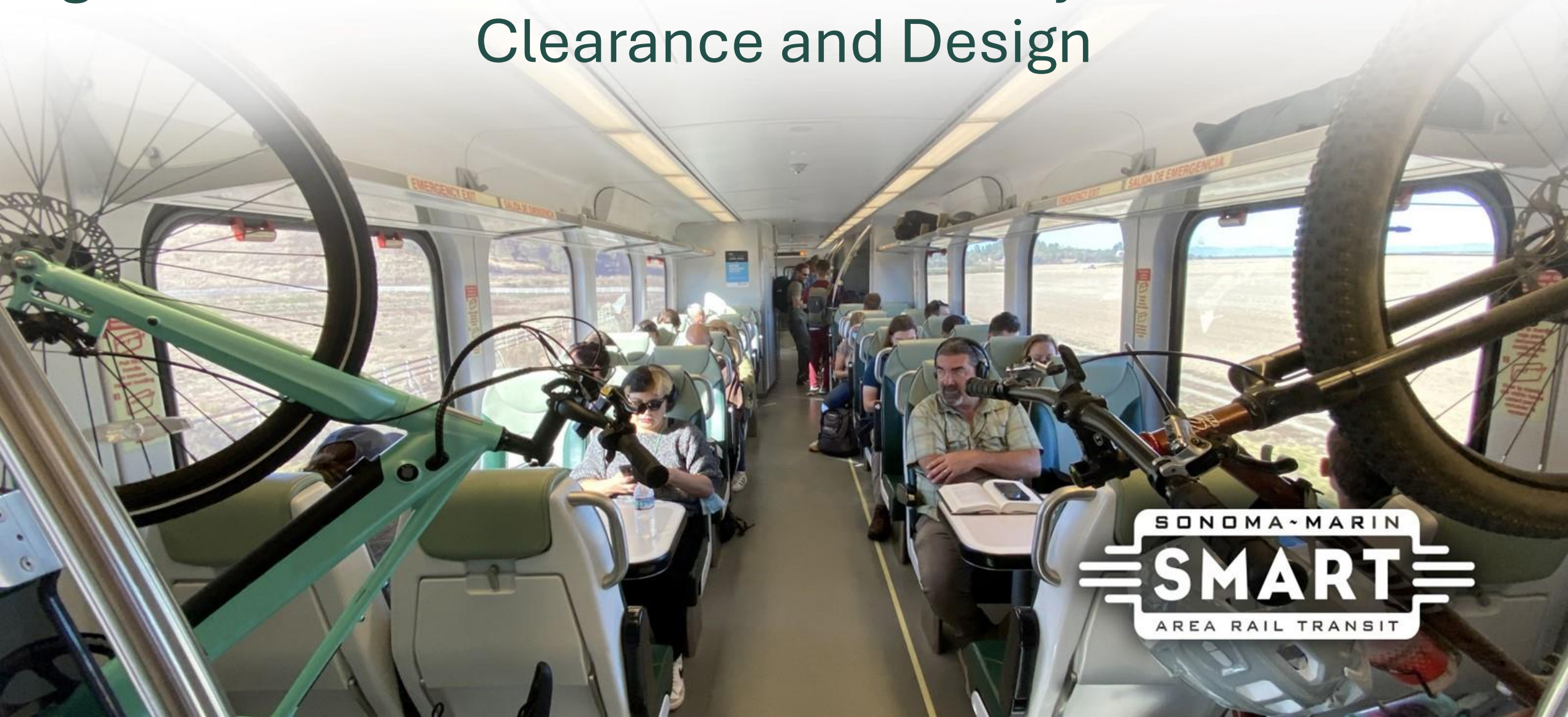


# SMART Board of Directors Meeting

## Agenda Item 7: Puerto Suello Pathway – Environmental Clearance and Design





# Puerto Suello Pathway

**Recommendation:** Award Contract No. CV-PS-24-003 Design and Permitting for the Puerto Suello Non-Motorized Pathway



# Pathway Feasibility Study

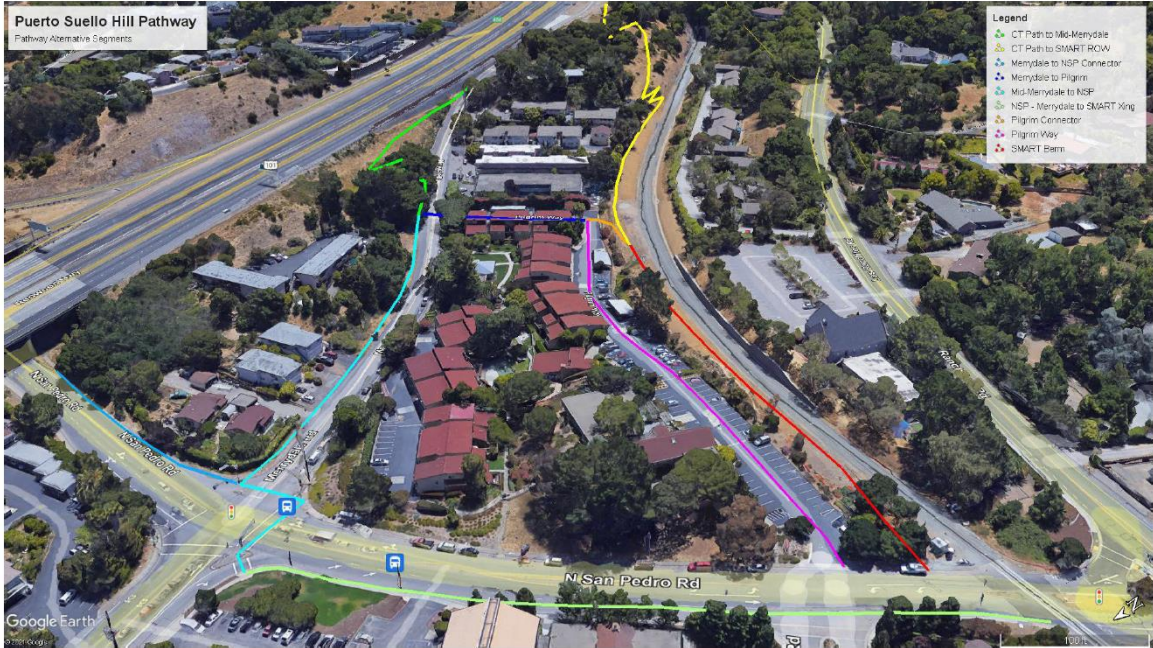


**SONOMA-MARIN AREA RAIL TRANSIT**



**CITY OF SAN RAFAEL**

**PUERTO SUELLO HILL PATHWAY FEASIBILITY STUDY**





# Pathway Feasibility Study

**Desire:** Connect the existing pathway at the top of the Puerto Suello Hill to the existing SMART Pathway at North San Pedro Road

**Challenges:** Steep Topography

## **Goals:**

- Compliant with Americans with Disabilities Act (ADA) – 5% Grade
- Provide Pedestrian and Bicycle Dual-Use Facilities
- Meet Caltrans Design Guidelines for a Two-Way Class 1 Bikeway
- Stay with Public rights-of-ways
- Minimize Parking and Roadway impacts/modifications
- Minimize utility impacts/relocations

# Orientation



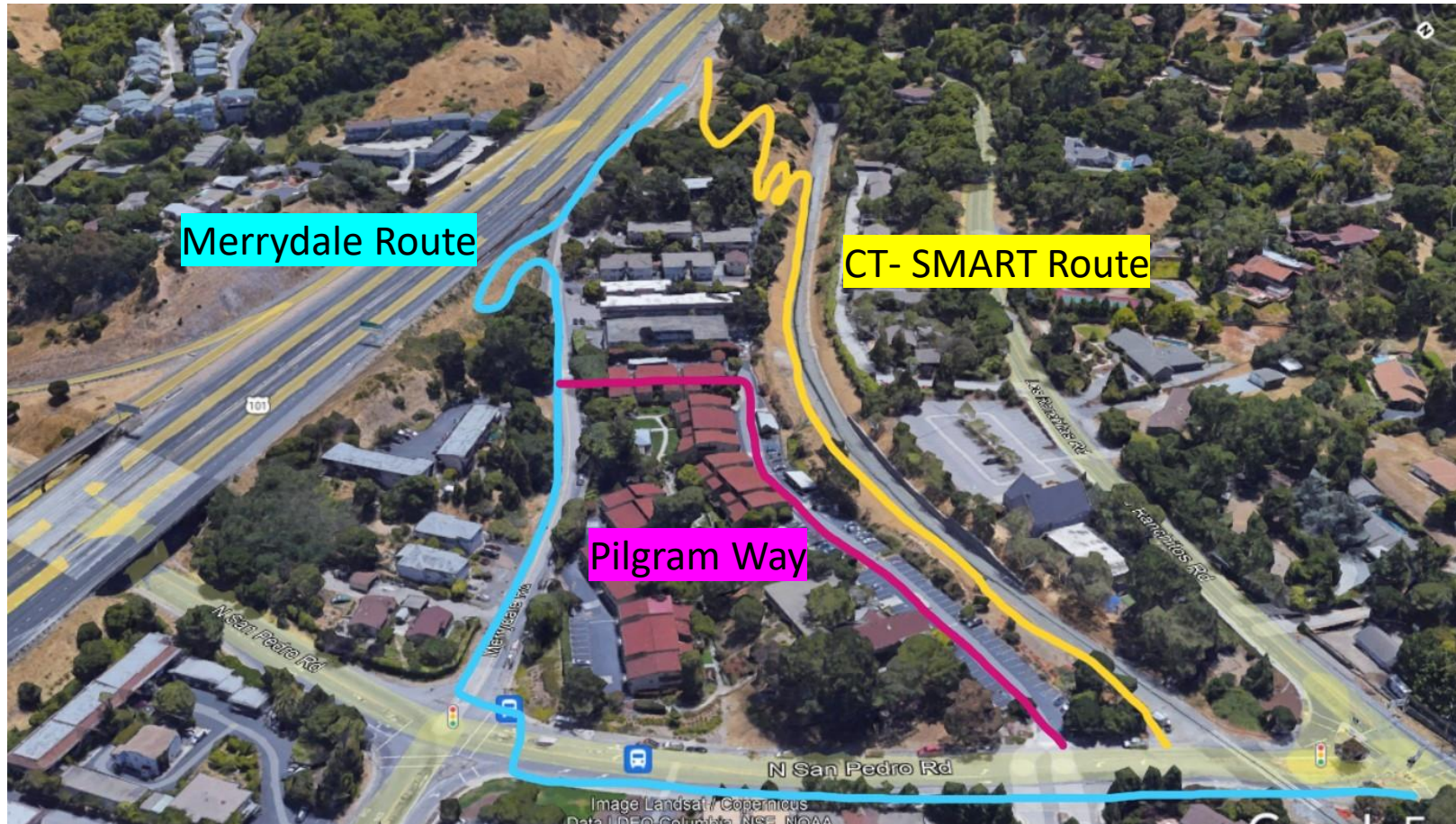


# Study Area





# Potential Routes





# Caltrans-SMART Route





# Caltrans-SMART Route





# Caltrans-SMART Route



Rendering of potential pathway alignment.



# Caltrans-SMART Route



Pathway would connect to San Pedro Road via the SMART right-of-way.



# Design and Environmental Contract

## Summary:

**Scope:** Environmental review and prepare preliminary engineering

**Process:** Competitive Procurement: two proposals

**Action:** Approve Resolution No. 2025-02 authorizing the General Manager to Execute Contract No. CV-PS-24-003 with BKF Engineers in an amount of \$540,665.62 with the term through February 28, 2026

# Questions?





[www.sonomamarintrain.org](http://www.sonomamarintrain.org)



Customer Service:

[CustomerService@sonomamarintrain.org](mailto:CustomerService@sonomamarintrain.org)

(707) 794-3330