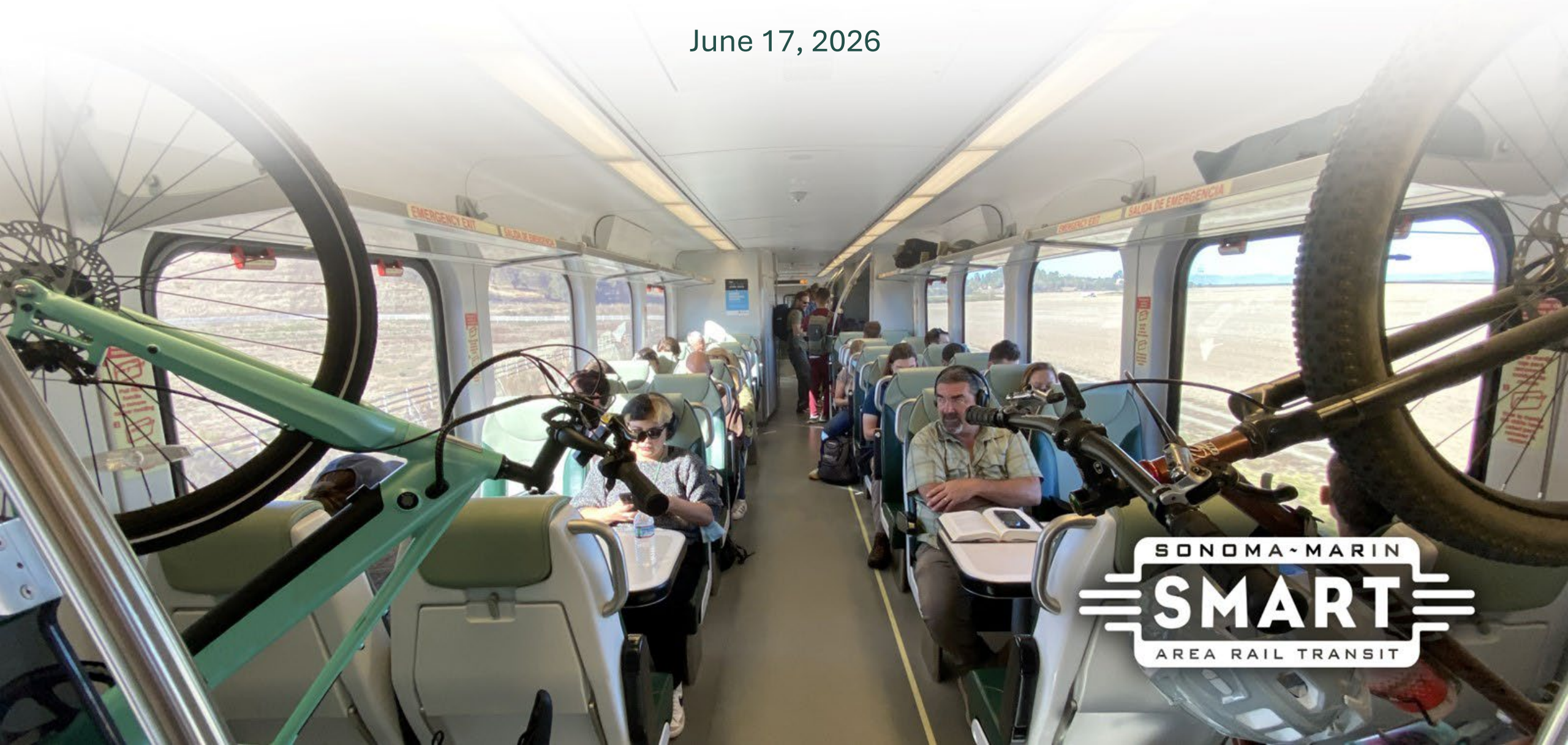


# Sonoma-Marin Area Rail Transit District

## Final Quality of Life Study

June 17, 2026



---

# Overview

SMART secured grant funding in 2023/2024 to complete a Quality of Life & Economic Impact Study. The purpose of the study was to examine how SMART's rail and pathway construction and operation influence quality of life in terms of:

-  **mobility**
-  **economics**
-  **land use**
-  **environment**

-  **public health**
-  **safety**
-  **access to opportunity**
-  **equity**

# Study Process

## Research

- **Outreach**
- **Methodology Development**

## Analysis

- **Indicator Assessments**
- **Outreach**
- **Theme Summaries**

## Results

- **Final Study**



Blue  
Ribbon  
Panel



Community  
Stakeholders



Technical Advisory  
Committee and  
SMART Board



Rider  
Testimonials

---

# Final Study Themes

**Even if you  
don't ride  
SMART you  
still benefit**

**SMART:  
Better than  
driving?**

**SMART links  
opportunity  
and  
community**

**SMART brings  
local benefits  
to local  
people**

**SMART fuels  
the North Bay  
economy**

**SMART keeps  
the North Bay  
moving in  
healthy and  
sustainable  
ways**

---

# Even if you don't ride SMART you still benefit

If you lined up all the cars SMART takes off the road in a year, those cars would span the distance between San Francisco and New York City. Even if you aren't using SMART for your trip you benefit from fewer vehicles on the road.



SAN FRANCISCO



2,600 MILES



NEW YORK CITY

---

# SMART: Better than driving?

- SMART is reliable and has an on-time performance of 95%.
- Especially compared to the highway, where average delay ranges from 10-20 minutes.
- Compared to driving, transit is 10 times safer when it comes to fatal crashes



**10X**  
SAFER THAN DRIVING

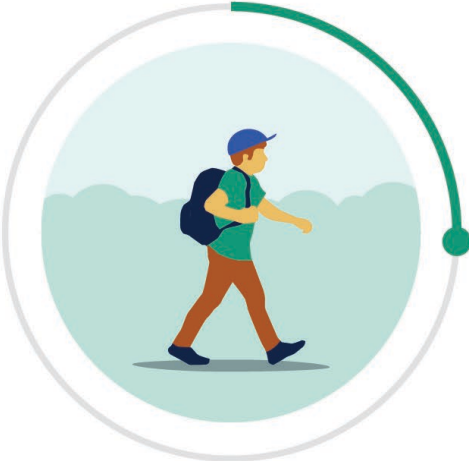
# SMART links opportunity and community

SMART is serving the transportation needs of diverse riders, including people with disabilities, students and youth, and people without vehicle access.



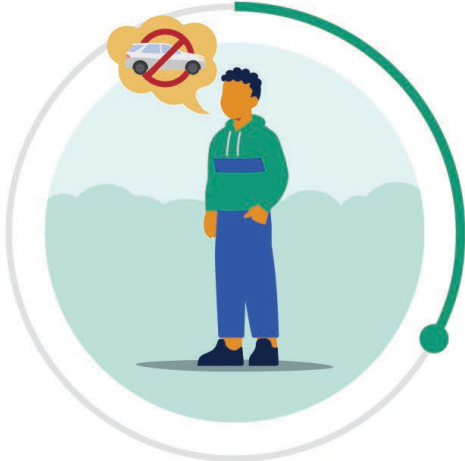
**5%**

WITH A DISABILITY



**26%**

WHO ARE UNDER 25

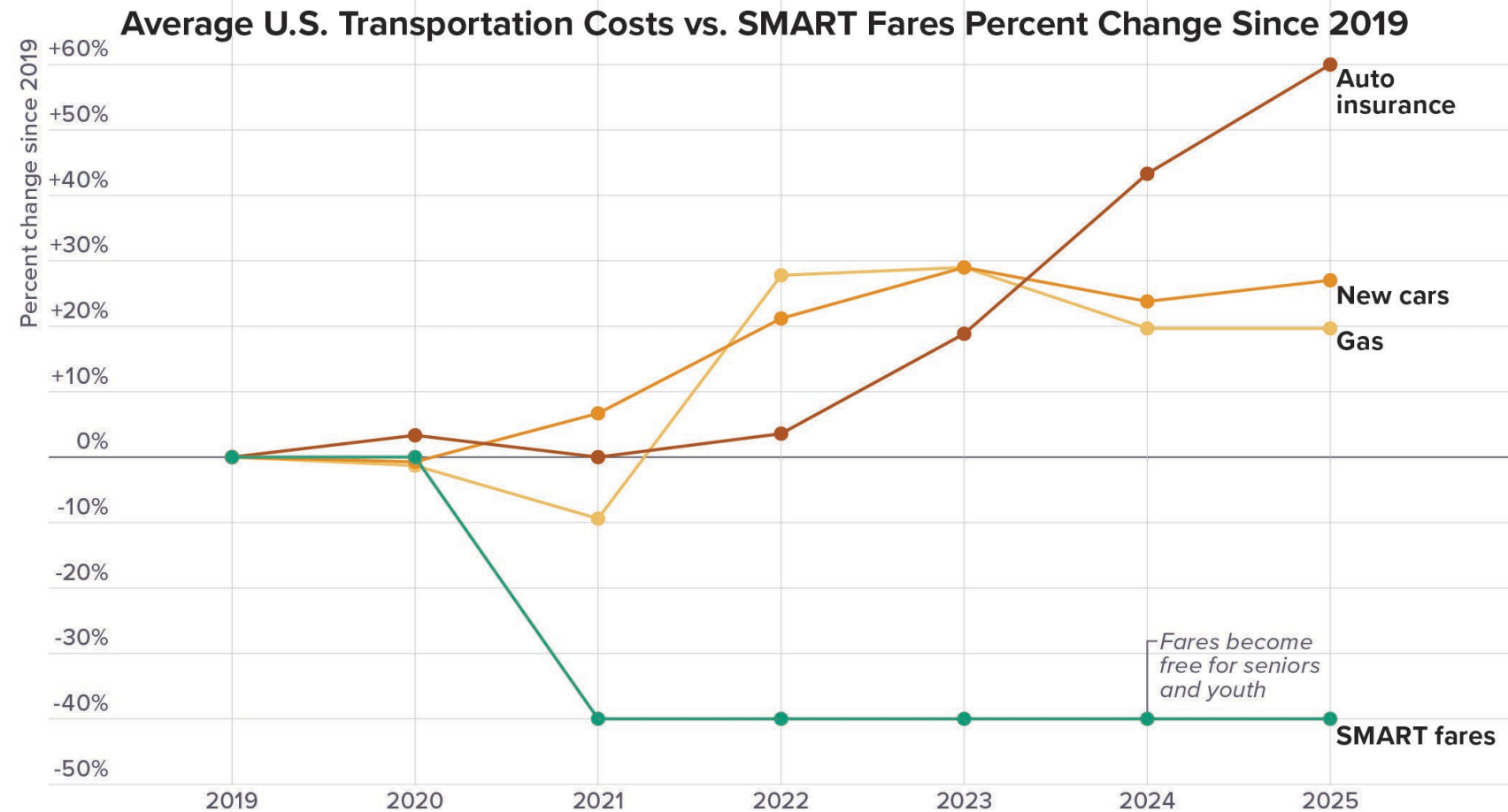


**33%**

WITHOUT CAR ACCESS

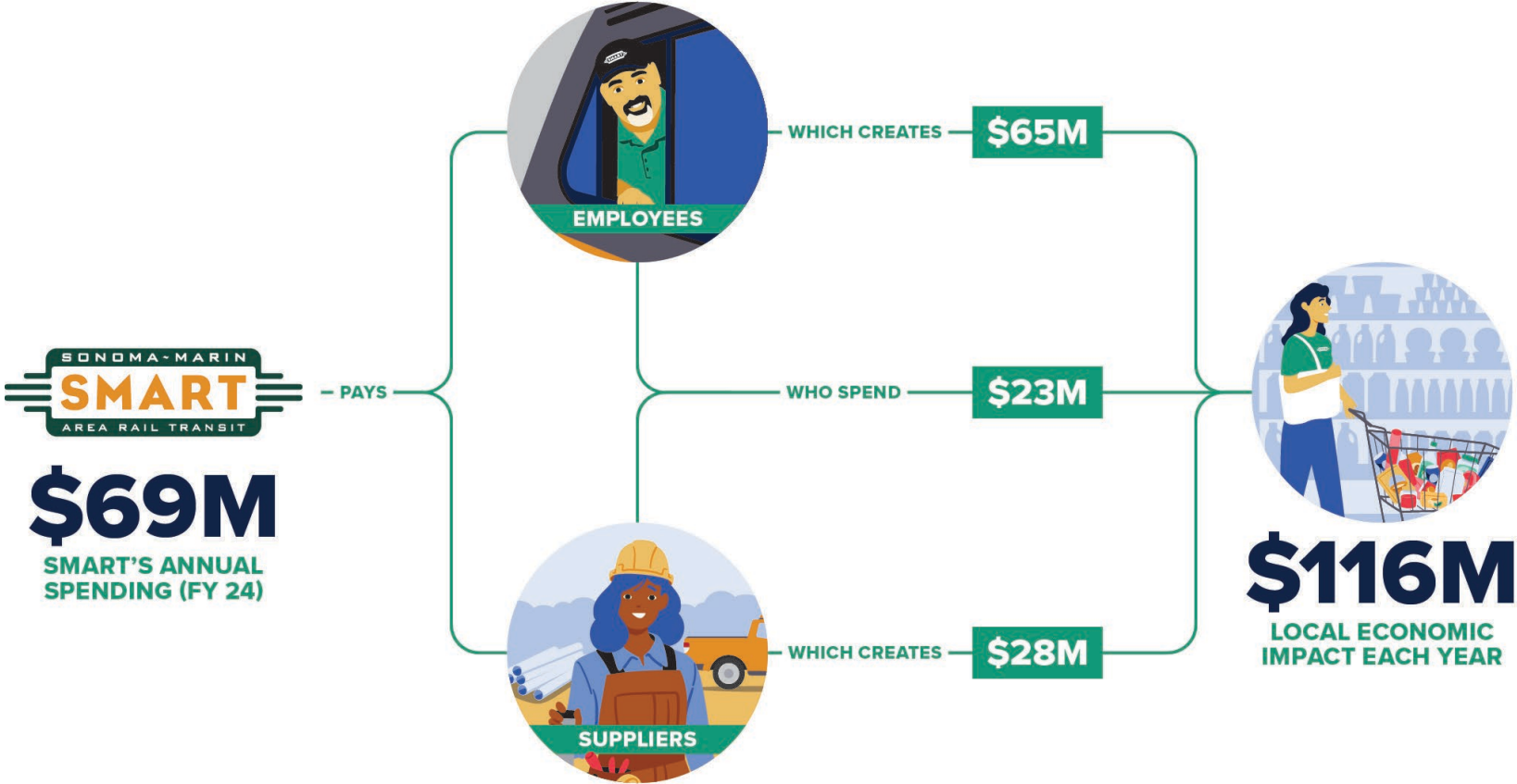
# SMART brings local benefits to local people

In 2021, SMART reduced its fares and has kept them low while the price of gas, vehicles and insurance have all increased. SMART offers an affordable alternative in an increasingly unaffordable region.



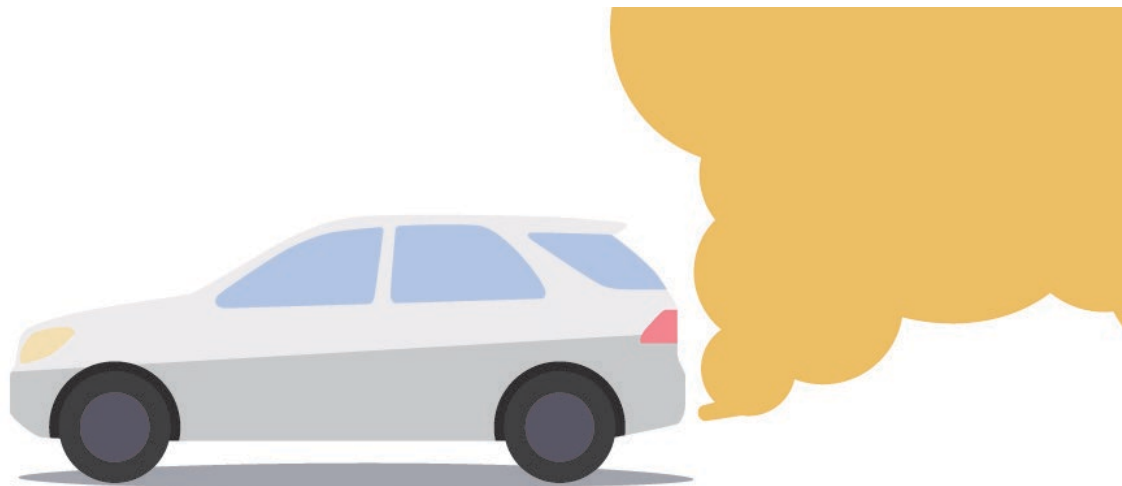
# SMART fuels the North Bay economy

- SMART's annual spending cycles through the local economy, creating an economic impact nearly double that of the agency's expenditures.
- SMART has seeded investment locally by securing over \$700M in grants.



---

# SMART keeps the North Bay moving in healthy and sustainable ways



# 36%

LESS POLLUTION PER  
TRIP THAN DRIVING

- Drivers reduce their trip greenhouse gas emissions by 36% when taking SMART compared to driving.
- The pathway facilitates active travel that contributes to improved health outcomes.
- SMART support local and regional efforts to reduce vehicle miles traveled and support more sustainable travel.

# SMART supports a cascade of benefits

✓ Voters approve 1/4-cent sales tax

✓ SMART secures matching grants

✓ SMART invests in system

✓ More communities served by SMART trains and pathway

★ **More access to destinations**

- More people and opportunities drawn to station areas
- More economic activity
- More thriving communities

★ **Fewer cars on the road**

- Less traffic congestion
- Fewer pollutants and greenhouse gas emissions
- Avoided environmental damage

★ **Less personal money spent on transportation**

- More money available for other needs
- More opportunity to thrive in the North Bay

★ **Safer facilities for biking and walking**

- More trips made by walking and biking
- More exercise
- Improved health

★ **More SMART jobs**

- More local jobs
- More money reinvested in the local economy
- More thriving communities



---

# Conclusion

For more, see the final SMART Quality of Life Study

---

# Questions?