

Board of Directors Meeting: June 16, 2021 – Public Comments

Date	Name	5. Public Comment on Non-Agenda Items
6/15/2021	Mike Arnold	See attachment
Date	Name	6. Consent a. Accept Monthly Ridership Report – May 2021
		None
Date	Name	7. Authorize the General Manager to Execute Six (6) Contract Amendment totaling \$586,800 as needed for Fiscal Year 2021-22
		None
Date	Name	8. Authorize the General Manager to Award Contract No. OP-PS-21-003 to Samuel R. Whitehead, Jr. dba Precision Wireless Service for SMART Land Mobile Radio maintenance, technical support, and consultation for an initial term of three years with a total not-to-exceed amount of \$120,000
		None
Date	Name	9. Authorize the General Manager to Award Contract No. FN-PS-21-001 to MuniServices, LLC to provide sales and use tax auditing and forecasting services for an amount of \$143,322 for three years
		None

To: David Rabbit, SMART Chair and SMART Board Members;
Heather McKillop
From: Mike Arnold
Subject: Transit Performance in the US and the SF Bay Area from the
NTD – **Agenda Item 5**
Date: June 16, 2021

The National Transit Database (NTD) publishes transit ridership about five weeks after the end of each month for every transit agency in the nation, including SMART. Data are published by mode within transit agencies providing multiple services (e.g., MUNI).

I have created numerous comparisons for national and Bay Area transit agencies in the attached graphs. These will be updated monthly as NTD data is released to inform Board members on SMART's performance and how it compares with other agencies. As annual operating expense data is released, additional comparisons will be added.

This will be particularly important in assessing the impacts post-pandemic of hybrid work schedules on transit ridership. These graphs are also available online at www.Transdef.Org.

Data from the National Transit Database

Glossary:

VRH = vehicle revenue hours

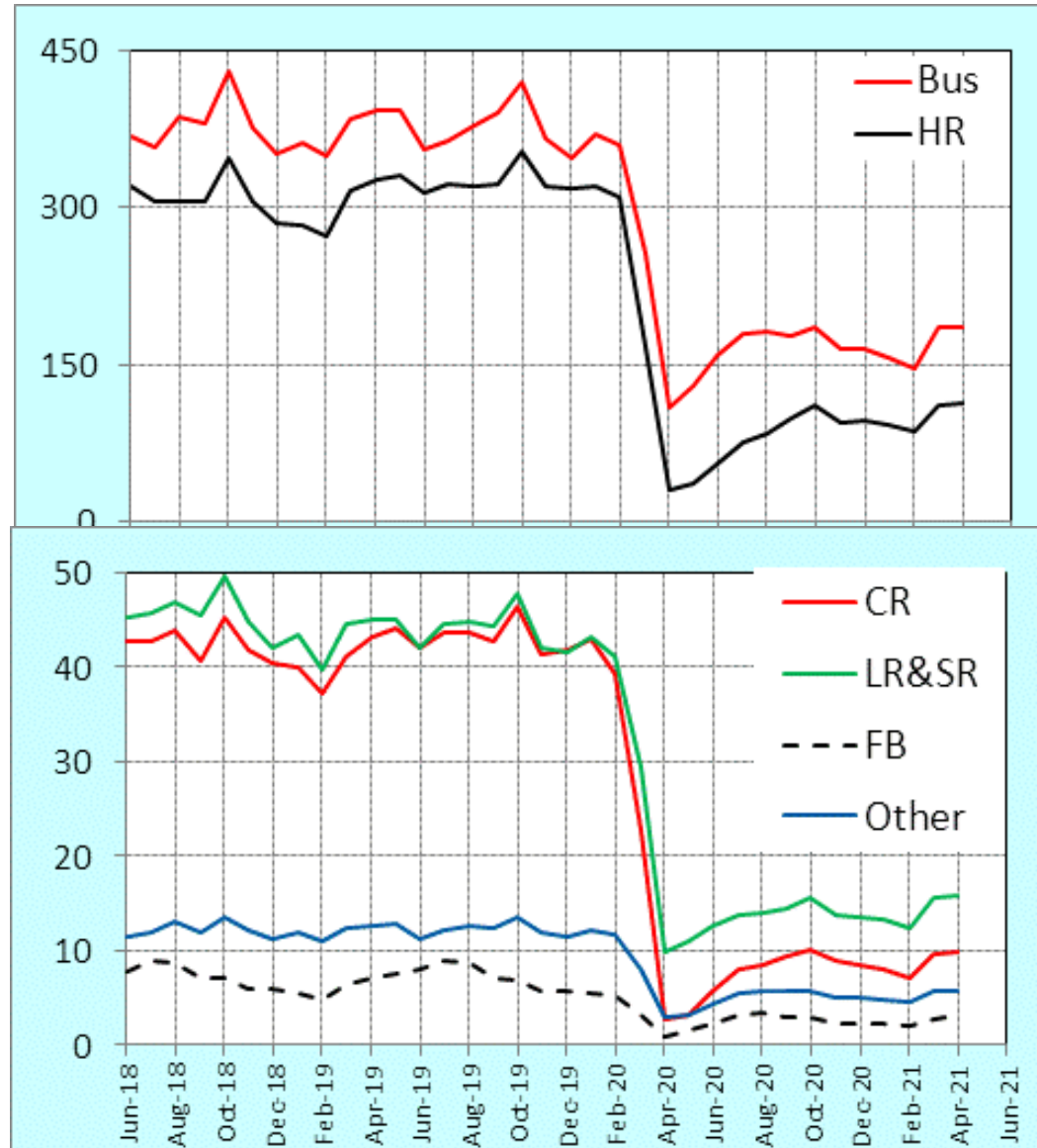
VRM = vehicle revenue miles

Transit Mode Definitions:

Code	Mode	Code	Mode
CB	Commuter bus	MB	Bus
CR	Commuter rail	RB	Bus Rapid Transit
DR	Demand response	SR	Street Car
FB	Ferry	TB	Trolley Bus
HR	Heavy rail	VP	Van Pool
LR	Light rail	YR	Hybrid Rail

National Monthly Transit Ridership by Mode

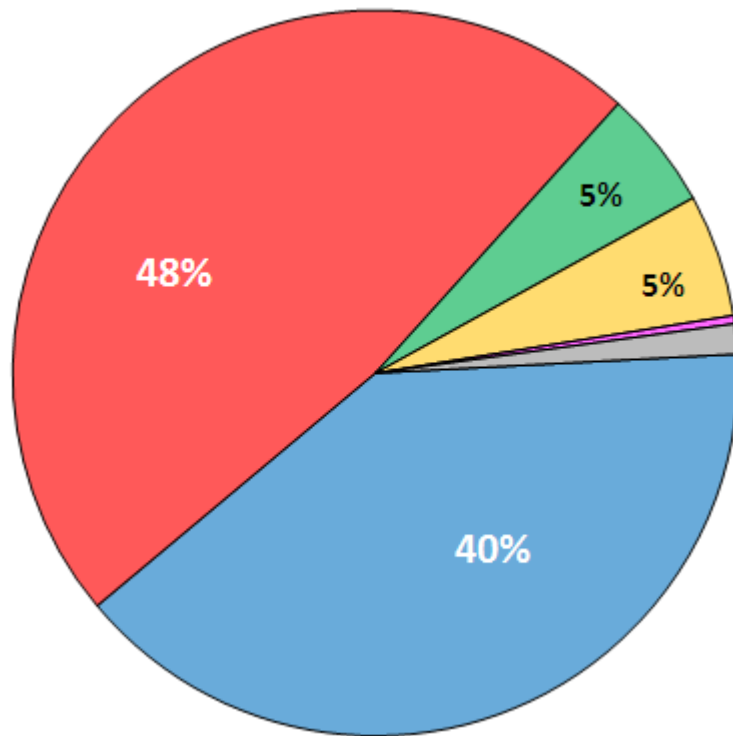
Millions of
Riders per
Month



Note: Different Scale

National – Shares of Transit Riders by Mode

Average 2019

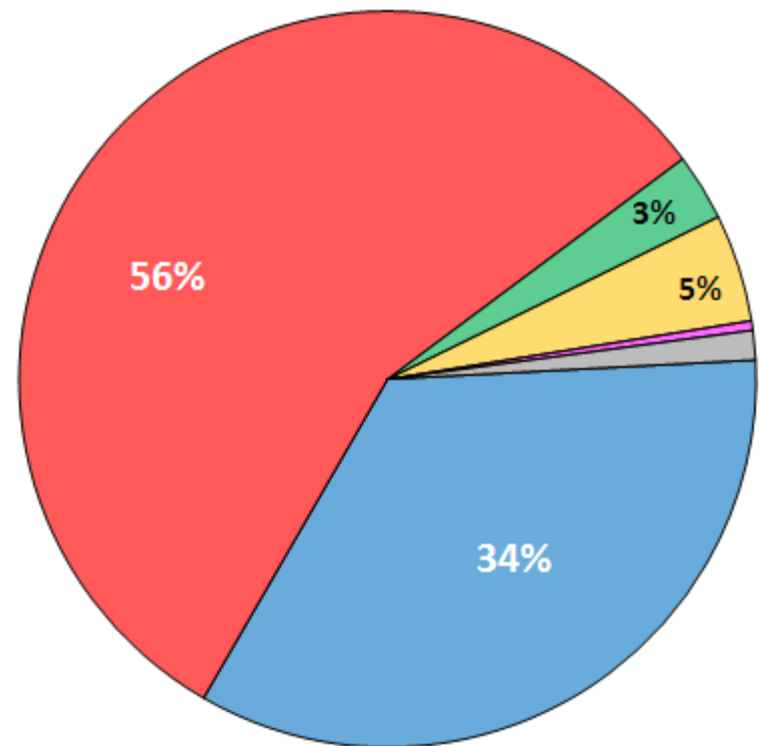


■ Heavy Rail

■ Commuter Rail

■ Vanpools

April 2021



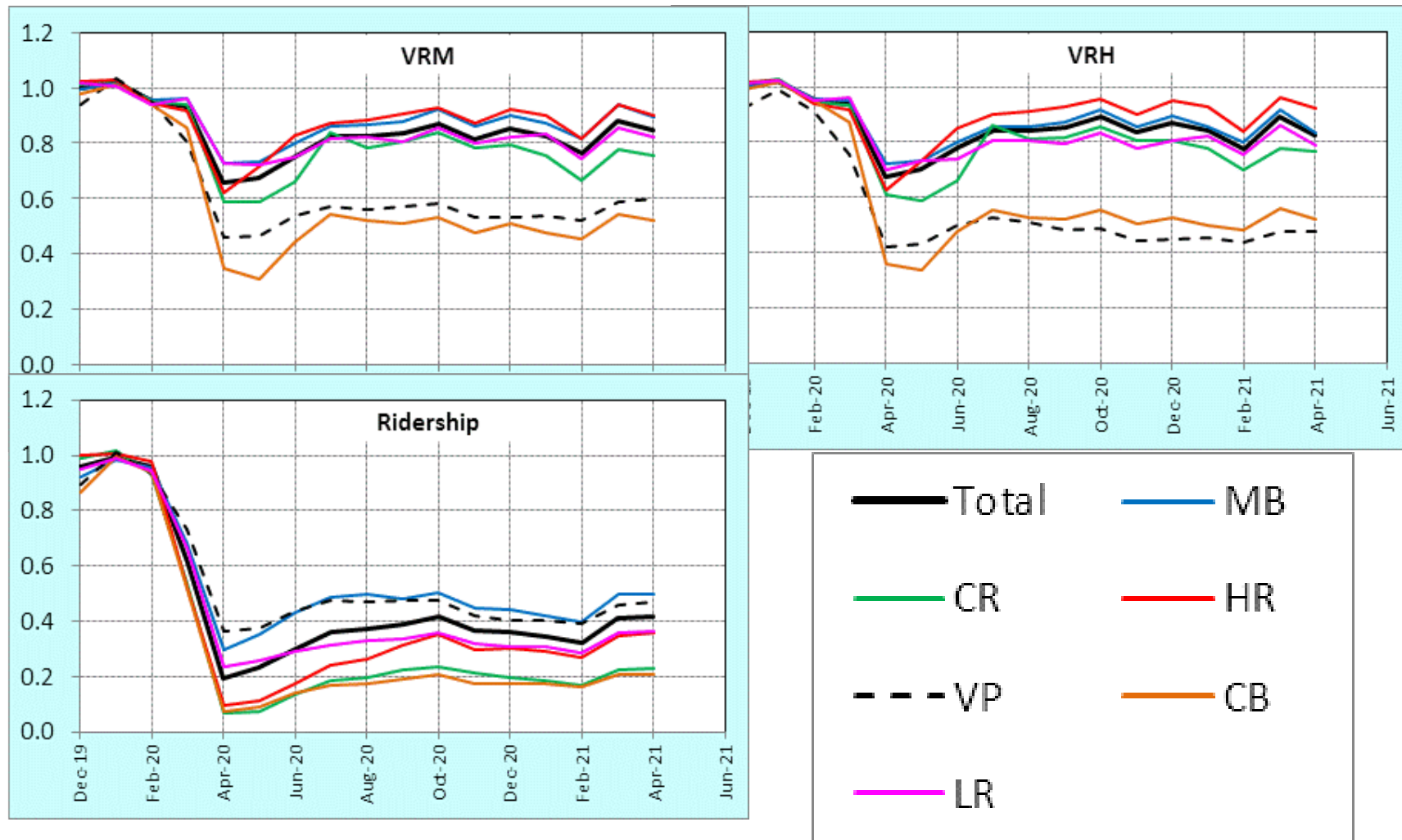
■ Buses

■ Light Rail and Street Cars

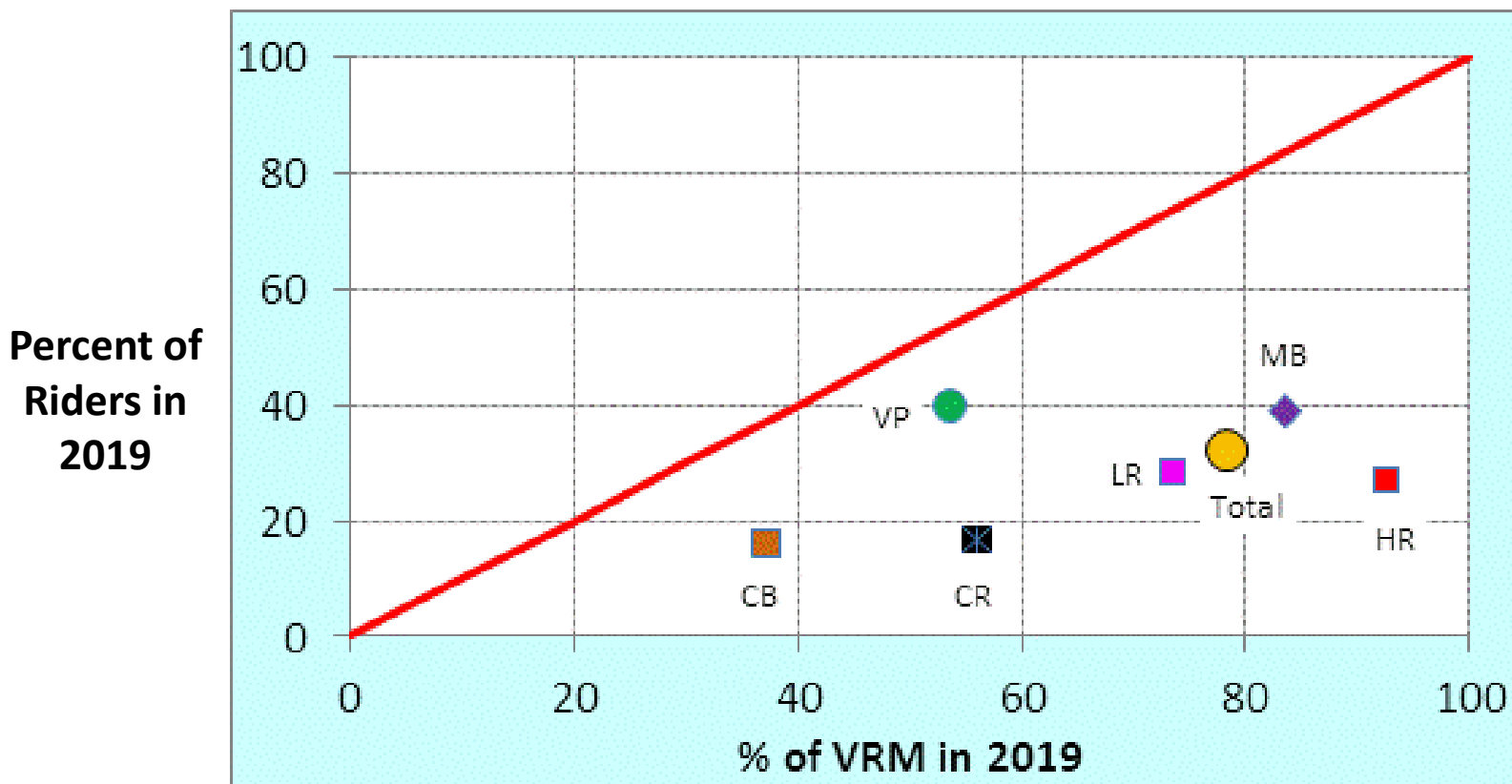
■ Other

National – Performance Measures Relative to 2019 Levels

Ratio
to Avg
2019
Levels



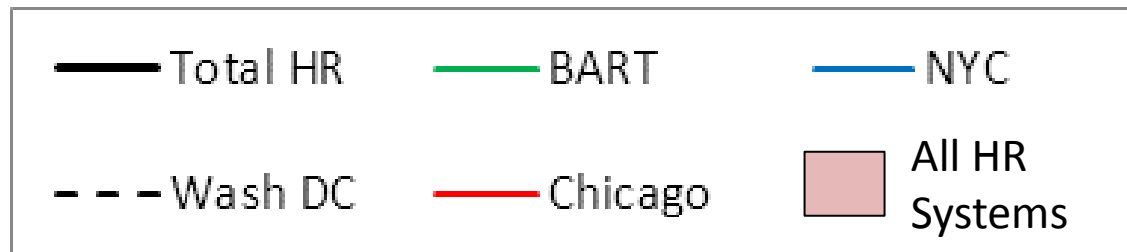
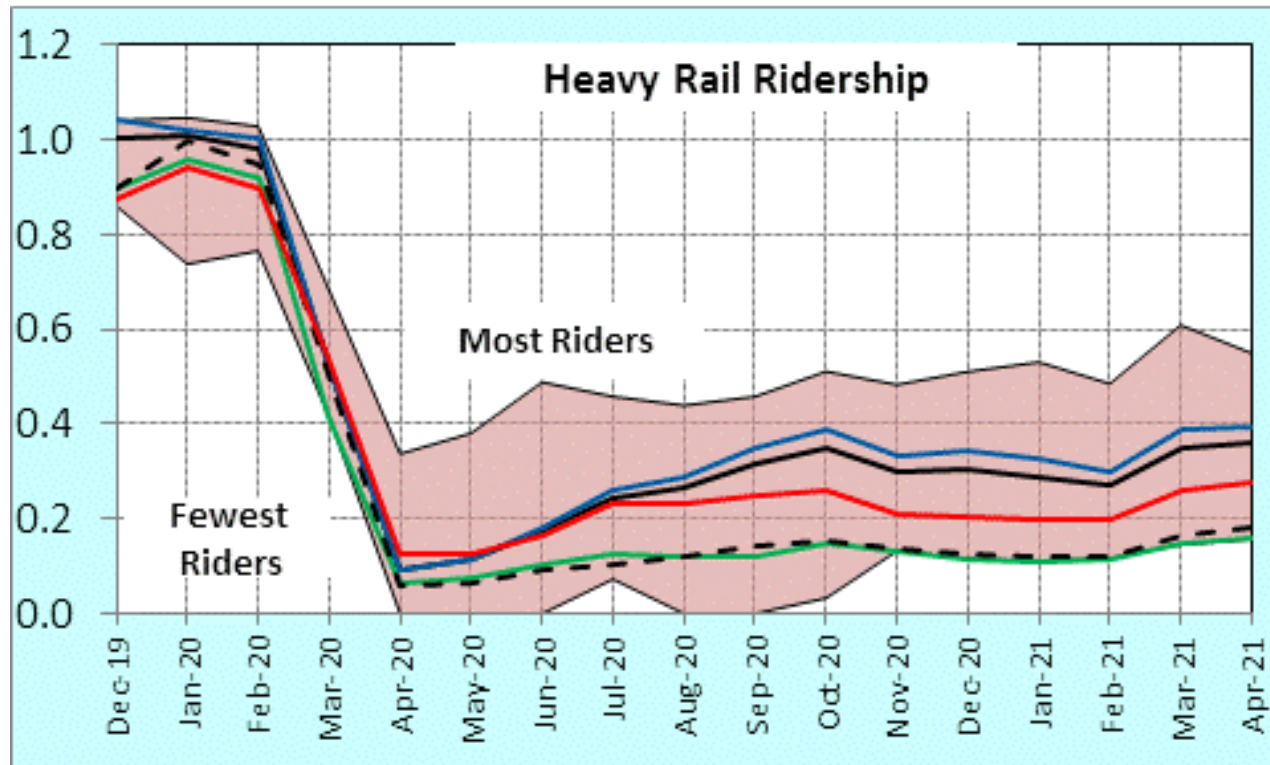
National Ridership vs. VRM – March 2021



Marks below the red line indicate greater loss of ridership than reductions in service

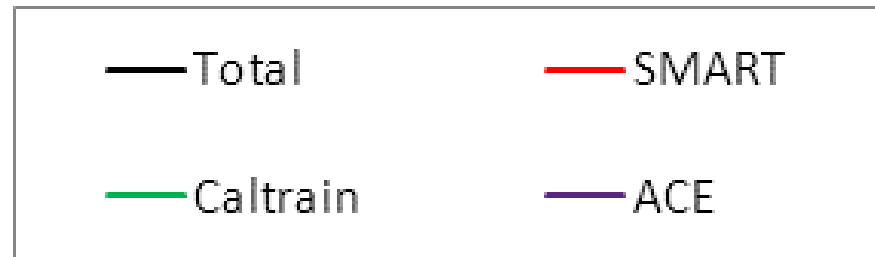
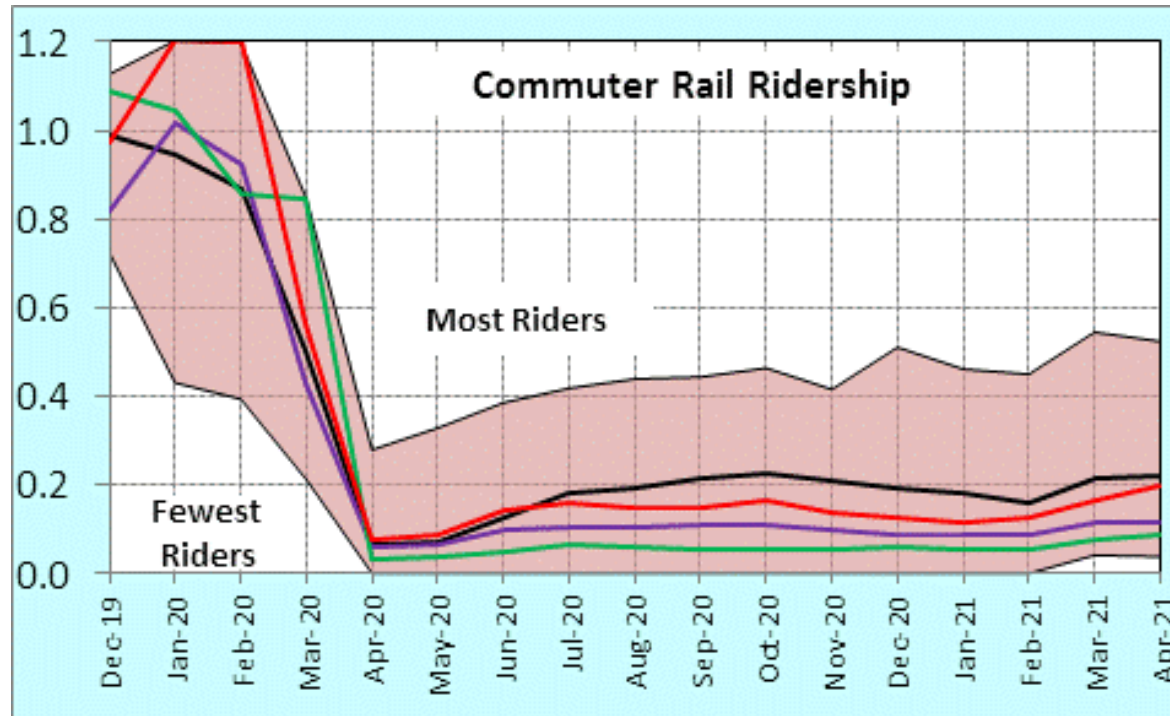
National – Heavy Rail

Ratio to
Average
2019
Levels



National-Commuter Rail

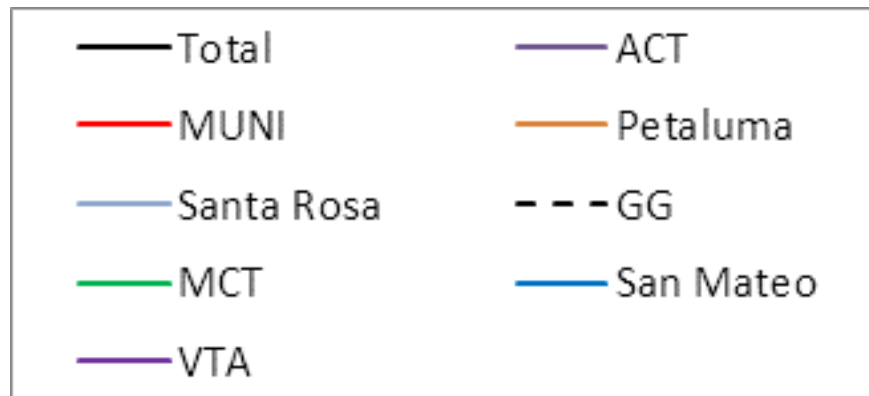
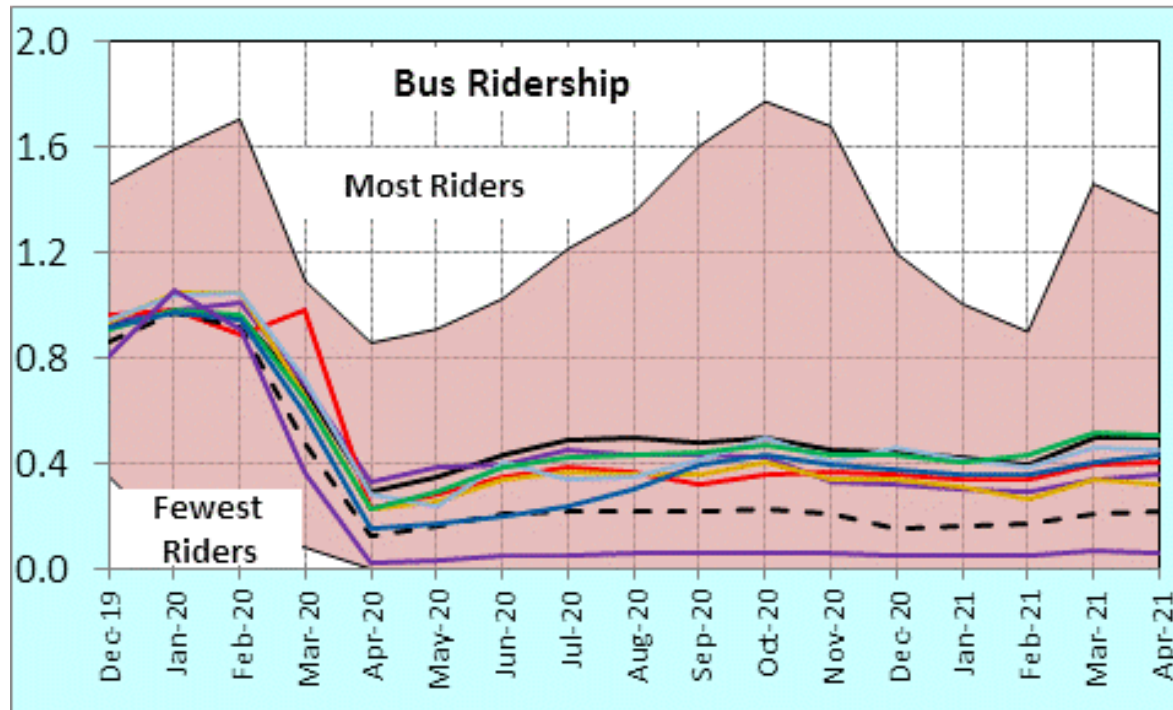
Ratio to
Average
2019
Levels




All Commuter
Rail Systems

National – Buses

Ratio to
Average
2019
Levels

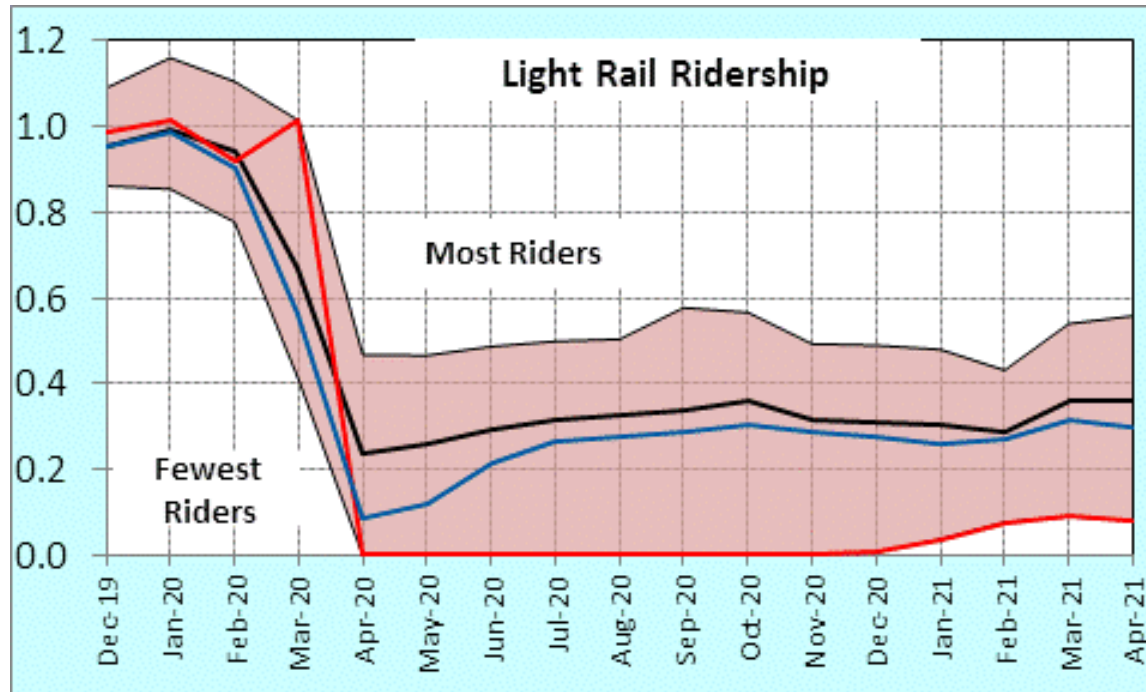


 All Bus Systems*

* Note: Smaller systems ignored

National - Light Rail

Ratio to
Average
2019
Levels



— Total

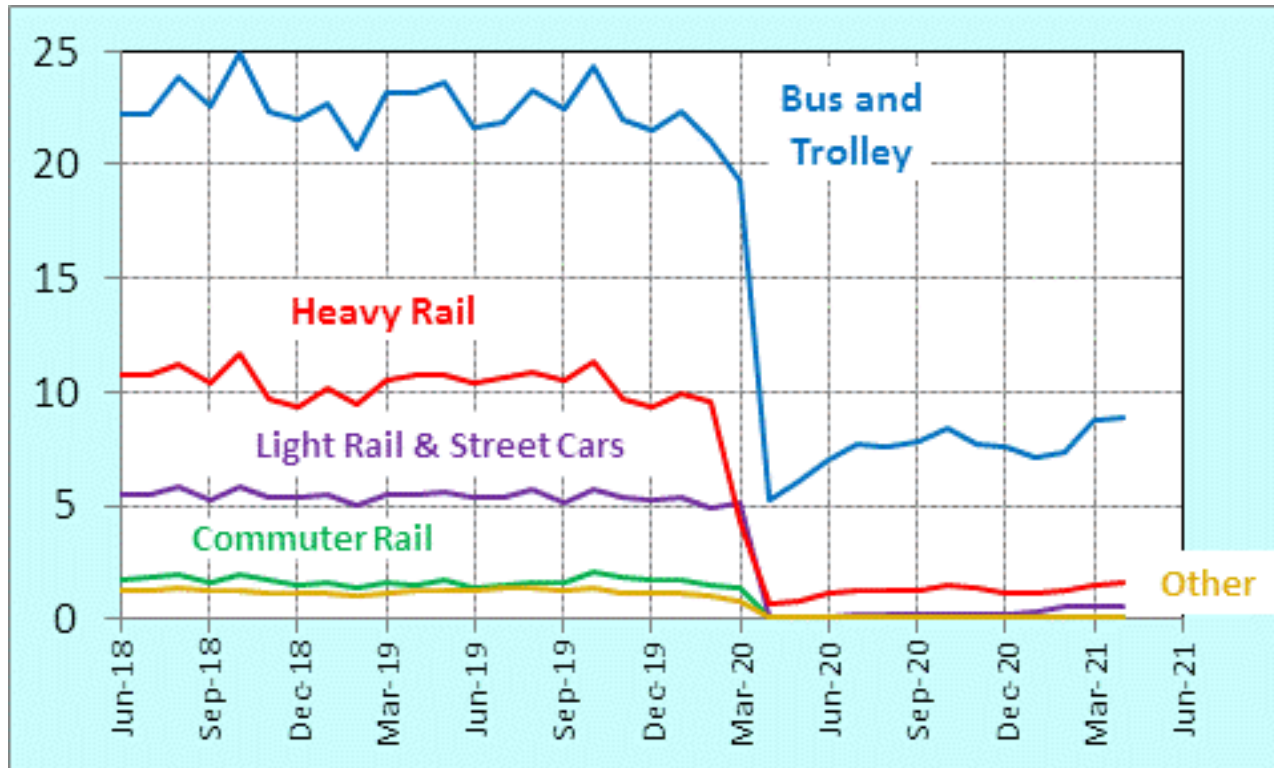
— MUNI

— VTA

■ All Light Rail Systems

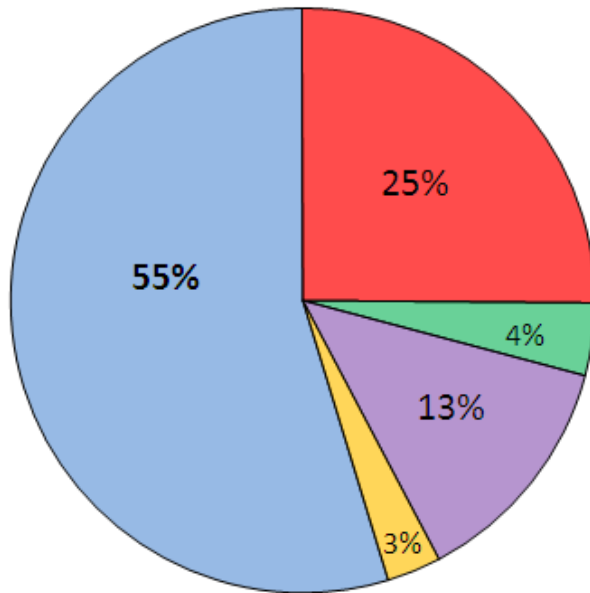
Bay Area Transit Ridership by Mode

Millions
of
Riders
per
Month

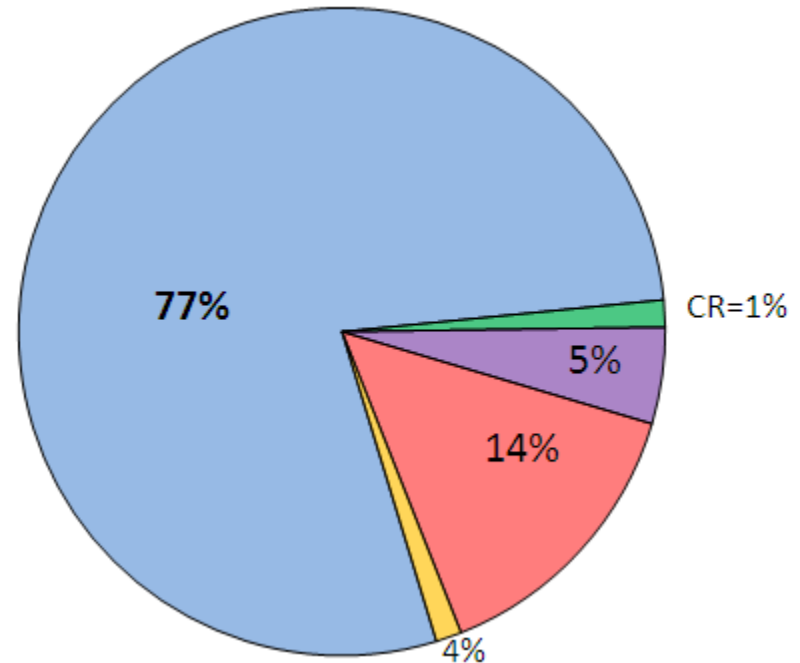


Bay Area Transit Mode Shares

Avg. 2019
Riders



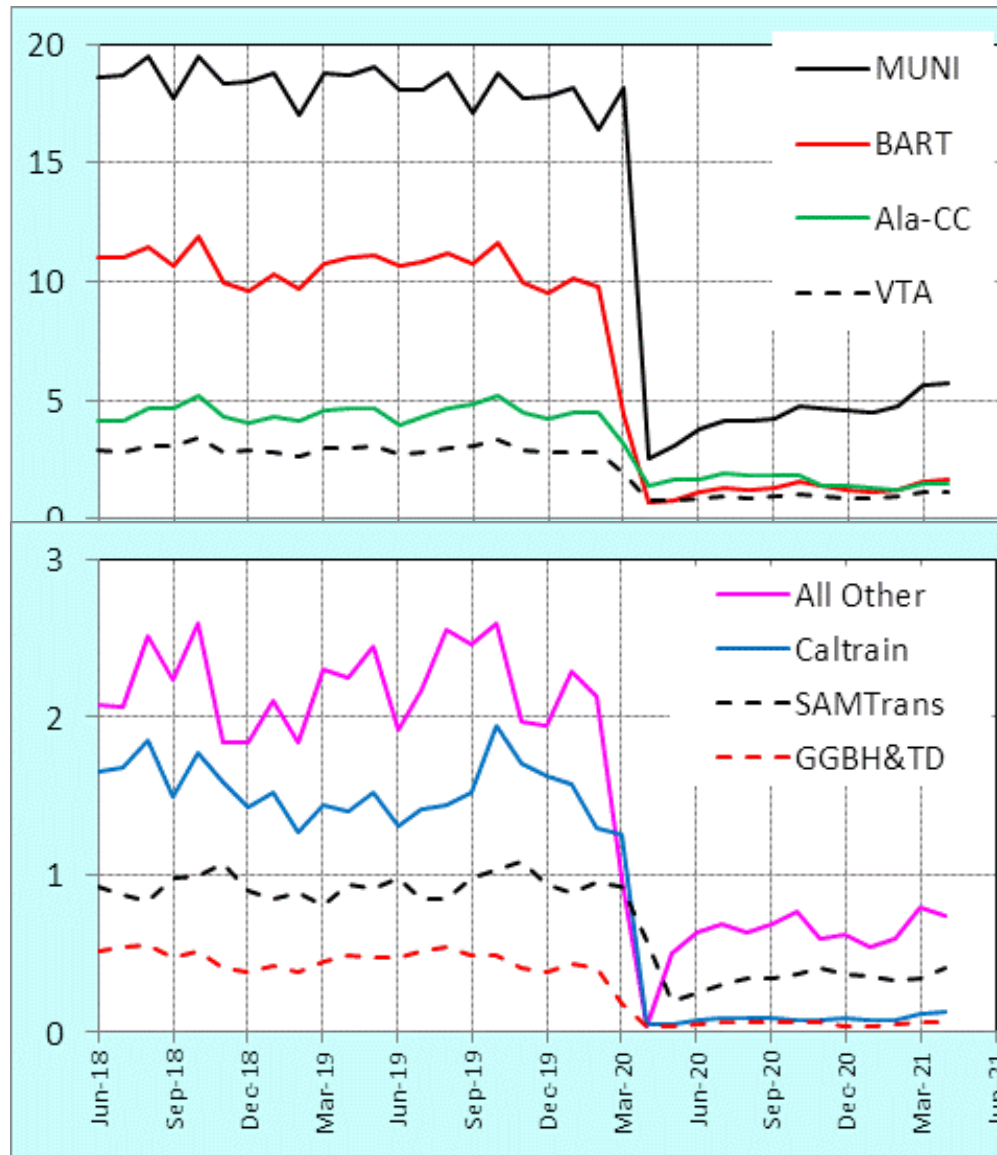
Apr 2021
Riders



- Buses
- Heavy Rail
- Commuter Rail
- Light Rail & Street Cars
- Other

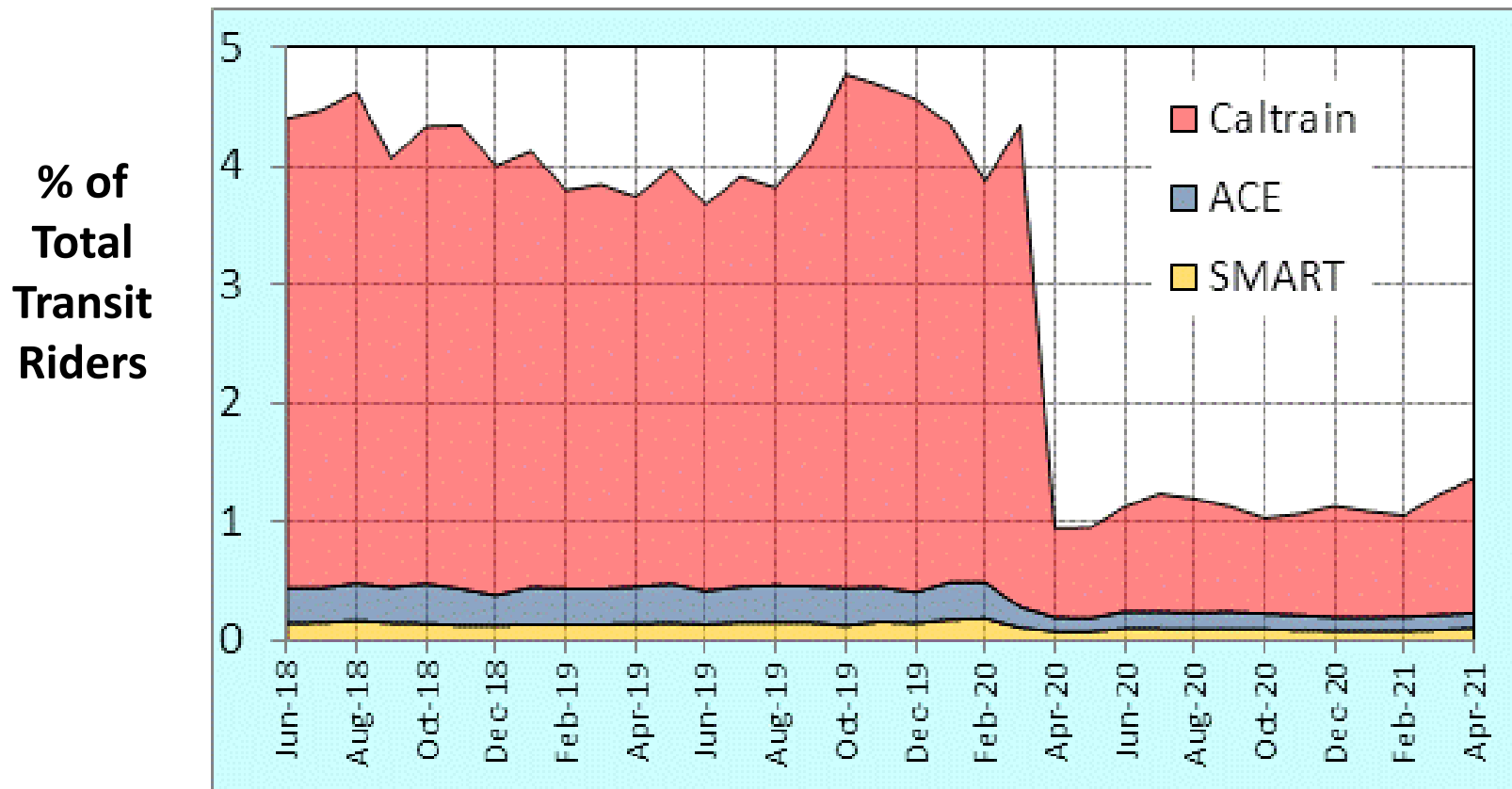
Bay Area Transit Ridership by Agency

Millions
of
Riders
per
Month



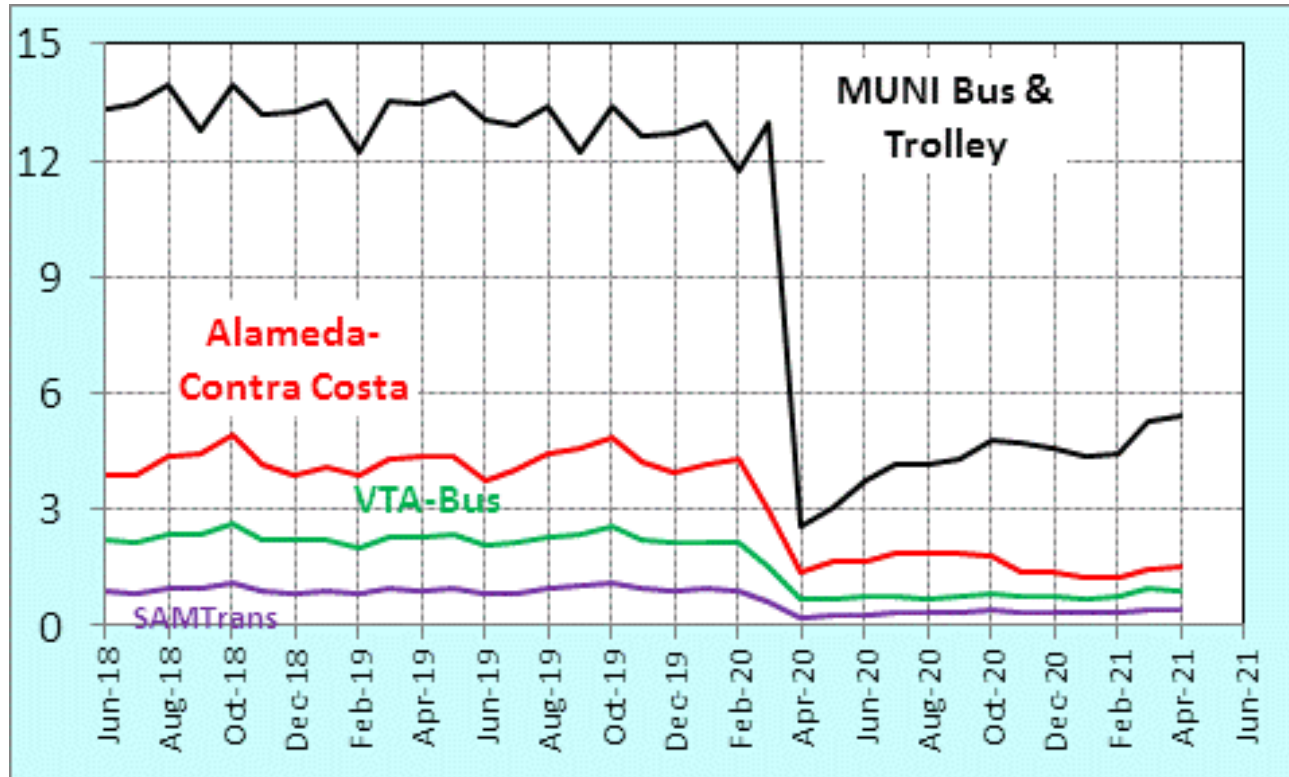
Note: Different Scale

Bay Area Commuter Rail Ridership as Share of Total Transit Riders



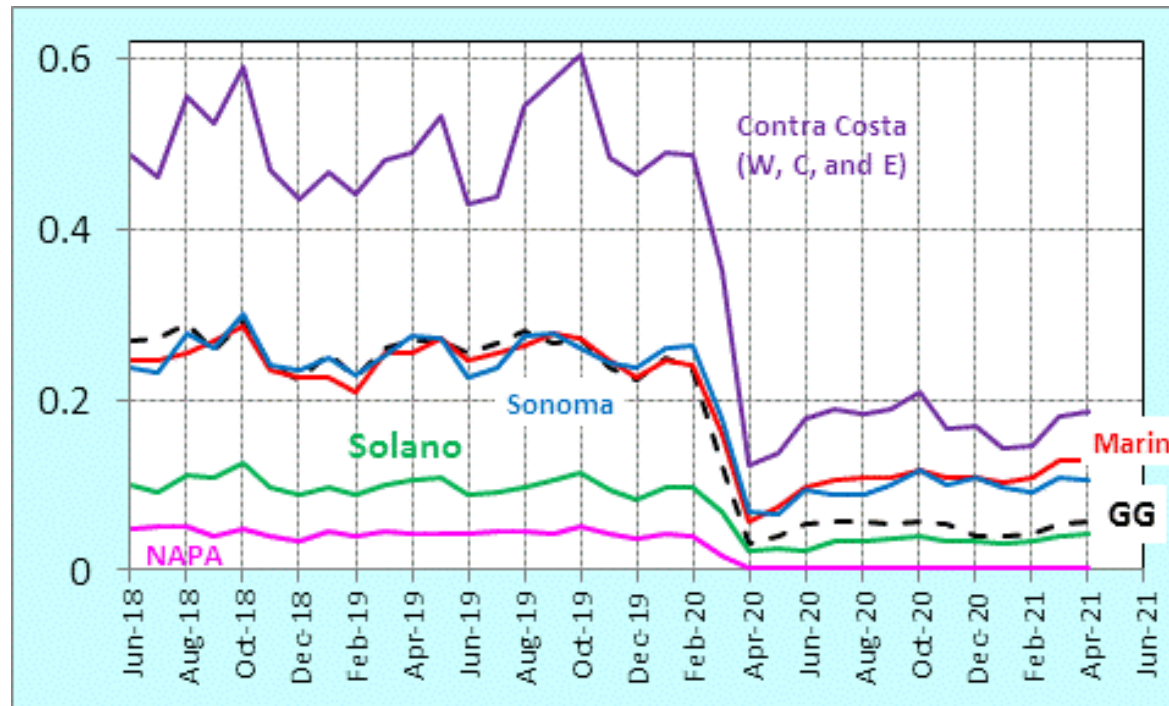
Bay Area – Bus Ridership – Largest Agencies

Millions of
Riders per
Month



Bay Area – Bus Ridership – Smaller Agencies

Millions of
Riders per
Month



Sonoma includes Sonoma Co, Petaluma and Santa Rosa

Solano includes Solano Co and Fairfield

Contra Costa includes Central, West and Eastern Co. districts