

# Sonoma-Marín Area Rail Transit District



## General Manager's Report – January 2022

5401 Old Redwood Highway, Suite 200  
Petaluma, CA 94954

Tel: (707) 794-3330; Fax: (707) 794-3037

[www.SonomaMarinTrain.org](http://www.SonomaMarinTrain.org)



**SMART**

|| SONOMA-MARIN AREA RAIL TRANSIT

# COMMUNITY OUTREACH AND MARKETING

## Community Outreach | Community Events and Presentations

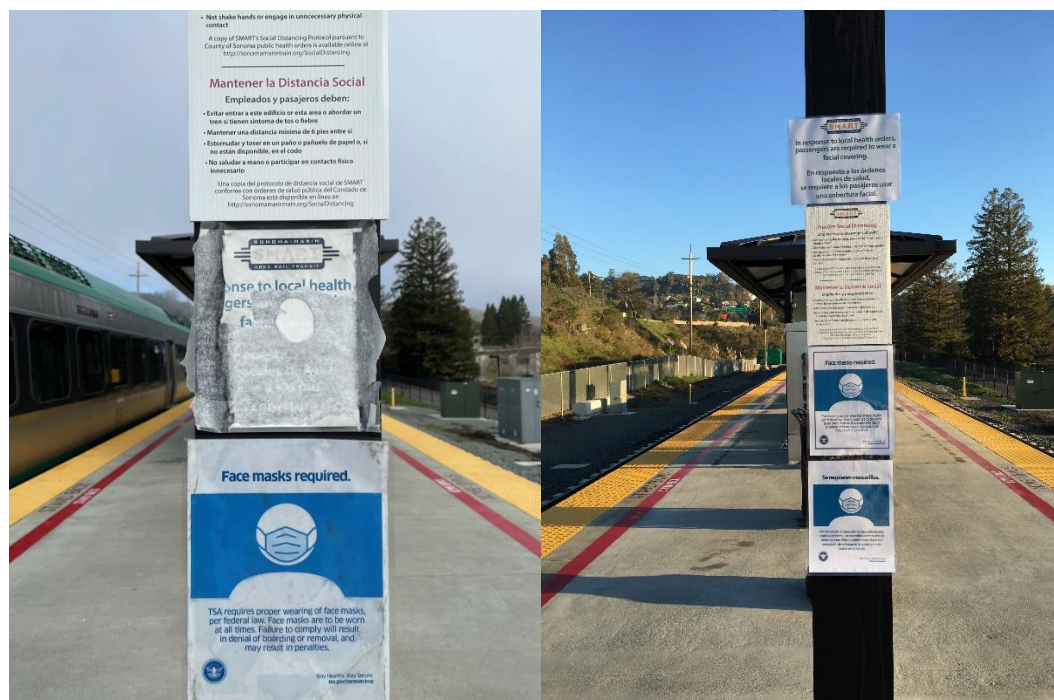
The SMART Community Outreach Team has only been able to participate in one community event since March of 2020, the Novato Festival of Art, Wine and Music on August 21/22, 2021. We are excited about the 2022 community outreach events season as there are several upcoming events on this year's calendar: the Cloverdale Citrus Fair (April 21-24), the Petaluma Butter & Eggs Day Parade, and the Novato Festival of Art, Wine and Music (June 18). Please put these dates on your calendar and come out to support our communities. We look forward to seeing our old friends and meeting new friends at these events.

### SMART Presentations:

- January 6, 2022 | Good Morning, Healdsburg! Healdsburg Chamber of Commerce (Eddy Cumins and Matt Stevens)

## Community Outreach | Station Platform Signage

The SMART Community Outreach Team replaced weather worn COVID-19 signage on all the station platforms. The team also added new ferry connection times onto the existing schedule decals located on platform shelter walls.



## Media | News Coverage

- January 15, *PD Editorial: A race against rising seas on Highway 37* (The Press Democrat)
- January 24, *SMART allots \$400K to hire temporary freight operator* (Marin Independent Journal)
- January 21, *George Russell: Would SMART train to Solano be amphibious?* (Marin Independent Journal)
- January 21, *Second Petaluma SMART station again delayed after funding falls through* (Petaluma Argus Courier)
- January 21, *State to back plan to use SMART trains to solve Highway 37 congestion. Here's how much it would cost* (Mass Transit)
- January 20, *SMART signs short-term deal for freight operator* (Trains)
- January 19, *SMART hires operator to run freight operations for three months, at cost of \$395,000* (Petaluma Argus Courier)
- January 19, *State to back plan to use SMART trains to solve Highway 37 congestion. Here's how much it would cost* (San Francisco Chronicle)
- January 19, *SMART hires operator to run freight operations for three months, at cost of \$395,000* (The Press Democrat)
- January 19, *PA: Other transit agencies not suffering from vaccine mandate for COVID-19 proposed by Port Authority* (Mass Transit)
- January 19, *State plan envisions SMART station in Solano County* (The Vallejo Times-Herald)
- January 18, *State plan envisions SMART station in Solano County* (Marin Independent Journal)
- January 18, *Dick Spotswood: From SMART ridership to vaccine rates, not all my predictions came true* (Marin Independent Journal)
- January 17, *Other transit agencies not suffering from vaccine mandate for COVID-19 proposed by Port Authority* (Pittsburg Post-Gazette)
- January 14, *SMART board approves in-house freight operation, ditches gas tanker storage, at a loss* (North Bay Business Journal)
- January 4, *Caltrans rolling out SMART rail plan linking Sonoma, Marin Solano counties* (North Bay Business Journal)
- January 4, *Caltrans rolling out SMART rail plan linking Sonoma, Marin Solano counties* (Petaluma Argus Courier)
- January 1, *Dick Spotswood: Six big wishes for Marin in 2022* (Marin Independent Journal)
- December 31, *Marin Voice: New SMART general manager must change the culture* (Marin Independent Journal)

# OPERATIONS

---

## TRANSPORTATION:

- Training one Controller Supervisor, two Conductor, and three Engineers-Conductors.
- One Conductors has been certified.

## MAINTENANCE OF WAY:

- After outfitting SMART's rotating bed hyrail dump truck with a modification to guide ballast distribution, 2 members of the Track Team dumped approximately 2,000 tons of ballast over 7 ½ miles in preparation for contract surfacing work.
- The Signal Team replaced gates damaged by a car at Lakeville Ave in Petaluma.
- Track Team cut, chipped, and removed a large oak tree from the right of way in Windsor that had been damaged in a storm.
- Facilities rebuilt approximately 90 feet of fence damaged by the oak tree.
- Track Team responded to a car on the tracks at Steele Lane.
- The Track Team worked with the contractor on overnight surfacing, covering an average of 7,400 feet per night.
- The Signal Team disabled as many as 13 crossings each night after revenue service and placed them back in service before revenue the next morning, in support of the surfacing work.
- The Facilities Team replaced a UPS power supply at the Haystack Bridge, getting the replacement covered under warranty
- The Facilities Team replaced defective emergency phones in the Puerto Suello Tunnel.
- The Signal Team performed 2-year locking tests at 12 locations.



Surfacing equipment (Harsco 6700 Tamper) arriving on site

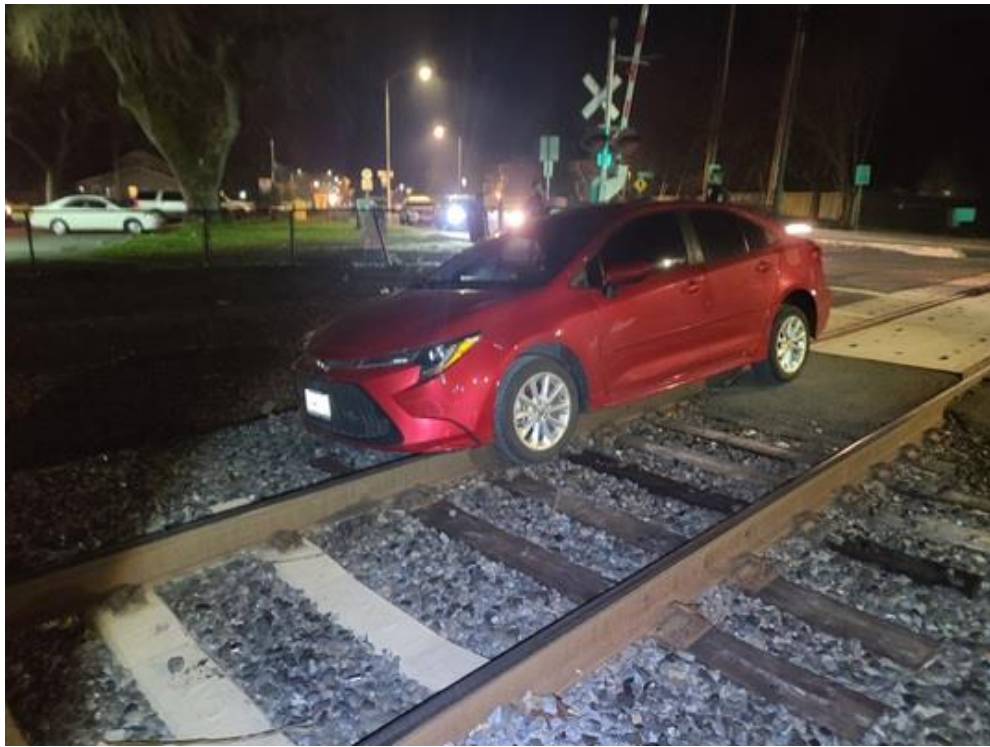




Oak tree down in Windsor, damaged fence



After tree cleanup and fence repair



Car on the tracks at Steele Lane, Santa Rosa

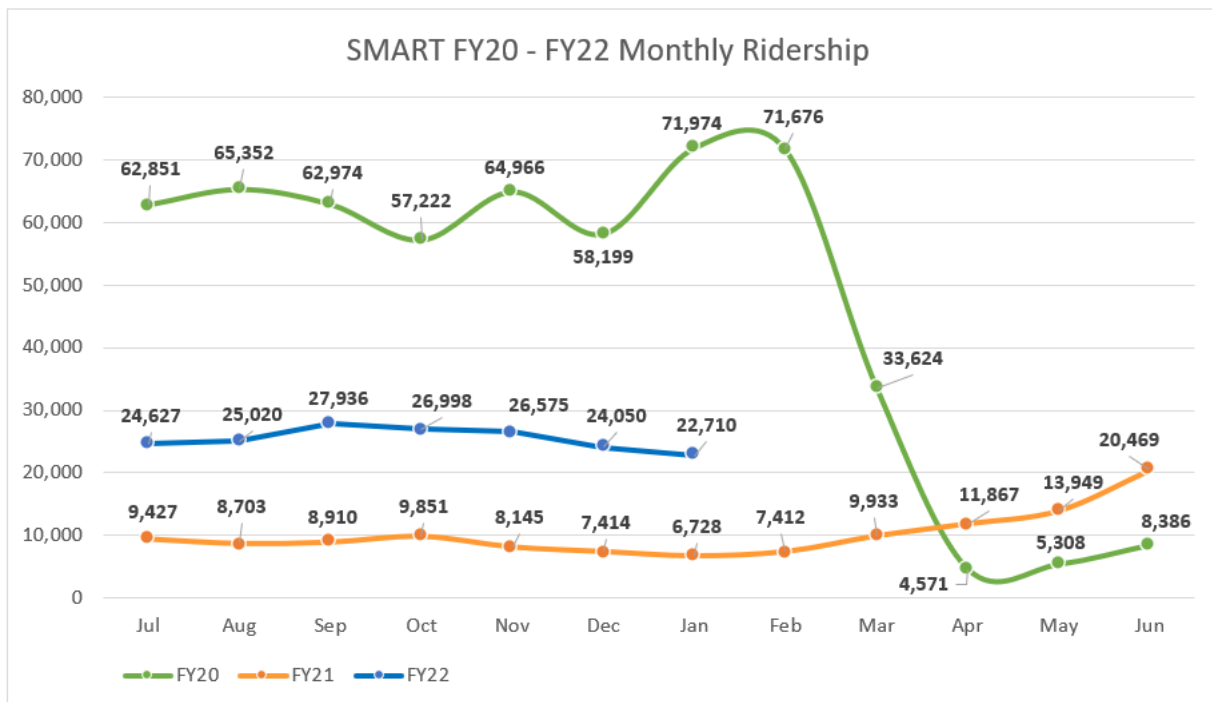
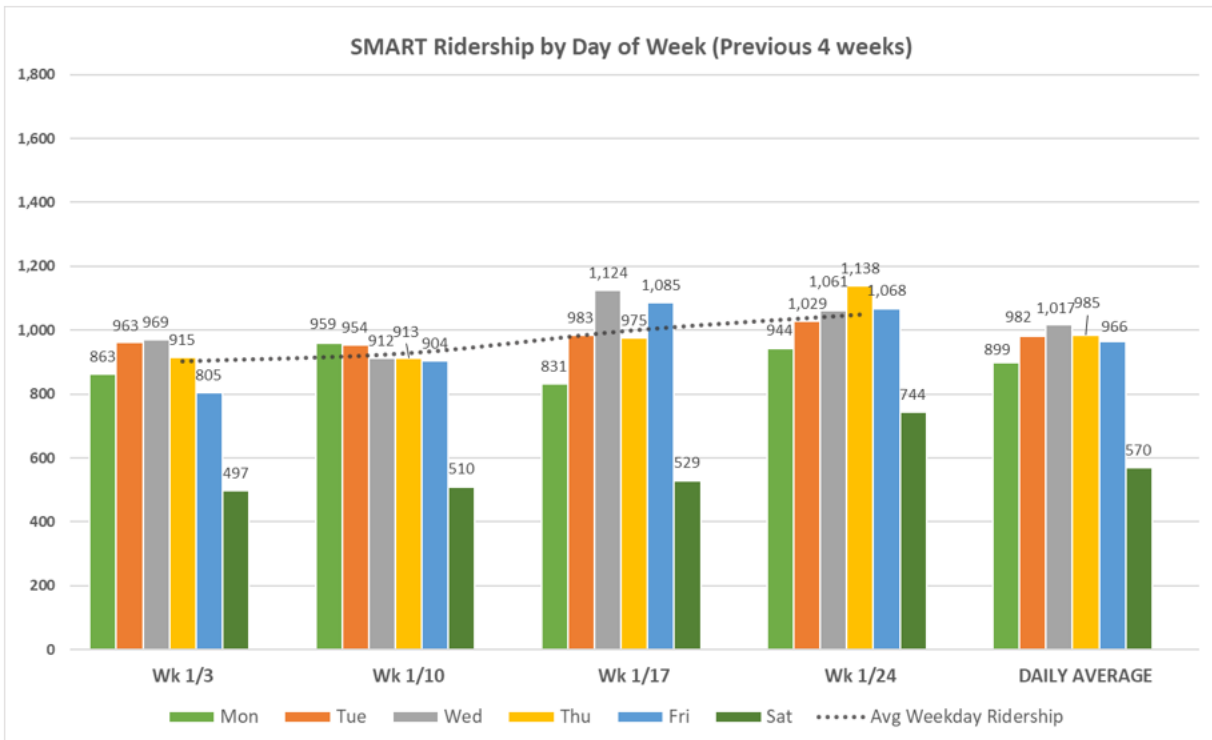


Tamper working at night

# RIDERSHIP INFORMATION

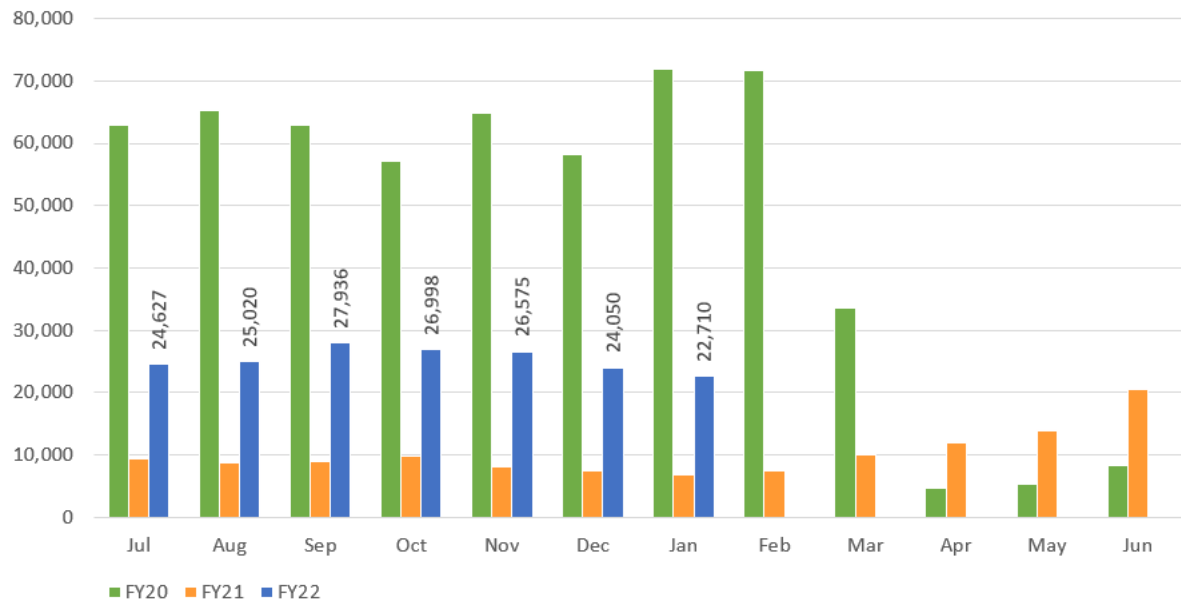
FY22 SMART Ridership Weekly Report (DRAFT; COVID-19)											
Week of	Mon	Tue	Wed	Thu	Fri	Sat	Sun	Weekly Total (Onboard Counts)	Avg Weekday Ridership	Bikes	Wheelchairs
6/28/2021	668	837	910	957	967	718	265	5,057	868	810	39
7/5/2021	599	868	1,037	905	923	596		4,928	933	769	39
7/12/2021	922	913	978	967	996	831		5,607	955	930	12
7/19/2021	871	994	1,023	1,010	1,013	631		5,542	982	879	41
7/26/2021	837	982	970	1,152	996	706		5,643	987	937	23
8/2/2021	849	947	975	931	962	683		5,347	933	842	36
8/9/2021	884	1,037	943	1,005	893	641		5,403	952	1,026	39
8/16/2021	995	1,051	1,075	1,112	1,173	731		6,137	1,081	1,016	31
8/23/2021	1,002	1,083	1,052	1,163	1,070	522		5,892	1,074	1,021	18
8/30/2021	1,110	1,131	1,137	1,265	1,230	808		6,681	1,175	968	36
9/6/2021	581	1,072	1,206	1,170	1,168	673		5,870	1,154	967	53
9/13/2021	1,111	1,156	1,169	1,203	1,150	684		6,473	1,158	1,069	31
9/20/2021	1,131	1,164	1,162	1,205	1,046	726		6,434	1,142	1,164	35
9/27/2021	1,089	1,243	1,241	1,177	1,217	576		6,543	1,193	1,192	20
10/4/2021	1,026	1,180	1,111	1,200	1,180	751		6,448	1,139	1,072	31
10/11/2021	1,056	1,177	1,096	1,207	1,344	737		6,617	1,176	1,047	39
10/18/2021	1,156	1,177	1,044	1,122	1,037	536		6,072	1,107	761	21
10/25/2021	918	1,169	1,222	1,135	1,161	463		6,068	1,121	856	11
11/1/2021	911	1,198	1,240	1,161	1,228	586		6,324	1,148	887	18
11/8/2021	1,132	1,000	1,142	1,289	1,331	735		6,629	1,179	843	13
11/15/2021	1,088	1,231	1,266	1,200	1,251	743		6,779	1,207	923	48
11/22/2021	1,074	1,086	1,157		586	688		4,591	1,106	520	26
11/29/2021	1,117	1,135	1,175	1,175	1,250	604		6,456	1,170	898	20
12/6/2021	1,105	1,122	1,150	1,216	1,177	736		6,506	1,154	899	22
12/13/2021	868	1,236	984	1,054	1,095	663		5,900	1,047	676	11
12/20/2021	835	830	735	656	380			3,436	764	373	20
12/27/2021	811	814	841	1,008	530			4,004	869	401	10
1/3/2022	863	963	969	915	805	497		5,012	903	686	13
1/10/2022	959	954	912	913	904	510		5,152	928	781	21
1/17/2022	831	983	1,124	975	1,085	529		5,527	1,000	771	11
1/24/2022	944	1,029	1,061	1,138	1,068	744		5,984	1,048	812	22
<b>Average (4 week)</b>	<b>899</b>	<b>982</b>	<b>1,017</b>	<b>985</b>	<b>966</b>	<b>570</b>		<b>5,419</b>	<b>970</b>	<b>763</b>	<b>17</b>
Daily Average does not include holidays											
Blue indicates holiday (Saturday) service											



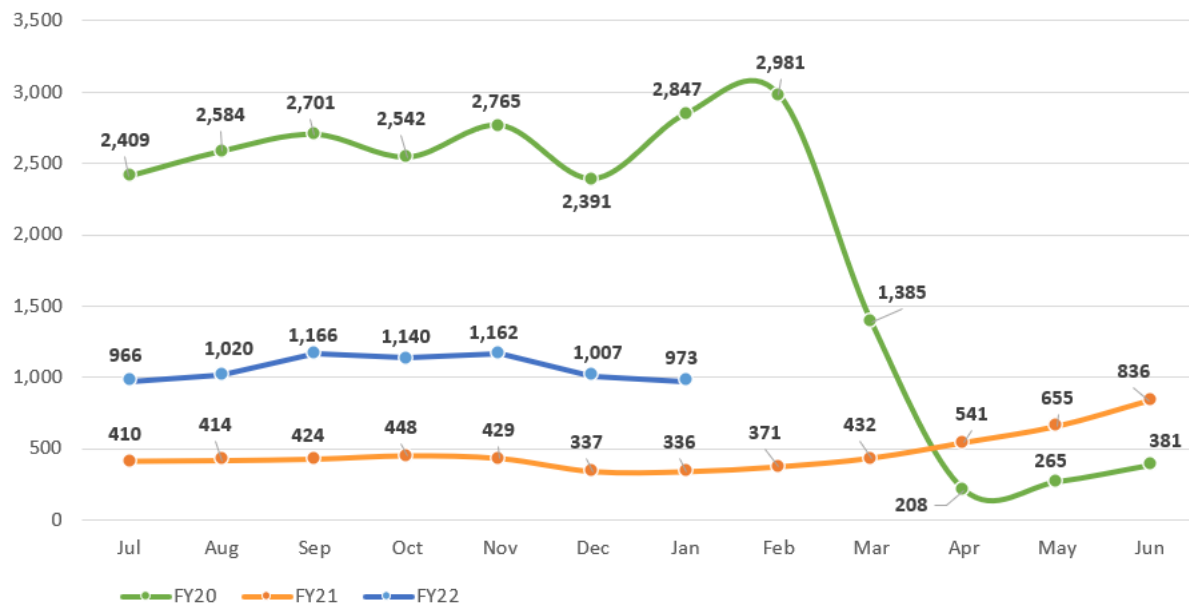




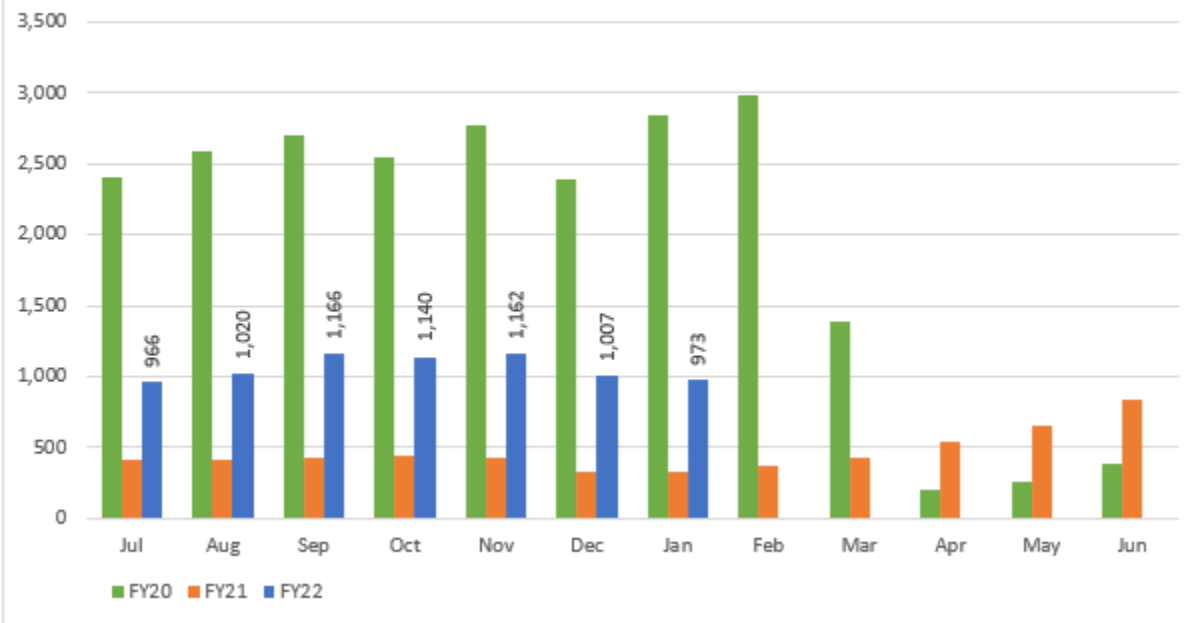
### SMART FY20 - FY22 Monthly Ridership



### SMART FY20 - FY22 Average Weekday Ridership



SMART FY20 - FY22 Average Weekday Ridership



# MULTI-USE PATHWAY PROJECT

---

## *Sonoma County Pathway Gap Closure Project- \$15.6M*

- South Point Boulevard in Petaluma to Main Street in Penngrove (2.9 mi)
- Golf Course Drive in Rohnert Park to Bellevue Avenue in Santa Rosa (2.8 mi)

The design team is focusing on:

- SMART is finalizing construction documents.
- SMART has submitted environmental permit application packages and is working with the regulatory agencies to secure construction permits.
- SMART is contacting utility owners to resolve utilities in conflicts in preparation for construction.
- SMART and City of Petaluma are coordinating elements of the North McDowell Boulevard to reconstruct the street and construct the SMART Pathway.



Future Pathway Location at Ely Road, Petaluma

### *Marin - Sonoma County Pathway Design and Permitting: \$10.8M*

- McInnis Parkway to Smith Ranch Road in San Rafael: 0.7 Miles
- Smith Ranch Road to Main Gate Road in San Rafael: 2.65 Miles
- State Access Road to Bay Trail Road in Novato: 1.4 Miles
- Hannah Ranch Road to South Side Novato Creek in Novato: 1.09 Miles
- Grant Avenue to Olive Avenue in Novato: 0.26 Miles
- Olive Avenue to Rush Creek Place in Novato: 0.38 Miles
- Main Street to E. Railroad Avenue in Santa Rosa: 1.48 Miles
- Santa Rosa Downtown Station to 6<sup>th</sup> Street, Santa Rosa: 0.4 Miles
- Guerneville Road to Airport Boulevard in Santa Rosa: 4.6 Miles

The pathway segments have been split into two separate design and permitting packages.

#### *The first:* Marin – Sonoma Pathway Design and Permitting

Staff has concluded contract negotiations with a designer and will be recommended for award at the next SMART Board of Directors meeting.

#### *The second:* Marin Pathway Design and Permitting

SMART issued a Request for Proposal (RFP) for the design and permitting services.



Future Pathway Location North of Adobe Road



## SAN RAFAEL CREEK RIPERIAN ENCHANCEMENT PROJECT

The project fulfills permit mitigation requirements to restore riparian habitat along the San Rafael Creek in the City of San Rafael. This mitigation was required as part of the Larkspur Extension Project environmental permits.

The SMART team is focusing on:

- Restoration planting is complete., and contractor will maintain and irrigate the mitigation site for the next five years. Maintenance and monitoring will start this spring.



SMART and Contractor Conducting the Punch List Walk

# HUMAN RESOURCE

---

## CURRENT OPEN RECRUITMENTS:

- Freight Manager
- Signal Technician
- Signal Supervisor
- Budget and Finance Manager
- Laborer

## INTERVIEWS CONDUCTED

- Accounting Manager
- Facilities Maintenance Supervisor
- Bridge Tender

## NEW PROMOTIONS/HIRES

- Hired two Engineer-Conductor, one Conductor, and an Accountant I
- Promoted an Ambassador to Conductor Trainee, a Laborer to Conductor Trainee, an Accounting Supervisor to Accounting Manager, and a Vehicle Maintenance Technician to Facilities Maintenance Supervisor.

# REAL ESTATE

---

## PROPERTY ACQUISITIONS

*Windsor Extension Project* - Staff is working to close out the transfer of property to the County for the redesigned and rebuilt bus pullout on Airport Boulevard in Santa Rosa. Staff is finalizing a draft agreement to send back to the County.

*North Coast Rail Authority (NCRA)* - Staff has been cataloguing all NCRA Agreements and has performed tenant outreach, talking to several tenants about the agreements, updates on property ownership, billing payments and any items of concern.

*Track work* – Research continues property rights for both SMART and property owners regarding the location of track.

*Pathway* - Coordinating with the adjacent property owners, tenants, and local municipalities regarding relocation of facilities and/or utilities and securing any necessary land rights to accommodate the construction of the pathways and interim access and laydown area needs. Staff is researching items needed for the San Rafael Airport segment of the Non-Motorized Path (NMP).

## PROPERTY MANAGEMENT

Staff is continuing to research SMART's ownership, property rights of ingress and egress easements and current and necessary agreements along the Brazos Branch and newly acquired NCRA segments up north to MP 89.

Staff is continuing the title work for the proposed NMP Project and continuing to address a variety of requests from adjacent property owners. Staff is also managing leases, licensing agreements, easements, and/or current Master agreements for utility and telecommunications companies that are crossing SMART property.

*Leases* - Staff is continuing the process of looking at existing leases to determine what needs to be brought current. Clover Stornetta has signed a new lease. Draft new leases are out for completion and signature with House of Daniels and Old Town Glass.

*License & Permit Rates* - Staff is working on a license and permit rate structure commensurate with others in our industry. Staff has spoken with other transit lines and is assembling rate options for transverse and longitudinal crossings and right of entry permits. Staff is looking at the valuation methods used, speaking with a nationally known rail appraiser as to methodology. Staff is also working on the updating of processes related to private crossings

#### RIGHT OF ENTRY PERMITS ISSUED:

Sonic- Fiber optic splicing- Piner Road- Santa Rosa  
Sonic- Conduit inspections- Larkspur Landing Circle- Larkspur  
Spencer Folz- Fencing at 1430 Funston Drive, Santa Rosa  
PG&E- Permit extension for Vegetation Management for Electrical Division

#### STAFF IS CONTINUING WORKING ON ISSUING RIGHT OF ENTRY PERMITS/LICENSE WITH:

PG&E- Electrical replacement and maintenance- Windsor  
City of Santa Rosa- Pathway Signage Project- Multiple locations/ Santa Rosa  
County of Marin- Signal light improvements- N. San Pedro/ Los Ranchitos- San Rafael  
OUTFRONT MEDIA- Fence relocation for NMP- Rohnert Park  
PG&E- Gas Pipeline Maintenance- Manuel Drive- Novato  
PG&E- Gas Regulator/Pipeline Installation/License Agreement- Fulton Yard- Santa Rosa/Fulton  
PG&E- Yearly Vegetation Management for Electrical Division  
PG&E- Gas Regulator Installation- Hart Lane- Santa Rosa/Fulton  
Fredric C. Divine Associates-/Homeward Bound- 1385 N. Hamilton Pkwy- Novato  
County of Marin- Simmons Slough Water Management System  
Marin County Flood Control – Installation of 3 pumps – Hwy 37  
Metro-MCI – request to connect to Sonic fiber line

#### ON-GOING PROPERTY MANAGEMENT ACTIVITIES

COMCAST – Staff is still working to finalize outstanding license agreement fees. Fiber Optic installation verifications in 7 locations. Legal working on Master Agreement.  
AT&T- Staff is working to finalize an update Master Agreement for maintenance of existing license agreements.  
License agreements for discovered local municipalities facilities on SMART Right of Way.  
ORecords research for all Private and Public crossings – continued data base development.  
Records research on Brazos Branch (Napa County – real estate records)  
Records research for Healdsburg.  
Work on Lease comparisons for updating all SMART leases.  
Work on Appraisal values for various Healdsburg properties and PG&E easements.  
Work with Accounting to get any past due Lessee's accounts up to date.  
Research of records for old Petaluma, Santa Rosa Rail line spur in Petaluma – downtown trestle  
Research of records for Healdsburg Station – environmental records researched  
Staff is continuing to work with Pacific Gas & Electric Company to refine access issues and update Master Agreement with after discovered facilities.  
Consulting with Engineering on costs.  
Continue to handle property management issues from adjacent landowners.  
Continue to support construction by doing property research for discovered property issues.  
Research property ownership for homeless encampments on Right of Way.  
Research on title issues to clarify property ownerships and survey as necessary to continue working with property owners to remove encroachments.  
Field work visiting SMART owned properties.



# GRANTS, LEGISLATION, PLANNING AND REGIONAL ACTIVITIES

## GRANTS

*Federal Department of Transportation Raise (Rebuilding American Infrastructure with Sustainability and Equity):* The Federal Department of Transportation released the Fiscal Year 2022 RAISE Notice of Funding Opportunity for \$1.5 billion in discretionary grants on January 28, 2022. Application deadline is April 14, 2022. RAISE Grants are for capital investments in surface transportation that will have a significant local or regional impact. Per the BIL, in addition to capital awards, DOT will award at least \$75 million for eligible planning, preparation or design of projects eligible for RAISE Grants that do not result in construction with FY2022 RAISE funding. In addition, DOT will award at least \$15 million for projects located in areas of persistent poverty or historically disadvantaged communities.

*California Transit and Intercity Rail Capital Program (TIRCP):* The California State Transportation Agency released the Fiscal Year 2022 TIRCP Call for Projects on November 19, 2021, with applications due March 3 and awards announced in June 2022. Approximately \$500 million is available, with any additional funds coming to the program resulting from the California Budget discussions to be made available through subsequent Calls for Projects.

## REGIONAL AND LOCAL PLANNING ACTIVITIES

*Local Planning Department Notification and Coordination Tracking:* Staff also tracks and reviews all notices sent by local jurisdictions for projects occurring adjacent to or nearby the railroad tracks. In 2022 to date SMART has received and reviewed 0 notice while in 2021 SMART received and reviewed a total of **38** different notices, compared to **108** in 2020 and **170** in 2019.

*State Route 37 – Planning Processes Underway:*

- SR37 Policy Committee (Resilient SR37);
- SR37 Caltrans Planning and Environmental Linkages Study (SR37 PEL Study);
- US 101-SR 121 Environmental & Design Alternative Analysis (DAA), *now merged with PEL*;
- SR37 Caltrans Comprehensive Multi-Modal Corridor Plan (SR37 CMCP).

The **SR37 Planning and Environmental Linkages (SR37 PEL) Study** meetings are scheduled quarterly. Staff participated in a public meeting January 25, 2022, at 5:30 p.m. on the Caltrans State Route 37 Planning and Environmental Linkages (PEL) Study efforts. The purpose of the meeting was to update stakeholders and the public on the PEL Study, purpose statement, evaluation criteria, and preliminary alignments.

*Federal Transit Administration – Sustainable Transit for a Healthy Planet Challenge:* On June 15, 2021, FTA launched the **Sustainable Transit for a Healthy Planet Challenge** to encourage transit agencies to build on progress already made and to further reduce GHG emissions from public transportation in support of greenhouse gas (GHG) reduction goals set by President Biden on April 21, 2021, Earth Day. The goal for the United States is to achieve a 50-52 percent reduction from 2005 levels in

economy-wide net GHG pollution in 2030. The State of California's current goal is to reduce its GHG emissions by 40% below 1990 levels by 2030.

The FTA's ***Sustainable Transit for a Healthy Planet Challenge*** encourages transit agencies to take bold actions and investments to cut GHG emissions. The challenge calls on transit agencies to develop climate action strategies with measurable goals to achieve GHG emission targets. All transit agencies nationwide, regardless of size or service area, are encouraged to develop climate action or sustainability plans that detail GHG reduction strategies, such as converting fleets to lower emissions and making facilities more energy efficient.

Area transit agencies who have signed up to participate in this FTA challenge include SMART, BART, SF Bay Ferry (WETA), San Francisco Municipal Transit Agency (MTA), Alameda-Contra Costa (AC) Transit, Santa Clara Valley Transportation Authority (VTA), Napa Valley Transportation Authority (Napa VINE), and Mendocino Transit Authority (MTA).

SMART staff will be compiling recommended elements for an FTA-supported Climate Action/Sustainability Plan and present to the results to the SMART Board in the Spring 2022. Deadline for agencies to submit their climate action strategies with measurable goals to achieve GHG emission targets will be April 15, 2022.

#### TRANSIT COORDINATION MEETINGS

- **January 5, 2022** - Staff participated in the Metropolitan Transportation Commission (MTC) monthly **Transit Finance Working Group** meeting. Discussions included several standing item updates including legislative, funding notices, upcoming State discretionary grant programs and MTC respective endorsement strategies for each of the funding opportunities.
- **January 12, 2022** - Staff participated in the monthly Sonoma County Transportation Authority Transit TAC.
- **January 11, 18 & 25 - 2022** – Bay Area Transit Operator ongoing coordination meetings. SMART staff met with the Bay Area's smaller transit operators, defined as any except the seven largest transit operators, weekly. This month's focus continued to be the appointment of one of the smaller transit operator General Manager's to represent all the smaller operators on the regional Clipper Executive Board. An interim appointment has been made with a final to be deliberated and designated by July 1, 2022.

## SAFETY AND SECURITY

---



Motorcycle on North Hopper Street, Petaluma