

Sonoma-Marin Area Rail Transit District



General Manager's Report – August 2021

5401 Old Redwood Highway, Suite 200
Petaluma, CA 94954
Tel: (707) 794-3330
Fax: (707) 794-3037
www.SonomaMarinTrain.org



SMART

|| SONOMA-MARIN AREA RAIL TRANSIT



4 Year *Anniversary*

Providing a safe,
reliable and congestion-free
transportation option for Marin
and Sonoma counties.



SMART || SONOMA~MARIN AREA RAIL TRANSIT

After carrying 2,045,000 riders, 218,000 bicycles, and 7,890 wheelchair users – SMART celebrated its 4th year of passenger service on Wednesday, August 25, 2021.

Two years later beginning service in December 2019, SMART opened two new stations in downtown Novato and at Larkspur which resulted in weekday ridership increasing 40% from the prior year's ridership numbers and weekend ridership soared an impressive 70%.


Since opening service in 2017 – SMART has responded to 4 major fires, 2 major floods, and a global pandemic, yet through all these challenges, SMART and its employees have demonstrated strength and resolve in their commitment to providing the best public transportation service in America.



Sonoma-Marin Area Rail Transit

Published by Hootsuite · August 25 at 9:00 AM · 🌐

Today, SMART turns four years old! 🥳 That's four years of SMART trains connecting communities across Sonoma and Marin. To keep the celebration going, weekday passes are reduced to \$1.50 per zone travelled and \$12 Sail & Rail promotions with [Golden Gate Ferry](#) are available now! <https://www.sonomamarintrain.org/fares>
#WelcomeBackToSMARTride




4,880
People Reached

457
Engagements

↑ +2.4x Higher
Distribution Score

Boost Post

 99

29 Comments 24 Shares

COMMUNITY OUTREACH AND MARKETING

Community Outreach | Novato Festival of Art, Wine and Music

The SMART Community Outreach Team consisting of staff members from several departments participated in SMART's first public outreach event in more than 17 months. SMART staff connected with nearly 1,100 people during the 2-day Novato Festival of Art, Wine and Music. Many festival goers were particularly happy that they could travel to this year's event by train and walk from the Novato Downtown Station.







Marketing | Digital Media

Civic Edge Consulting has been supporting SMART's Welcome Back marketing campaign launched in June. The following is web and digital ad analytics update through August 8.

SMART website analytics:

- Since the May 19 Welcome Back Campaign launch, there have been 74,234 visitors to the SMART website, 79 percent or 58,644 of which are new visitors.
- The average session duration is a little over two minutes, which is a good average and tells us the visit is intentional.
- As expected, schedules and fares are the top pages visited.
- Mobile devices are used most frequently to access site.

Paid digital ads update:

- All ads have been performing well, including Spanish language ads.
- Digital ads served up nearly 4 million impressions.
- LinkedIn, NextDoor and Instagram ads, as well as High Impact banners ads are performing well.
- Spotify audio ads were underperforming, so media buy dollars were shifted higher performance spaces.

Media | News Coverage

- August 21, Dick Spotswood: To reduce costs, SMART should contract with Golden Gate Transit (Marin Independent Journal)
- August 16, \$12 'Sail and Rail' fare to S.F offered through September (San Francisco Examiner)
- August 14, 'Sail and Rail' fare combines ferry, SMART train (KRON TV Channel 4)
- August 14, 'Sail and Rail' fare combines ferry, SMART train services (San Rafael Patch)
- August 13, San Rafael Transit Center relocation project up for public review (Mass Transit Magazine)
- August 12, San Rafael Transit Center relocation project up for public review (Marin Independent Journal)
- August 6, It's a former office park and ghost town. Now, a Marin property could turn into 1,100 homes (San Francisco Chronicle)
- August 4, Editorial: More questions than answers with SMART's new freight endeavor (Marin Independent Journal)

OPERATIONS

VEHICLE MAINTENANCE:

- Performed field modification upgrade to the Selective Catalytic Reduction brackets on Diesel Multiple Units 104 and 115. This upgrade is performed by lifting the Diesel Multiple Unit and removing the engine and diesel power module. Once the brackets are replaced, the engine and diesel power module are reinstalled
- Performed annual maintenance on 1 Diesel Multiple Unit
- Performed mid-year maintenance on 2 Diesel Multiple Units
- Performed 500-hour oil change on 8 Diesel Multiple Units
- Automatic Train Control maintenance performed on 3 Diesel Multiple Units. This maintenance keeps us compliant with Federal Regulatory Association regulations with regards to positive train control
- Performed data downloads on the fleet. The Diesel Multiple Units have many subsystems that are integrated. Downloading the systems data provides SMART an opportunity to investigate different occurrences that may not show during our normal inspections

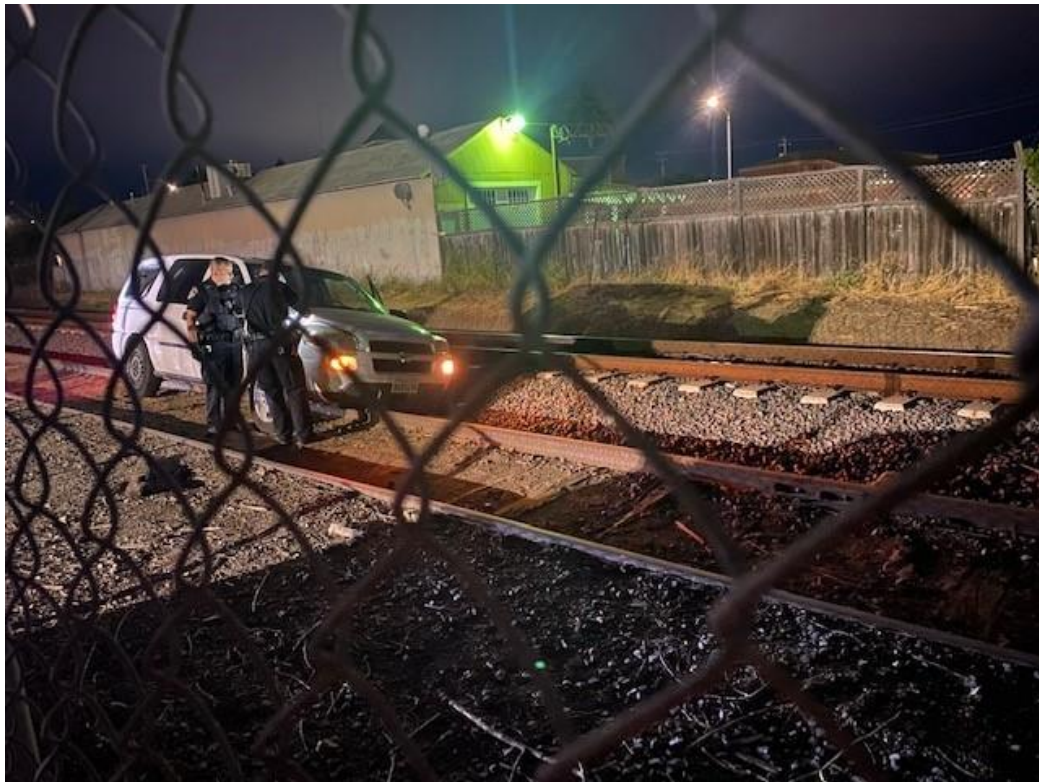
TRANSPORTATION:

- Training new Dispatcher and Conductor
- On the job training continues for two employees

MAINTENANCE OF WAY:

- Five employees from Track, Signals, and Facilities completed their Employee in charge training and testing
- Signal Trainee program is going well. Supervisors anticipate the trainees to be ready for full duty by early 2022 pending competency testing
- Signal team and Train Control manager worked with the city of Rohnert Park on Traffic preemption upgrades at Gulf Course Drive.
- Track department has promoted a Track II employee to a track supervisor for the South territory
- Track team will be removing the crossing panels at river bend private crossing
- Facilities team completed 10 fence repairs in various locations
- Facilities team along with the engineering department, completed Emergency navigation light repair at Black point bridge due to maritime damage

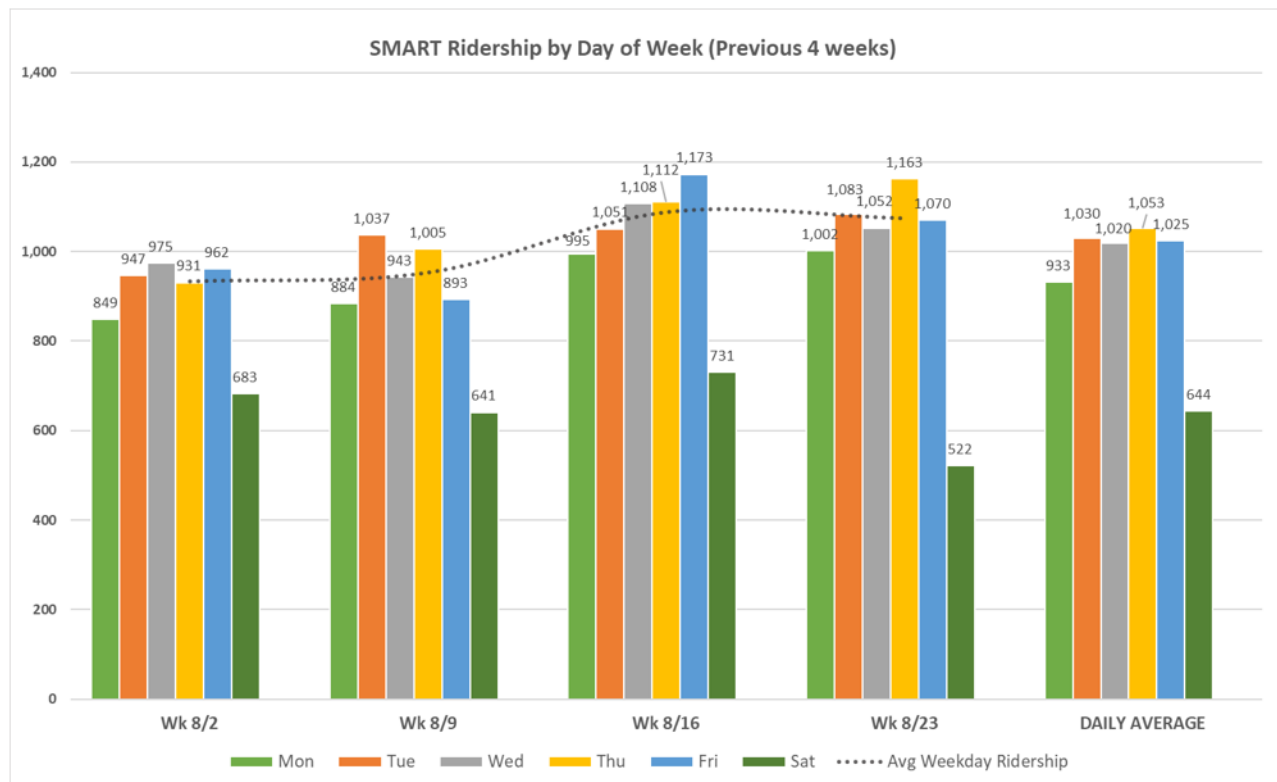
The car on the track occurred at 5:10am on August 21, 2021. The track was cleared and inspected by 6:10am. There was a 7 minute delay for Train 1.



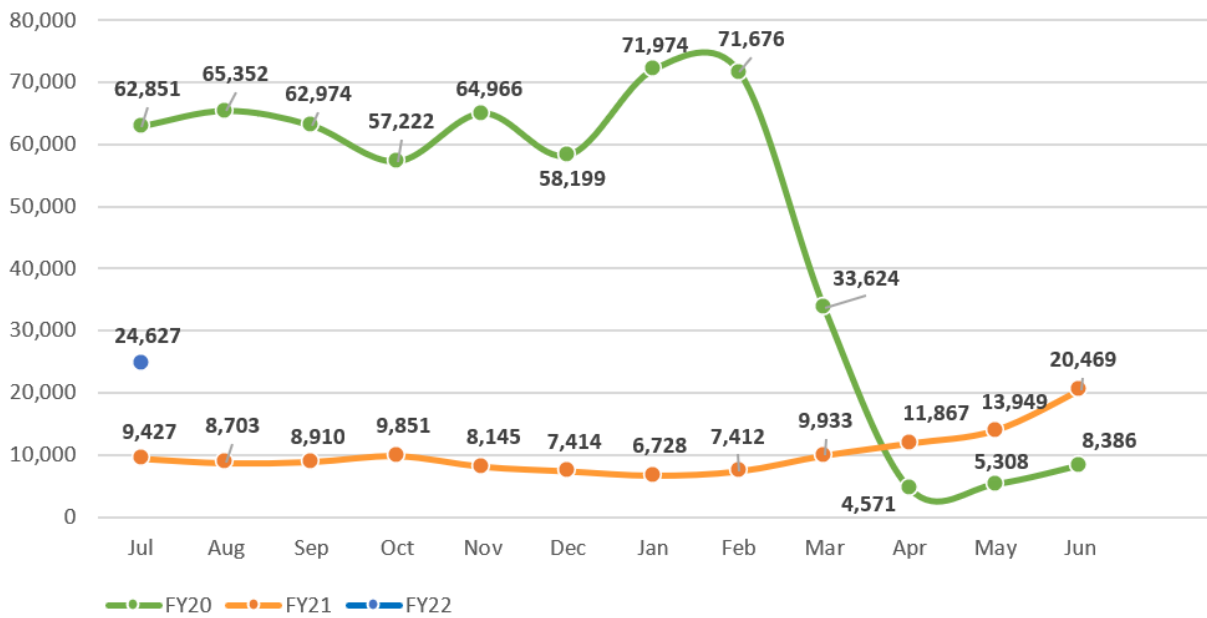
Car on track along Hopper Street, Petaluma

RIDERSHIP INFORMATION

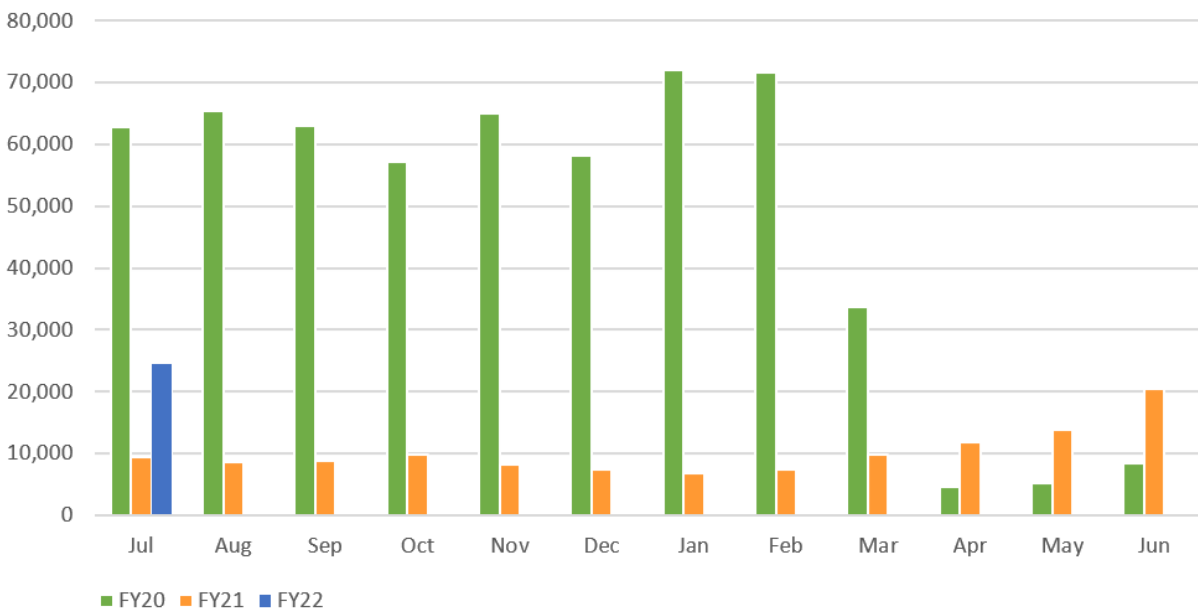
FY22 SMART Ridership Weekly Report (DRAFT; COVID-19)											
Week of	Mon	Tue	Wed	Thu	Fri	Sat	Sun	Weekly Total (Onboard Counts)	Avg Weekday Ridership	Bikes	Wheelchairs
6/7/2021	698	812	813	774	814	544		4,455	782	832	44
6/14/2021	742	856	851	856	885	465		4,655	838	760	30
6/21/2021	802	931	1,026	958	1,052	569		5,338	954	928	45
6/28/2021	668	837	910	957	967	718	265	5,057	868	810	39
7/5/2021	599	868	1,037	905	923	596		4,928	933	769	39
7/12/2021	922	913	978	967	996	831		5,607	955	930	12
7/19/2021	871	994	1,023	1,010	1,013	631		5,542	982	879	41
7/26/2021	837	982	970	1,152	996	706		5,643	987	937	23
8/2/2021	849	947	975	931	962	683		5,347	933	842	36
8/9/2021	884	1,037	943	1,005	893	641		5,403	952	1,026	39
8/16/2021	995	1,051	1,108	1,112	1,173	731		6,170	1,088	1,016	31
8/23/2021	1,002	1,083	1,052	1,163	1,070	522		5,892	1,074	1,021	18
Average (4 week)	933	1,030	1,020	1,053	1,025	644					
Fiscal Year (FY22) began on Thursday, July 1st (line indicates new fiscal year)											
Blue indicates holiday service											



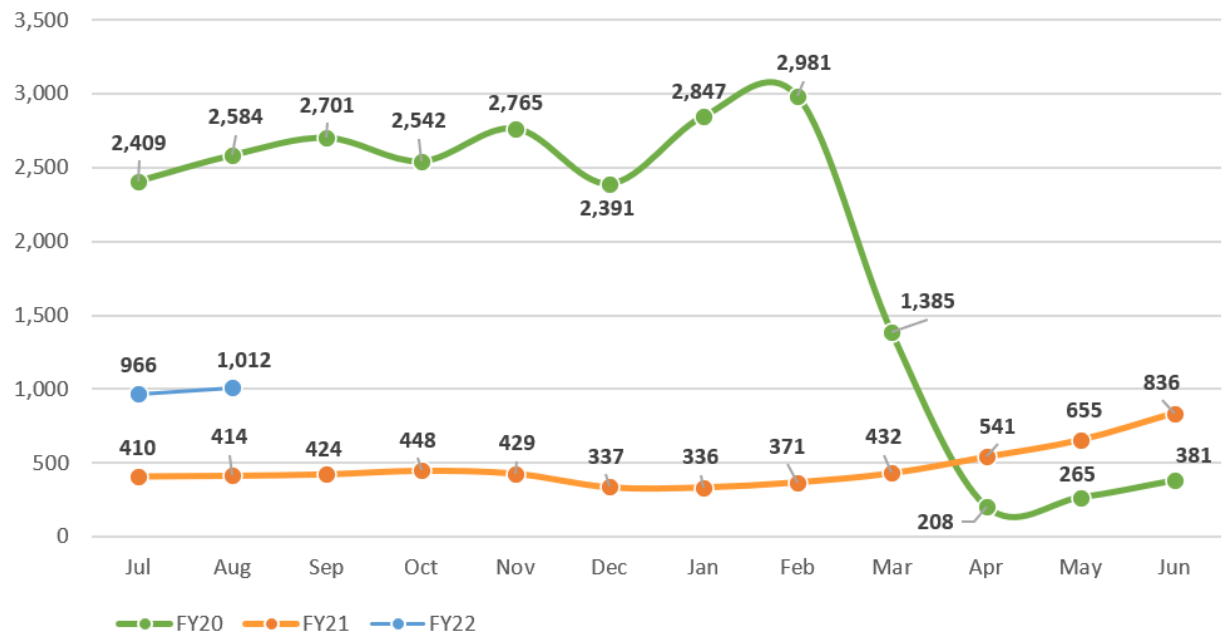
SMART FY20 - FY22 Monthly Ridership



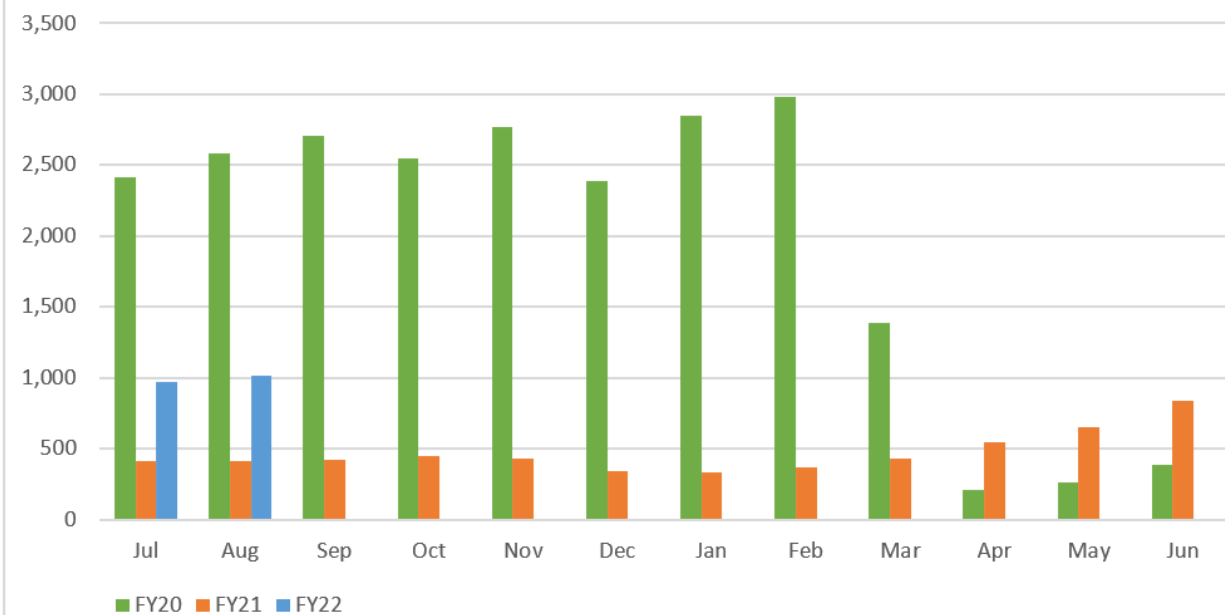
SMART FY20 - FY22 Monthly Ridership



SMART FY20 - FY22 Average Weekday Ridership



SMART FY20 - FY22 Average Weekday Ridership



MULTI-USE PATHWAY PROJECT CONNECTING STATIONS

Sonoma County Pathway Gap Closure Project- \$13.5M

- South Point Boulevard in Petaluma to Main Street in Penngrove (2.9 mi)
- Golf Course Drive in Rohnert Park to Bellevue Avenue in Santa Rosa (2.8 mi)

The design team is focusing on:

- Finalizing at-grade crossing applications for submittal to the local jurisdictions and the California Public Utilities Commission (CPUC).
- SMART is in the process of submitting the environmental applications permit package to the regulatory agencies.
- The consultant design team is preparing the final construction documents.
- SMART and the City of Petaluma are coordinating elements of the North McDowell Boulevard to reconstruct the street and the SMART Pathway Projects.



The Environmental Consultant team is evaluating a potential riparian mitigation site

Marin - Sonoma County Pathway Design and Permitting: \$5.5M

- McInnis Parkway to Smith Ranch Road in San Rafael: 0.7 Miles
- Smith Ranch Road. to Main Gate Road in San Rafael: 2.65 Miles
- State Access Road. to Bay Trail Road in Novato: 1.4 Miles
- Hannah Ranch Road to South Side Novato Court in Novato: 1.09 Miles
- Grant Avenue. to Olive Avenue in Novato: 0.26 Miles
- Olive Avenue to Rush Creek Place in Novato.: 0.38 Miles
- Main Street. to E. Railroad Avenue in Santa Rosa: 1.48 Miles
- Joe Rodota Trail to 3rd Street: 0.05 Miles
- Guerneville Road. to Airport Boulevard in Santa Rosa: 4.6 Miles

The pathway segments are currently in the preliminary design phase and the SMART team is focusing on:

- Finalizing alignment and grade crossing concepts.
- Completing a draft request for proposal to hire a designer.



Future Pathway Location South of Main Gate Road in Novato

BLACKPOINT BRIDGE FENDER REPAIR

SMART and Lind Marine working to replace Blackpoint Bridge fender lights damaged during recent barge collision incident with fendering system.



Blackpoint Bridge Fender Light Repair

SAN RAFAEL CREEK RIPERIAN ENHANCEMENT PROJECT

The project fulfills permit mitigation requirements to restore riparian habitat along the San Rafael Creek in the City of San Rafael. This mitigation was required as part of the environmental permits for the Larkspur Extension Project.

The SMART team is focusing on:

- SMART issued a Request for Proposal to hire contractor
- A pre-Bid site visit was conducted with prospective contractors in the last week of August.
- SMART anticipates planting in the fourth quarter of the year.



Pre-Bid site visit at San Rafael Creek

HUMAN RESOURCE

CURRENT OPEN RECRUITMENTS:

- Engineer Conductor
- Vehicle Maintenance Technician
- Track Maintainer
- Track Maintainer II
- Accounts Payable Technician
- Purchasing Assistant

NEW PROMOTIONS/HIRES

- Hired one Controller Supervisor and Vehicle Maintenance Technician

INTERVIEWS

Interviews were held for the following positions:

- Storeroom Parts Clerk
- Laborer
- Engineer Conductor
- Track Maintainer
- Controller Supervisor
- Bridge Tender

REAL ESTATE

PRIVATE CROSSINGS

Staff is working on private crossings as asked.

PROPERTY ACQUISITIONS

Windsor Extension Project - Staff is working to close out the transfer of property to the County for the redesigned and rebuilt bus pullout on Airport Boulevard in Santa Rosa. Staff is finalizing work with utility companies on a variety of tasks on the new extension property.

North Coast Rail Authority (NCRA) - Staff is working on reviewing documents from NCRA on the properties that have been transferred to SMART as they come in. Staff retrieved copies of all leases NCRA says they have from NCRA on 8/24/2021. Staff has been made aware by NCRA that some leases are unexecuted. Staff has been alerted by tenants that they are still being invoiced even after the transfer in May and no communication has gone out to tenants to alert them of the change in ownership.

Track work – Research continues on property rights for both SMART and property owners regarding the location of track. Staff is looking at ownership on Beattie Lane in Novato and a parcel next to CVS on or Lakeville in Petaluma.

Pathway - Coordinating with the adjacent property owners, tenants, and local municipalities regarding relocation of facilities and/or utilities and securing any necessary land rights to accommodate the construction of the pathways and interim access and laydown area needs.

PROPERTY MANAGEMENT

Staff is continuing to research SMART's ownership, property rights of ingress and egress easements and current and necessary agreements along the Brazos Branch and newly acquired NCRA segments up north to MP 89.

Staff is continuing the title work for the proposed Non-Motorized Pathway Project and continuing to address a variety of requests from adjacent property owners. Staff is also managing leases, licensing agreements, easements, and/or current Master agreements for utility and telecommunications companies that are crossing SMART property.

LEASES

Staff has begun the process of looking at existing leases to determine what needs to be brought current. We have started with the ones which we were asked to review by accounting for billing amounts.

TITLE WORK

Miscellaneous as asked by Legal and Engineering for the Pathway.

SPECIAL EVENT REQUESTS:

Multiple Sclerosis Society- Waves to Wine Bike Ride, Rohnert Park/Santa Rosa- September 18/19, 2021- *POSTPONED UNTIL MAY 2022*

RIGHT OF ENTRY PERMITS ISSUED:

Dryco- City of Petaluma Repaving Project in multiple locations
PG&E- Yearly Vegetation Management for Gas Transmission Division
Danco Group of Companies- Sage Commons Project- 80 College Avenue- Santa Rosa
Ghilotti Construction- Storm Drain work – 80 College Avenue- Santa Rosa
AT&T – Scenic Avenue- Aerial crossing maintenance- Santa Rosa

STAFF IS CONTINUING WORKING ON ISSUING RIGHT OF ENTRY PERMITS/LICENSE WITH:

PG&E- Traffic Control for Gas Transmission- River Rd/Second St./ Fulton Rd.- Santa Rosa
PG&E- Tree removal for electrical- Rohnert Park
Comcast- Aerial crossing at Hopper St., Petaluma
Comcast- Fiber Optics maintenance at Smith Ranch Rd./North Avenue, San Rafael
PG&E- Gas Pipeline Maintenance- Manuel Drive- Novato
PG&E- Gas Regulator/Pipeline Installation/Easement- Fulton Yard- Santa Rosa/Fulton
PG&E- Yearly Vegetation Management for Electrical Division
PG&E- Gas Regulator Installation- Hart Lane- Santa Rosa/Fulton
County of Marin- Simmons Slough Water Management System
Fredric C. Divine Associates- 826 State Access Road/ 1385 N. Hamilton Pkwy- Novato
Marin County Flood Control – Installation of 3 pumps – Hwy 37
West Coast Solar Company – Solar Project – Lagunitas Brewing – Petaluma
Sonic – Numerous Access Permits issued for work on fiber optics lines.
Metro-MCI – request to connect to Sonic fiber line
COMCAST – Staff is still working to finalize outstanding license agreement fees. Fiber Optic installation verifications in 7 locations. Legal working on Master Agreement.
AT&T- Staff is working to finalize an update Master Agreement for maintenance of existing license agreements.

ON-GOING PROPERTY MANAGEMENT ACTIVITIES

License agreements for discovered local municipalities facilities on SMART Right of Way.
Annexation of Sewer Lines for 105 Roblar Drive, Novato has been executed.
Quitclaim deed research and request with Caltrans was approved by the CTC at August Meeting.
Records research for all Private and Public crossings – continued data base development.
Records research on Brazos Branch (Napa County – real estate records)
Records research for Healdsburg.
Work on Lease comparisons for updating all SMART leases.
Work on Appraisal values for various Healdsburg properties and PG&E easements.
Work with Accounting to get any past due Lessee's accounts up to date.
Research of records for old Petaluma, Santa Rosa Rail line spur in Petaluma – downtown trestle
Research of records for Healdsburg Station – environmental records researched
Staff is continuing to work with Pacific Gas & Electric Company to refine access issues and update Master Agreement with after discovered facilities.
Consulting with Engineering on costs.
Continue to handle property management issues from adjacent landowners.
Continue to support construction by doing property research for discovered property issues.
Research property ownership for homeless encampments on Right of Way.
Research on title issues to clarify property ownerships and survey as necessary to continue working with property owners to remove encroachments.
Field work visiting SMART owned properties.

GRANTS, LEGISLATION, PLANNING AND REGIONAL ACTIVITIES

REGIONAL AND LOCAL PLANNING ACTIVITIES

Local Planning Department Notification and Coordination Tracking: SMART Planning Staff also tracks and reviews all notices sent by local jurisdictions for projects occurring adjacent to or nearby the railroad tracks. In 2021 to date SMART has received and reviewed **28** different notices while in 2020 through August SMART received **84** notices.

State Route 37 – Planning Processes Underway:

- SR37 Policy Committee (Resilient SR37);
- SR37 Caltrans Planning and Environmental Linkages Study (SR37 PEL Study);
- US 101-SR 121 Environmental & Design Alternative Analysis (DAA), now merged with PEL;
- SR37 Caltrans Comprehensive Multi-Modal Corridor Plan (SR37 CMCP);
- Sears Point to Mare Island (Congestion Relief) – Environmental Impact Report Scoping.

A quarterly **State Route 37 Policy Committee (Resilient 37)** meeting took place in January 2021, with the next meetings of the group scheduled for Fall 2021. The Joint Baylands Core Team and Resilient 37 Project Leadership Team have been meeting to provide technical support of the Resilient 37 Policy Committee, most recently on July 16, 2021, with SMART staff invited and a discussion of SMART's future on the corridor scheduled as an agenda item.

The **SR37 Planning and Environmental Linkages (SR37 PEL) Study** meetings are taking place approximately quarterly the most recent meeting included a discussion of The US101 to SR121 Design Alternative Analysis (DAA), which has been merged with the SR37 PEL Study, on July 30, 2021. At the meeting, input was received on a draft purpose statement and on the DAA alternatives for State Route 37 future alignment alternatives. Staff met with MTC and PEL consultant staff on August 12, 2021, to give input on the alignment alternatives, and submitted written comments on August 16, 2021. Comments were also submitted to Caltrans on the draft SR37 State Route Congestion Management Plan (CMCP) on August 12, 2021.

SMART staff has been asked to present to the Quarterly PEL meeting September 24, 2021, on SMART's activities along the corridor.

TRANSIT COORDINATION MEETINGS

- **August 1, 8, 22 & 29 - 2021** – Bay Area Transit Operator ongoing coordination meetings. SMART staff met with the Bay Area’s smaller transit operators, defined as any except the seven largest transit operators, weekly. This month’s focus was on selection of small transit operator representatives to the Regional Network Manager Advisory Committee. SMART’s Executive management volunteered to represent smaller transit operators at that committee. Discussions are ongoing on final committee composition and representation. Additional topics included MTC presentation on their strategy for endorsement on upcoming State funding cycles (Transit and Intercity Rail Capital Program to be addressed first in September 2021) and approach to updating MTC endorsement of any “mega-regional” proposed capital and rail projects.
- **August 4, 2021** - Staff participated in the Metropolitan Transportation Commission (MTC) monthly **Transit Finance Working Group** meeting. Discussions included several standing item updates including legislative, funding notices, State Transit Assistance fund estimate and Transportation Improvement Program updates.
- **August 19, 2021** – SMART staff attended a coordination meeting for the Marin-Sonoma Bikeshare Program, centered around SMART stations. Discussed were space allocations, processes, concerns, and technical specifications.

GRANT ACTIVITIES

American Rescue Plan (ARP): The Federal American Rescue Plan (ARP) was passed on March 11, 2021. The Federal Transit Administration (FTA) posted the apportionment table on March 29, 2021, for the Section 5307 funds for distribution to Urbanized Areas across the nation for transit use. The Bay Area will receive \$1.7 billion, directed to the multiple urbanized areas that comprise the Bay Area, of which \$1.3 billion will be directed to transit operators reporting to the San Francisco-Oakland urbanized area. \$2 million was apportioned to the Petaluma urbanized area and \$27 million was apportioned to transit operators reporting to the Santa Rosa urbanized area, including SMART.

MTC has commenced its process to re-distribute the FTA apportionments. A partial first tranche allocation of these funds is expected at their July 28th Commission meeting and MTC staff recommended apportioning a first tranche of \$9.3 million to be divided between SMART, Santa Rosa CityBus, Sonoma County Transit, and Petaluma Transit. Subsequent allocations will be completed at a time and scale to be determined later, with likely allocations in September and/or December 2021.

Affordable Housing Sustainable Communities (AHSC): SMART, the City of Petaluma and Danco Communities have partnered on the submittal of a joint application for construction of the second Petaluma infill SMART station, SMART Pathway improvements across McDowell Boulevard, bicycle and pedestrian improvements on McDowell Boulevard and construction of 131 affordable housing units (Meridian at Corona Station). SMART would receive \$8.5 million from the grant, if awarded, with SMART providing \$2 million in matching funds, as recommended in SMART’s Capital Plan, and Petaluma providing \$2 million in matching impact fees for the station construction.

On June 23, the Metropolitan Transportation Commission endorsed all applications that were submitted for Bay Area projects, including this SMART/Petaluma/Danco proposal. Awards will be announced in October.

Rebuilding American Infrastructure with Sustainability and Equity (RAISE): The U.S. Department of Transportation has released a Notice of Funding Opportunity (NOFO) to apply for \$1 billion in Fiscal Year 2021 discretionary grant funding through the Rebuilding American Infrastructure with Sustainability and Equity (RAISE) grants. RAISE, formerly known as BUILD and TIGER, will provide maximum awards of \$25 million, with no State being awarded more than \$100 million in total. This program is highly competitive with approximately 7% of requests being funded.

The State of California (Caltrans) has selected three projects to be official State submittals for the RAISE competition and the SMART Windsor Extension Project is one of those three submittals. Caltrans submitted the application by July 12, 2021. There is no public date issued for an expected announcement on grant awards.

SAFETY AND SECURITY



Trespasser between Haystack Bridge and Downtown Petaluma



Trespasser on tracks - Petaluma



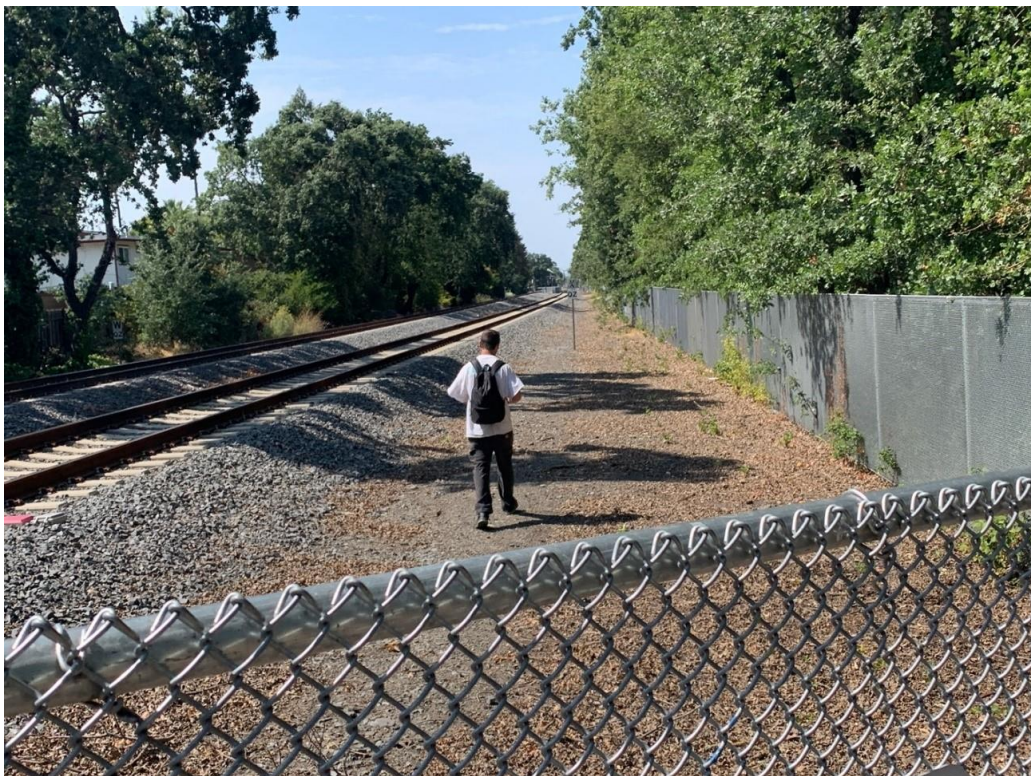
Trespasser on tracks - Petaluma



Trespasser along track near Caulfield Lane



Trespasser along tracks - West Payran, Petaluma



Trespasser along track between Steele lane and Jennings, Santa Rosa