

Agenda Item 8: Petaluma North Station & Pathways Project

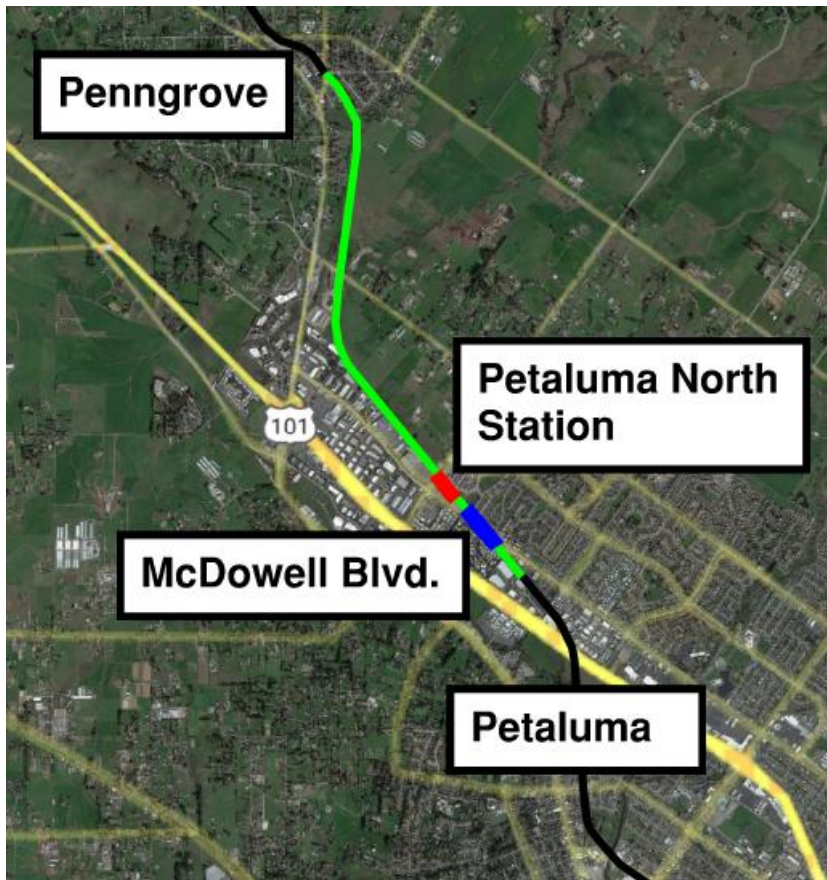


January 4, 2023

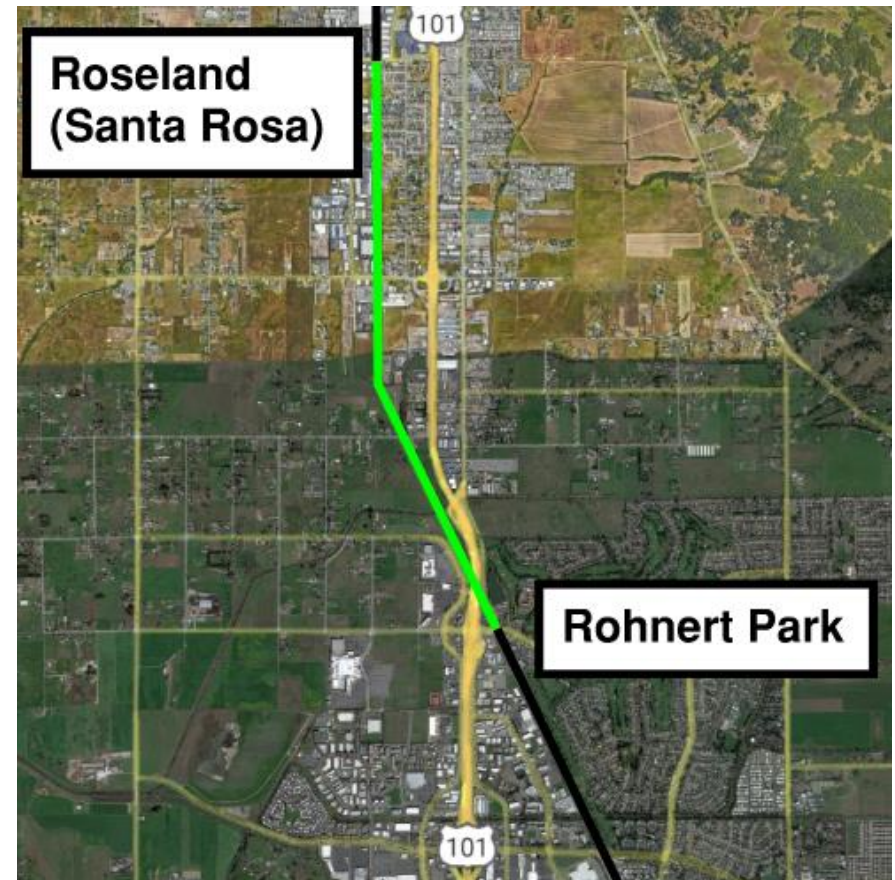
Petaluma North Station & Pathways Project

- 1. Petaluma North Station (@Corona Road)**
- 2. North McDowell Blvd. Grade Crossing Reconstruction**
- 3. Pathway – Southpoint Blvd. to Main St. (2.9 miles)**
(Petaluma to Penngrove)
- 4. Pathway – Golf Course Dr. to Bellevue Ave. (2.7 miles)**
(Rohnert Park to Santa Rosa)

Petaluma North Station & Pathways Project

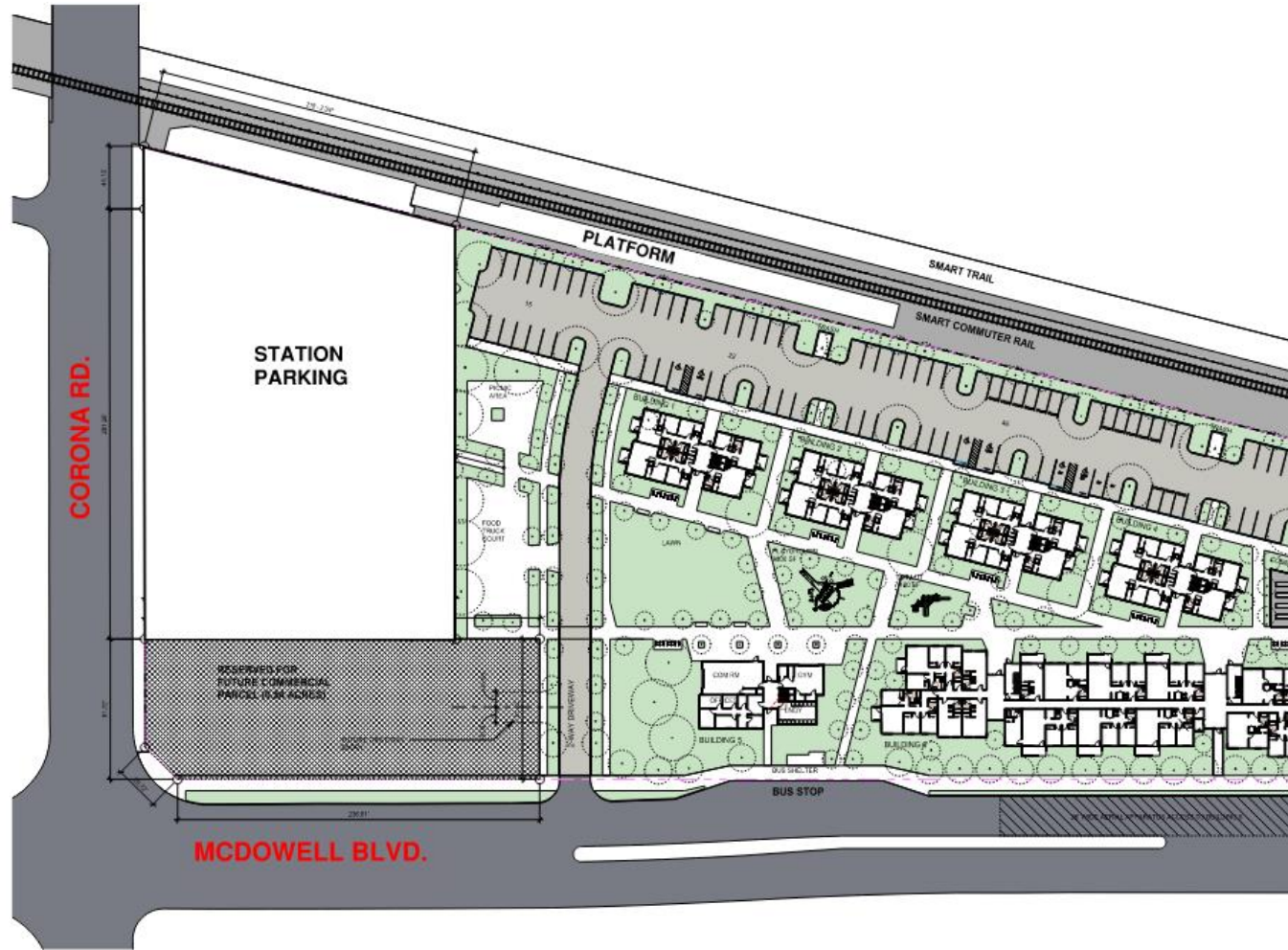


Upon completion of the Southpoint Blvd. to Main St. path there will be continuous path from Lakeville St. in Petaluma to Main St. in Penngrove (4.3 miles)



Upon completion of the Golf Course Dr. to Bellevue Ave. path there will be continuous path from Railroad Ave. south of Cotati to Guerneville Rd. in Santa Rosa (10.5 miles)

Petaluma North station



1 SITE PLAN-FULL
1" = 40'-0"

Questions?

Connect with us:

www.SonomaMarinTrain.org



Customer Service:

CustomerService@SonomaMarinTrain.org

(707) 794- 3330

