

General Manager's Report

November 16, 2022



General Manager's Report

- Emergency Bridge Repair (Brazos Branch)
- Ridership
- Caltrans Visit
- Toy Drive
- Employee Promotions
- Questions

Emergency Bridge Repair (Brazos Branch)

November 2, 2022 - Board approved emergency contract (Agenda item A) and its companion, Resolution No. 2022-37

As required by Public Contract Code, the Board of Directors must review the emergency action at its next regularly scheduled meeting and thereafter.... at every regularly scheduled meeting until the emergency action is terminated.

Emergency Bridge Repair (Brazos Branch)

Contractor: Koppers Railroad Structures, Inc

Initial work to get the bridge passable was completed last Friday, November 11, 2022

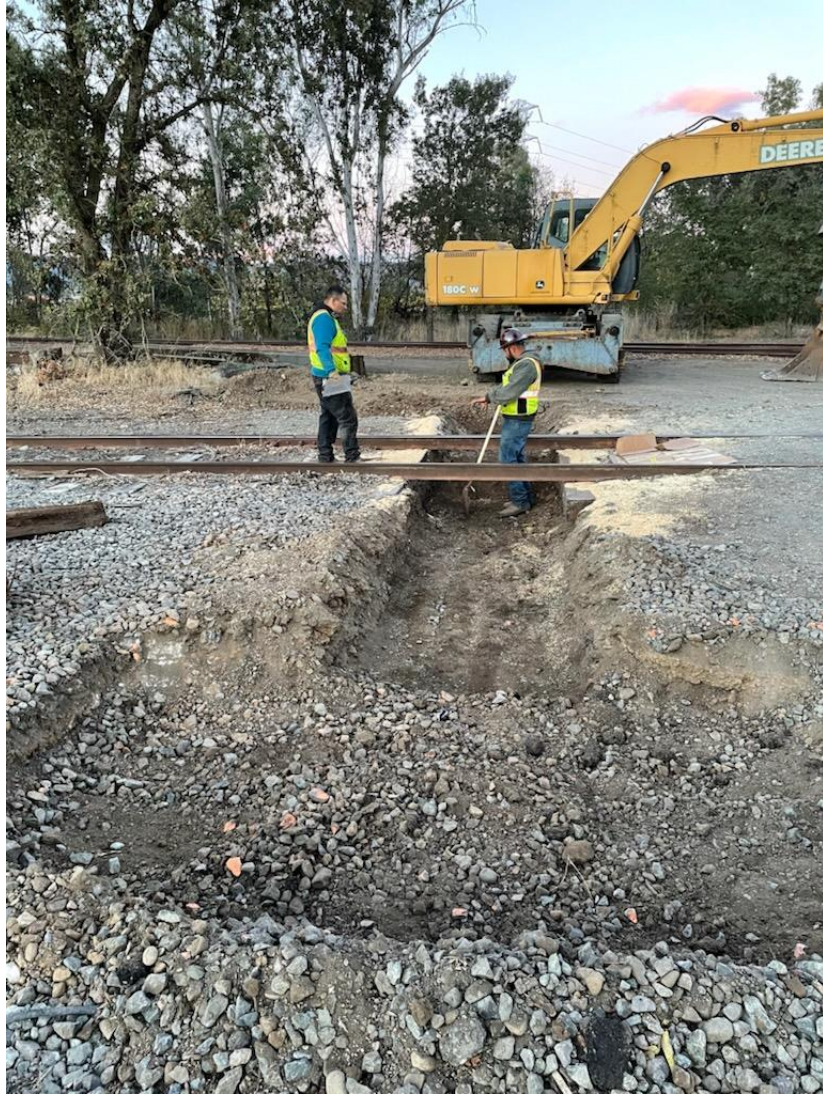
- Work consisted of replacing pile bent caps and two stringers (beams)
 - Temporary work so that we can operate across the bridge
- Long-lead bridge timbers ordered and expected to arrive in January 2023

Contractor will return to make permanent repairs in January/February timeframe

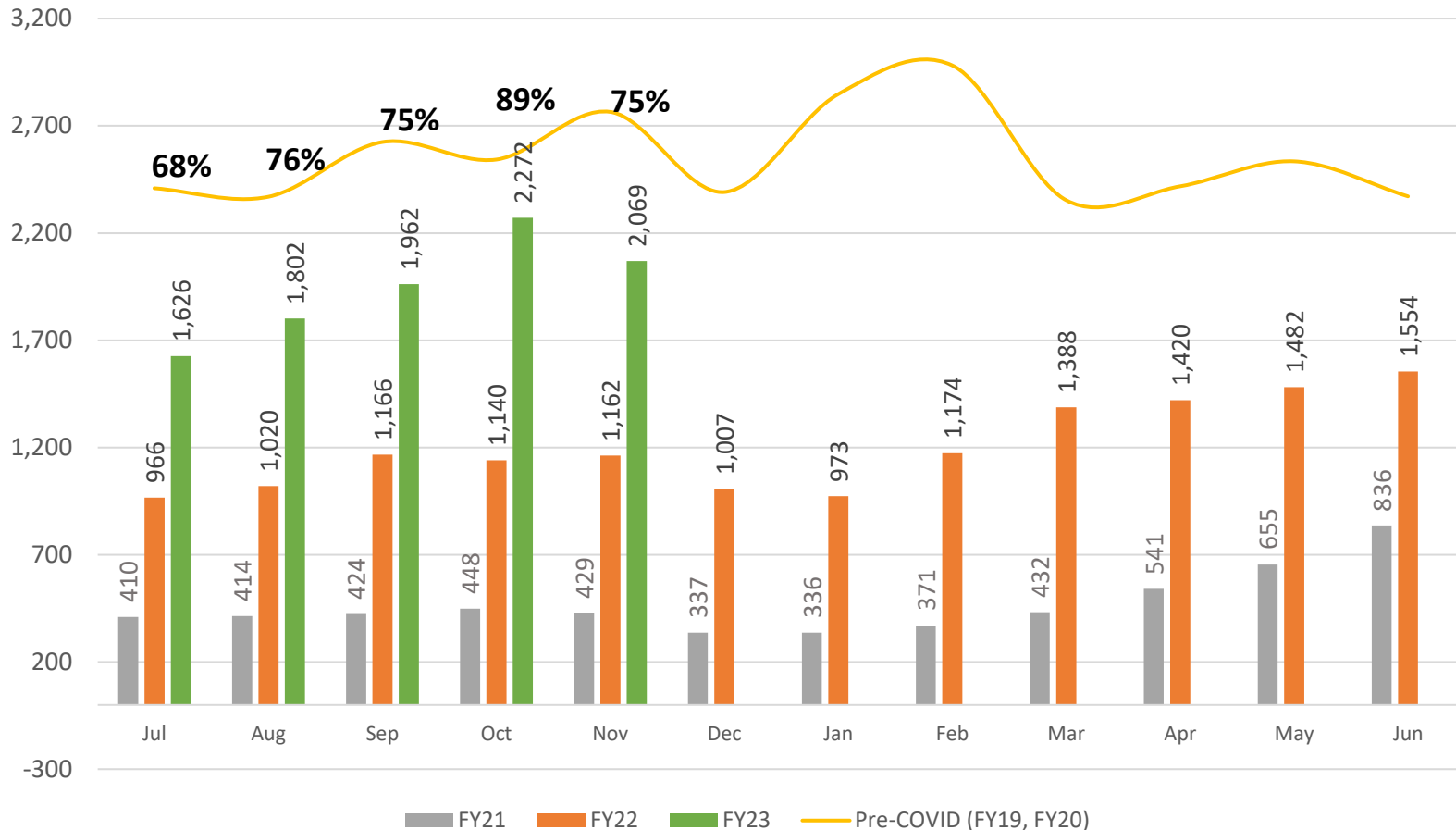
Emergency Bridge Repairs (Brazos Branch)



Emergency Bridge Repairs (Brazos Branch)



Average Weekday Ridership



November Avg Weekday ridership down 9% from October

- 75% of pre-COVID average, up 78% over November 2021



Caltrans Visit



SMART Toy Drive 2022



Saturday, December 3, 2022

- Collecting toys on the train
- Toy as fare
- All donated toys go to Toys for Tots Campaign
- Santa will be riding the train this year!

Employee Promotions

Newly Promoted Engineers

Marcus A. Cortez

- Hired as Conductor September 2021
- Promoted to Engineer October 2022



Employee Promotions

Newly Promoted Engineers

Steve Baptist

- Hired in MOW September 2017
- Promoted to Conductor in June 2021
- Promoted to Engineer October 2022



Employee Promotions

Newly Promoted Engineers

Carlos Aroche

- Hired in Vehicle Maintenance February 2018
- Promoted to Conductor June 2021
- Promoted to Engineer October 2022



Questions?

Connect with us:

www.SonomaMarinTrain.org



Customer Service:

CustomerService@SonomaMarinTrain.org

(707) 794- 3330

