

Agenda Item 4 - General Manager's Report January 17, 2024



General Manager's Report

- Contracts/Procurements over \$100K
- COC Vacancies
- Updates
 - Pathway Litigation
 - Ridership
 - Pathway Counts
 - Windsor Extension Construction
 - Clipper START
 - Coordination and Regional Planning
 - 2024 Strategic Plan
- Febrewary Promotion
- Questions

Contract/Procurements over \$100K

AMENDMENTS / CHANGE ORDERS					
CONTRACT # / PO #	COMPANY NAME	ACTION	DESCRIPTION	AMOUNT INCREASE	NEW AMOUNT
CV-BB-23-002	Ghilotti Bros., Inc.	Change Order No. 03	Construction of Non-Motorized Pathway from McInnis to Smith Ranch Road	\$16,642.00	\$3,557,774.32

- Change Order No. 03 – Agreement No. CV-BB-23-002 – Ghilotti Bros., Inc.
- Construction of the McInnis to Smith Ranch Road Non-Motorized Pathway construction project and is for the installation of additional LED enhanced signage at the San Rafael Airport crossing.
- This Change Order increases the contract not-to-exceed amount by \$16,642.00 for a new total contract not-to-exceed amount of \$3,557,774.32.

Contract/Procurements over \$100K

CONTRACTS / PURCHASE ORDERS

CONTRACT # / PO #	COMPANY NAME	ACTION	DESCRIPTION	AWARD AMOUNT
OP-SV-23-004	Balfour Beatty Infrastructure, Inc.	Agreement	Track surfacing, alignment, and ballast restoration at various locations along SMART's mainline track.	\$189,407.75

- Agreement OP-SV-23-004 – Balfour Beatty Infrastructure, Inc.
- Project includes track surfacing, alignment, and ballast restoration at various locations along SMART’s mainline to maintain ride quality and to ensure compliance with FRA track geometry tolerances.
- Agreement has a not-to-exceed amount of \$189,407.75



COC Vacancies

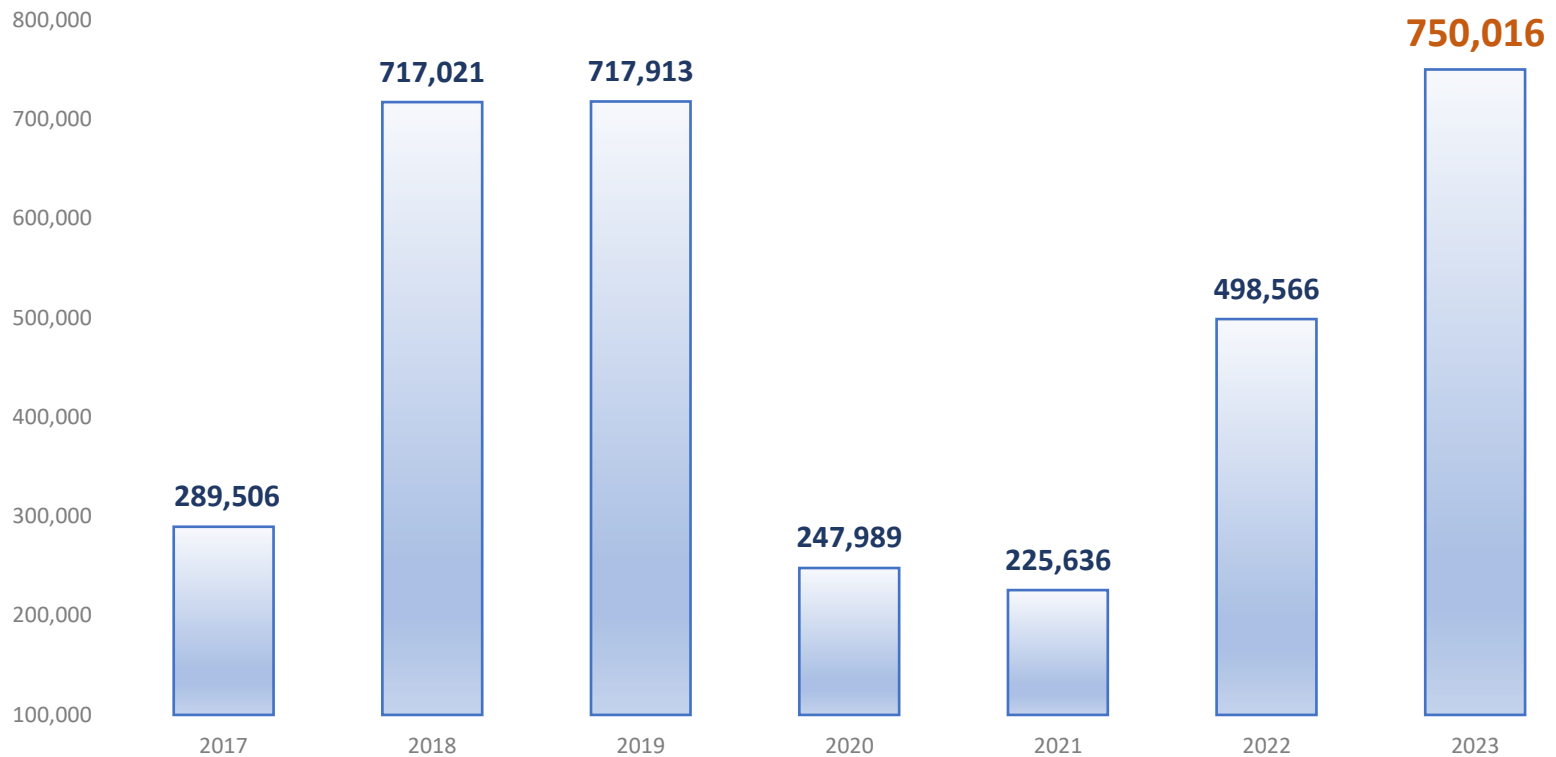
- Initial COC appointments utilized staggered terms of 1,2, and 3 years
- Three COC appointments expire May 31, 2024
- Staff will advertise vacant positions through February 29th
- Staff will be requesting Board to establish an Ad Hoc Committee to review applicants and recommend appointments
- Recommendations presented to the Board in April
- Nominating Sonoma and Marin organizations may include:
 - Local financial, business, or taxpayer organizations
 - Environmental, voting, and transit advocacy groups
 - Major employers
 - Organizations representing seniors, veterans, and persons with disabilities
 - Advocacy groups representing bicyclists, pedestrians, and passengers
 - School districts and colleges (parents and educators)
 - Disadvantaged communities, minority groups, and civil rights organizations

Pathway Litigation

- Pathway litigation has been successfully resolved
- SMART tendered the litigation to its insurance carrier
- Lawsuit initially had 130 Plaintiffs, but Court later dismissed around 100 claims
- Insurance carrier determined it was more cost effective to resolve the matter before trial
- NO SMART funds were used to settle the lawsuit
- SMART will continue to assert it is authorized and appropriate to continue to build pathways connecting our stations along the SMART rail corridor

Ridership Recovery

SMART Annual Ridership (CY)



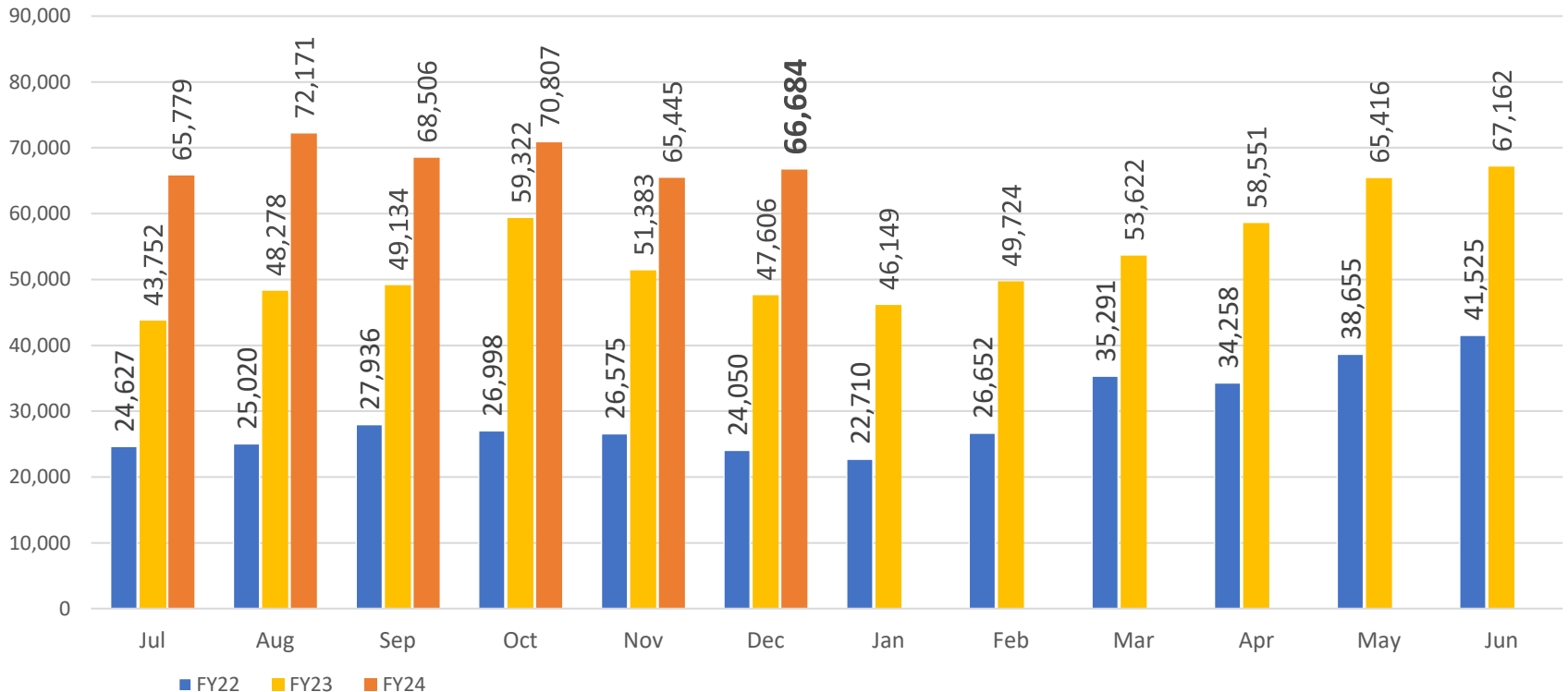
- Set all-time monthly ridership records 7 of 12 months in 2023
- CY23 ridership 4.5% higher than CY19



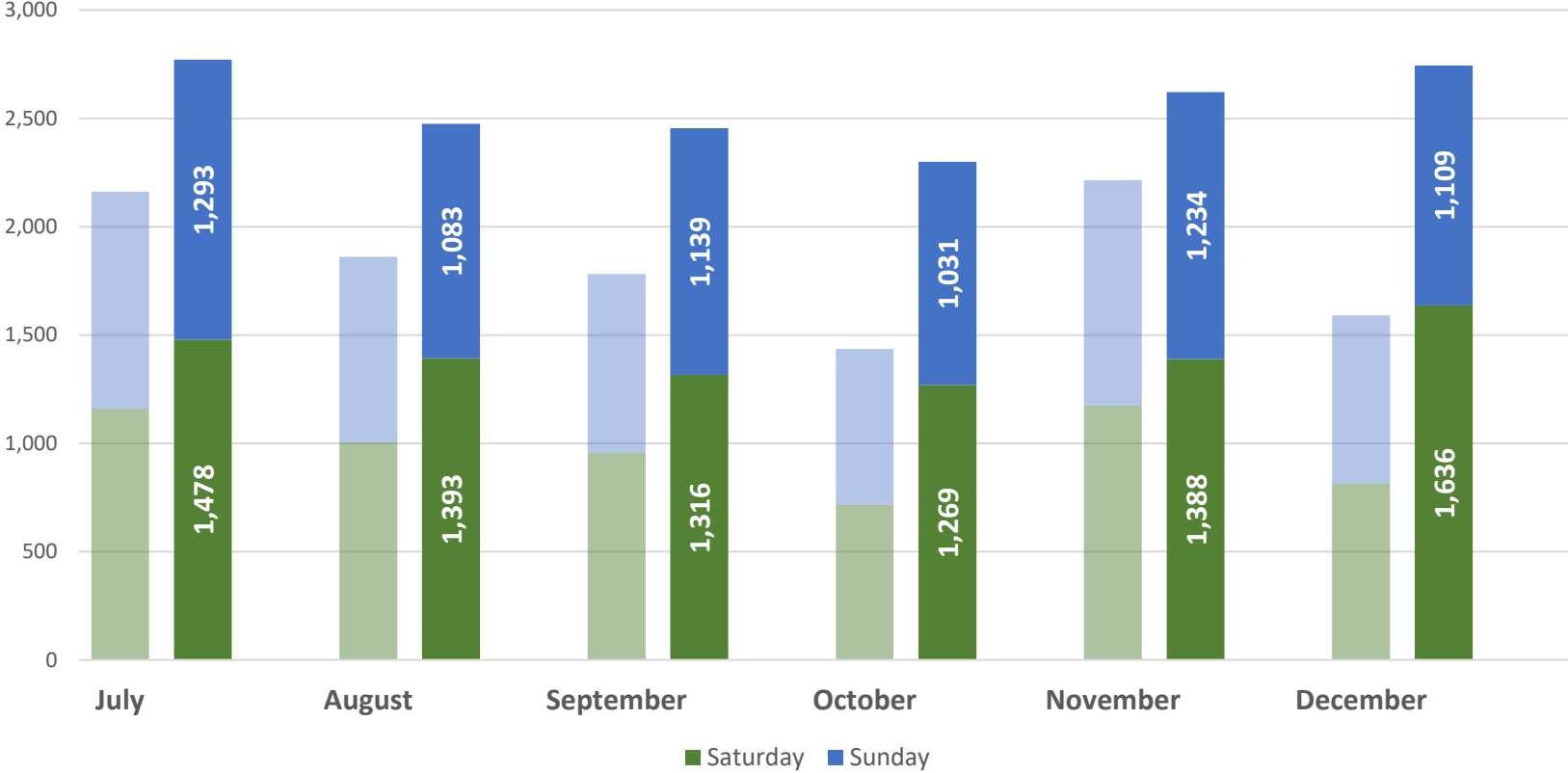
Monthly Ridership

December Ridership = 66,684

- 40% over Dec 2022
- 15% over Dec 2019 (pre-COVID)



Weekend Ridership (FY19 v FY24)



December average weekend boardings up 74% over FY19 (pre-COVID)



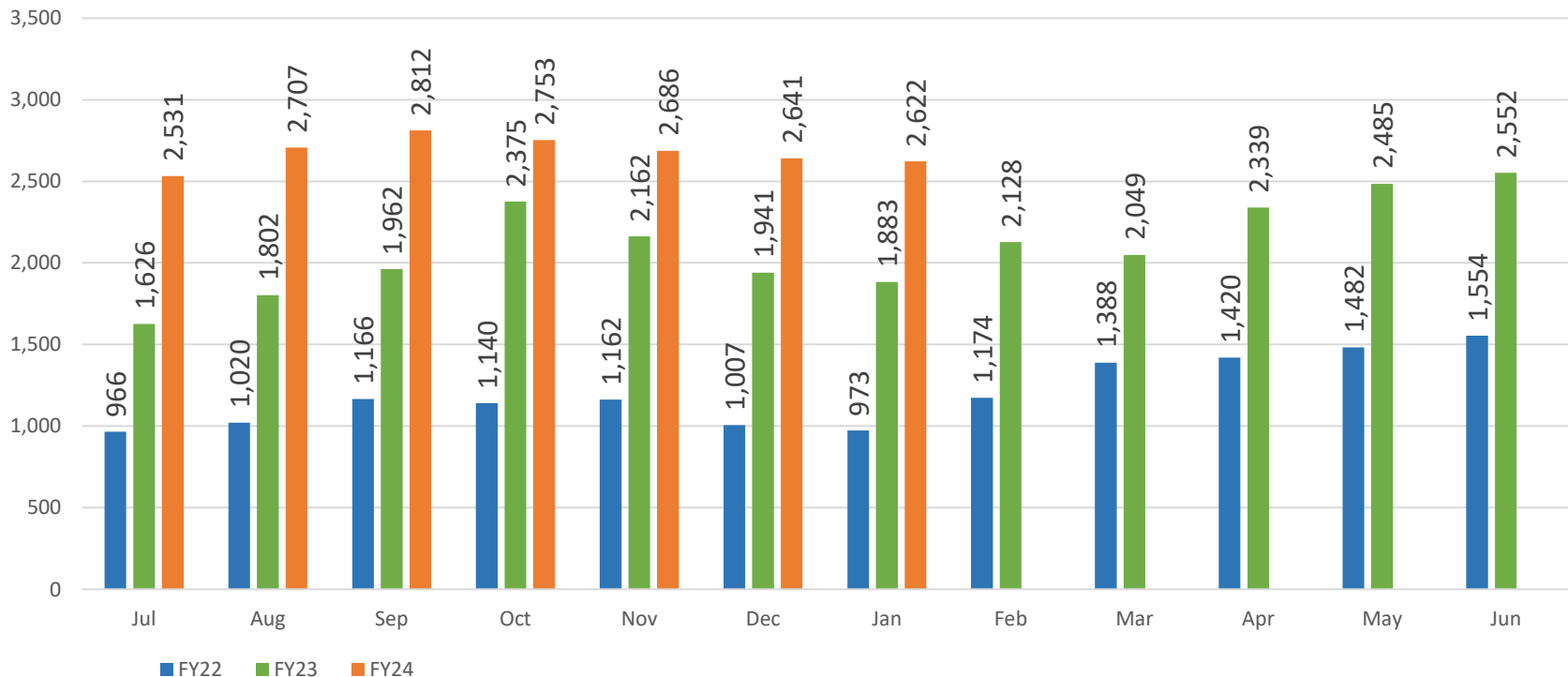
Average Weekday Ridership

December Average Weekday ridership: 2,641

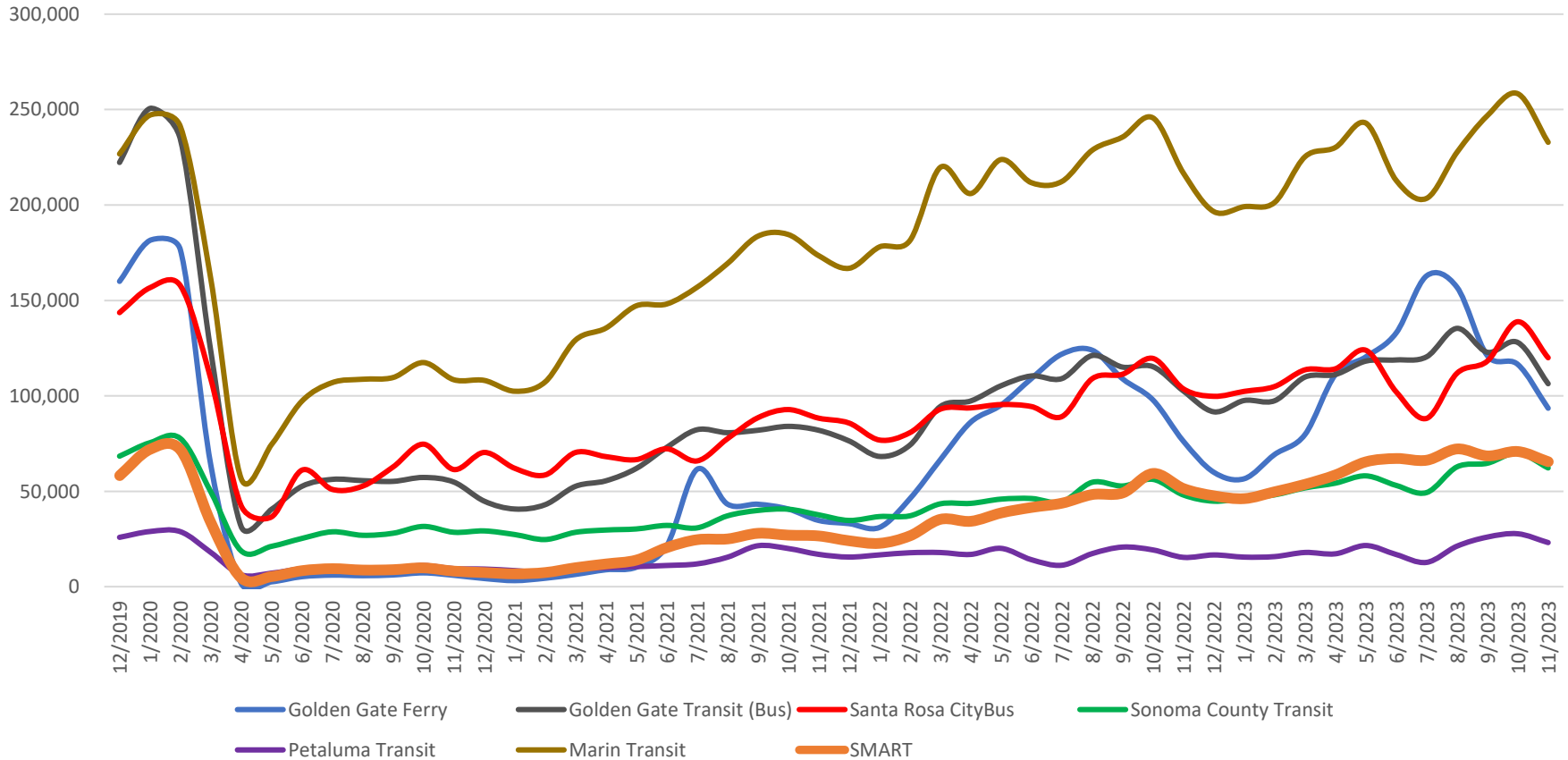
- 36% higher than Dec 2022

January Avg Weekday ridership to date: 2,622

- 39% higher than Jan 2023



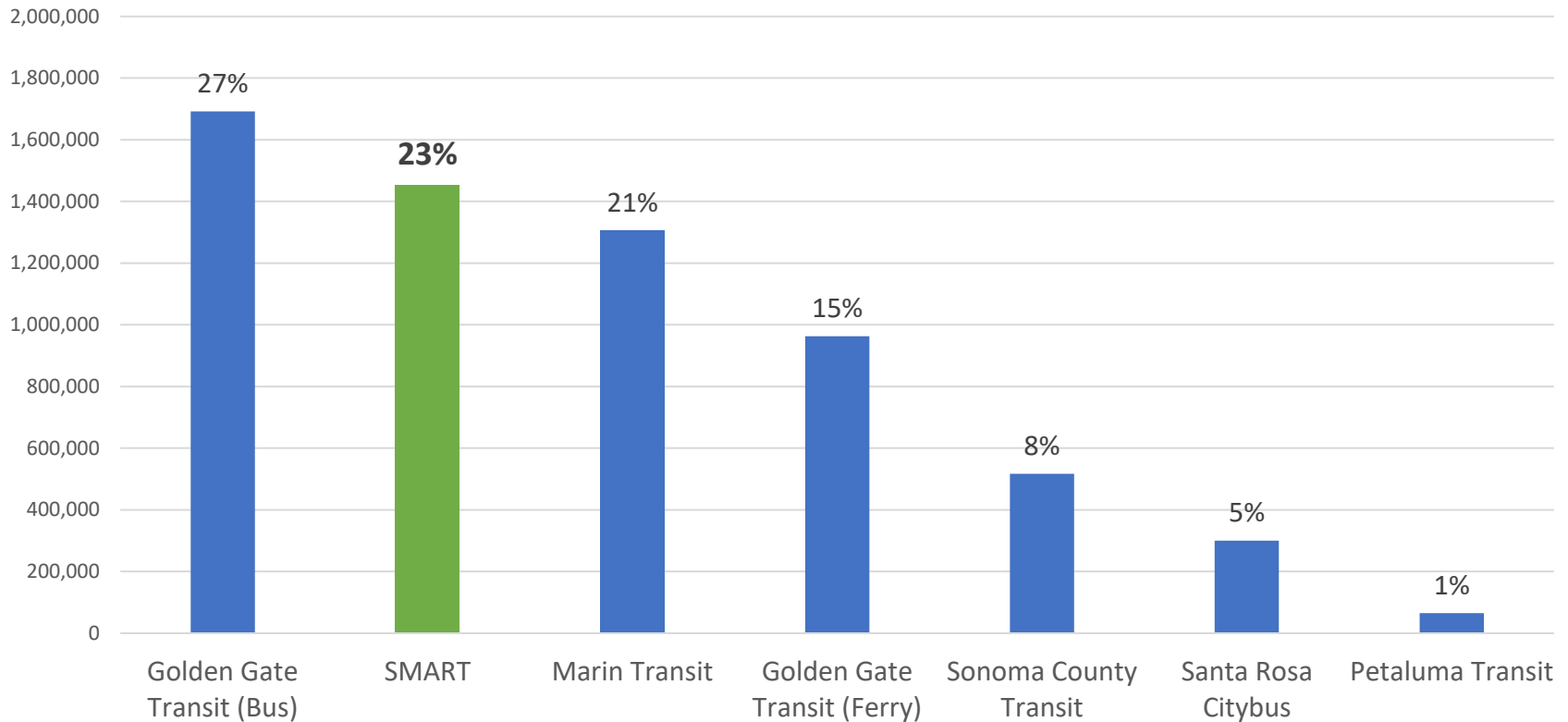
Marin-Sonoma Monthly Ridership (Nov)



- SMART served 65,445 riders in November
- 5th highest in Marin/Sonoma



November Passenger Miles Traveled



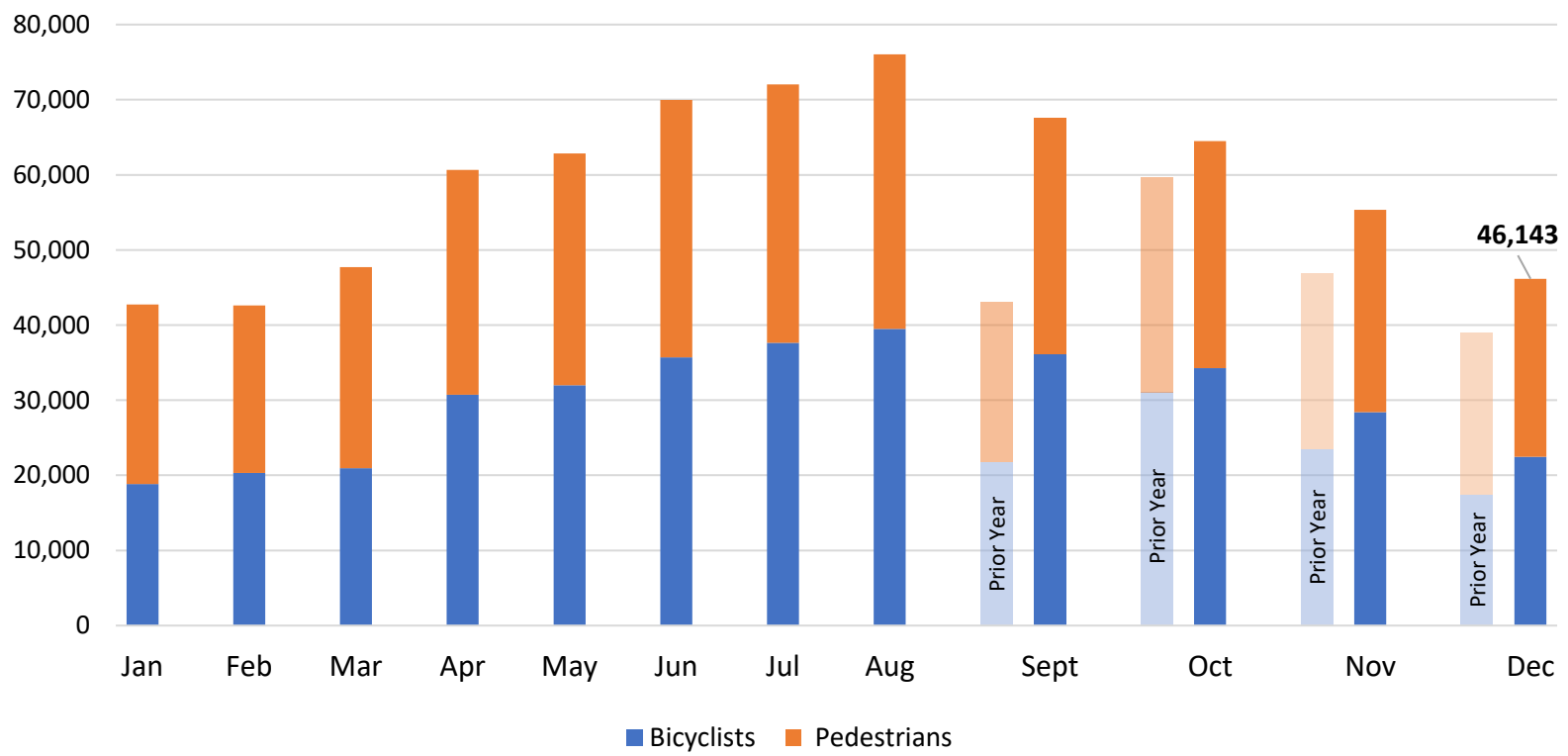
- 23% of total and 2nd highest in Marin/Sonoma
- SMART carried over 1.4 million passenger-miles in November



Pathway Counts

September 2022 –December 2023

18% more than prior year



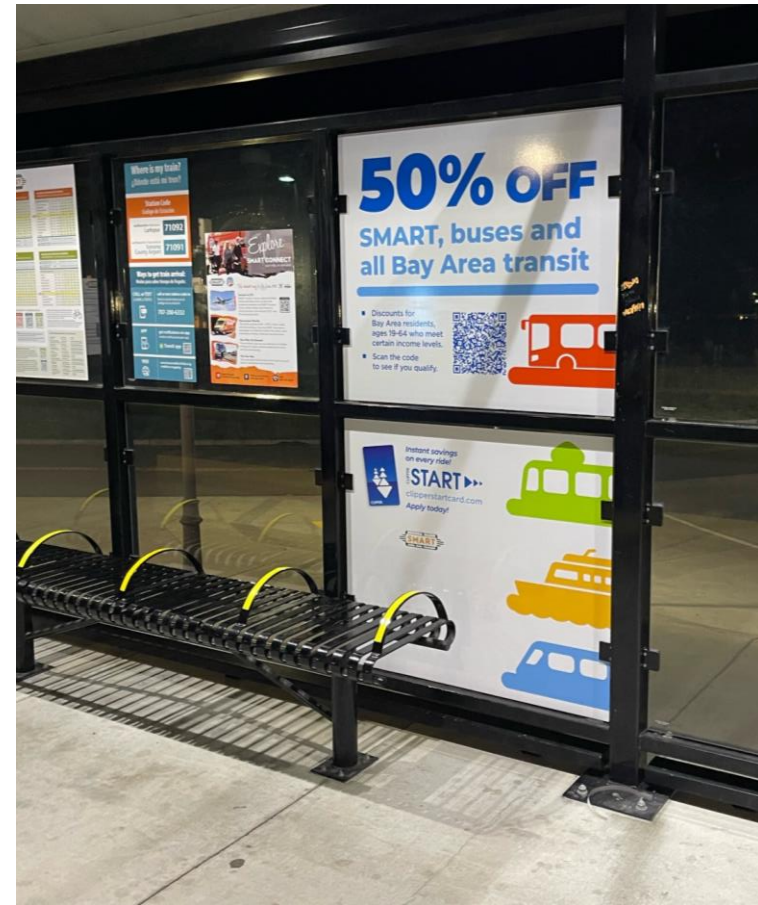
Windsor Extension Construction



- Setting pre-cast concrete bridge decks for the railroad bridges
- This is the first of four creek crossings
- The contractor is setting bridge decks through the month of January

Clipper START Update

- To support the MTC's renewal of the Clipper START program, SMART posted Clipper START Ads on our platforms
- Clipper START offers a 50% discount on single ride tickets for low-income adults
- SMART continues to promote the program and has seen modest growth in participation
- Over 10,000 START boardings since the program began



Santa Rosa Citybus Coordination



- SMART meets regularly with Santa Rosa Citybus to improve coordination
- Identified the need for a new westbound stop at the Santa Rosa North SMART station
- Stop installed by Citybus in December
- Offers a better connection from Coddington and to SW Santa Rosa
- Served by CityBus Route 15 hourly and has received AHSC funding to increase frequencies

Regional Planning Projects

SMART staff are involved in coordination efforts at the local and regional level, including:

- MTC Plan Bay Area 2050+
- MTC TRANSFER Plan
- MTC Regional Mapping and Wayfinding Project
- Marin-Sonoma Coordinated Transit Service Analysis
- TAM's Marin County Transportation Plan
- Santa Rosa General Plan Update
- City of Cotati's Santero Way Specific Plan Update

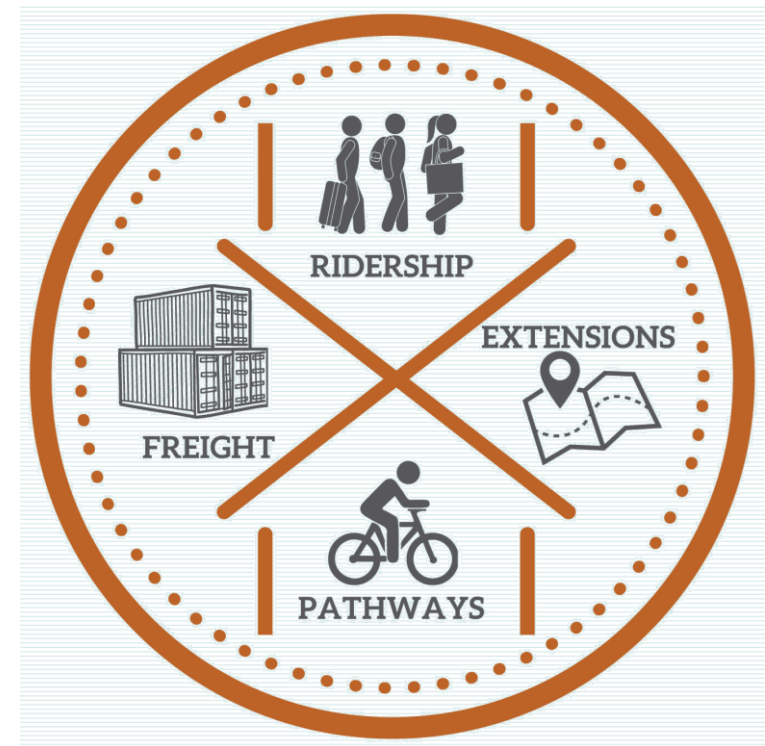


Strategic Plan – Community Workshops

SMART's Strategic Plan Workshops will kick off on January 31st on Zoom, with an interactive SWOT Analysis (Strengths, Weaknesses, Opportunities & Threats) and a fresh look at our Strategic Objectives.

Workshop Schedule

- Jan 31 SWOT Analysis
- Feb 7 Ridership
- Feb 28 Pathways
- Mar 14 Extensions
- Mar 27 Freight



Additional Information:

<https://www.sonomamarintrain.org/Strategic-Plan>



Tracks to Taps



ALL ABOARD SMART FOR FEBREWARY 2024

- Visit Santa Rosa offering **Beer Passport** with activities/prizes for participants
 - Brewers in Santa Rosa will offer **free shuttle service** on Saturdays in February to select breweries
 - Shuttle will serve SMART's Santa Rosa Downtown station.
- Several brewers in **San Rafael and Novato** hosting FeBREWary themed events.
- And this year, visitors will be able to catch the **SMART Connect** shuttle at the Sonoma County Airport station to visit breweries near Windsor.



Questions?

Connect with us:

www.SonomaMarinTrain.org



Customer Service:

CustomerService@SonomaMarinTrain.org

(707) 794- 3330

