

Citizens Oversight Committee Meeting

Agenda Item 4 - General Manager's Report

March 13, 2024



General Manager's Report

- COC Member Selection Process
- Ridership
- Construction Update
- Partial System Closure
- Free Fare Pilot Program
- Questions

COC Member Selection Process

- To provide staggered terms, initial appointments were established for one, two, or three years.
- Appointment for three members expires in May 2024
- Vacancies advertised Jan 18th – Feb 29th
- SMART received 17 applications
 - Including two current members
- April 3rd – request Board appoint Ad Hoc Committee
 - Evaluate applications
 - Make recommendation to full Board April 17th for approval by SMART Board of Directors
 - Selected members will serve a term of three years
- New/reappointed COC members will attend May 22nd meeting



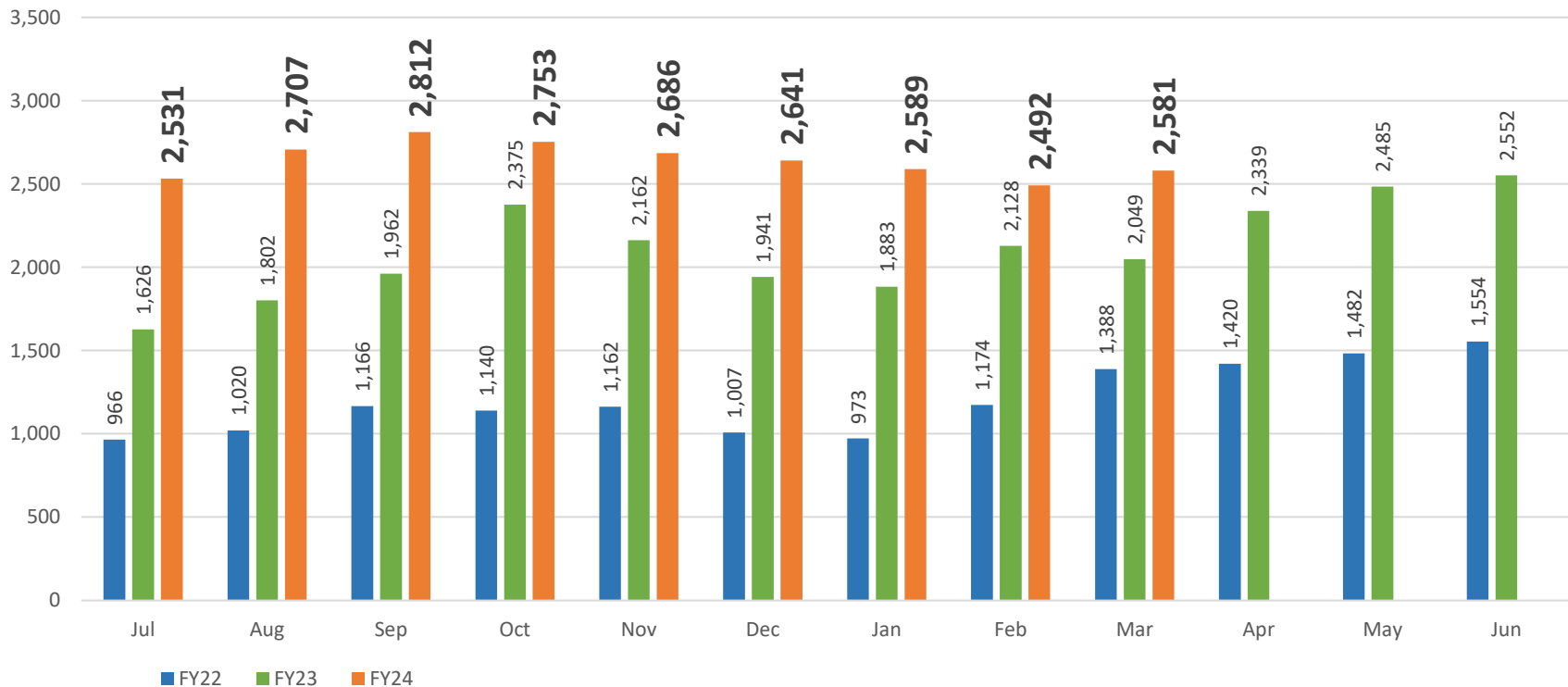
Average Weekday Ridership

February avg weekday ridership: 2,492

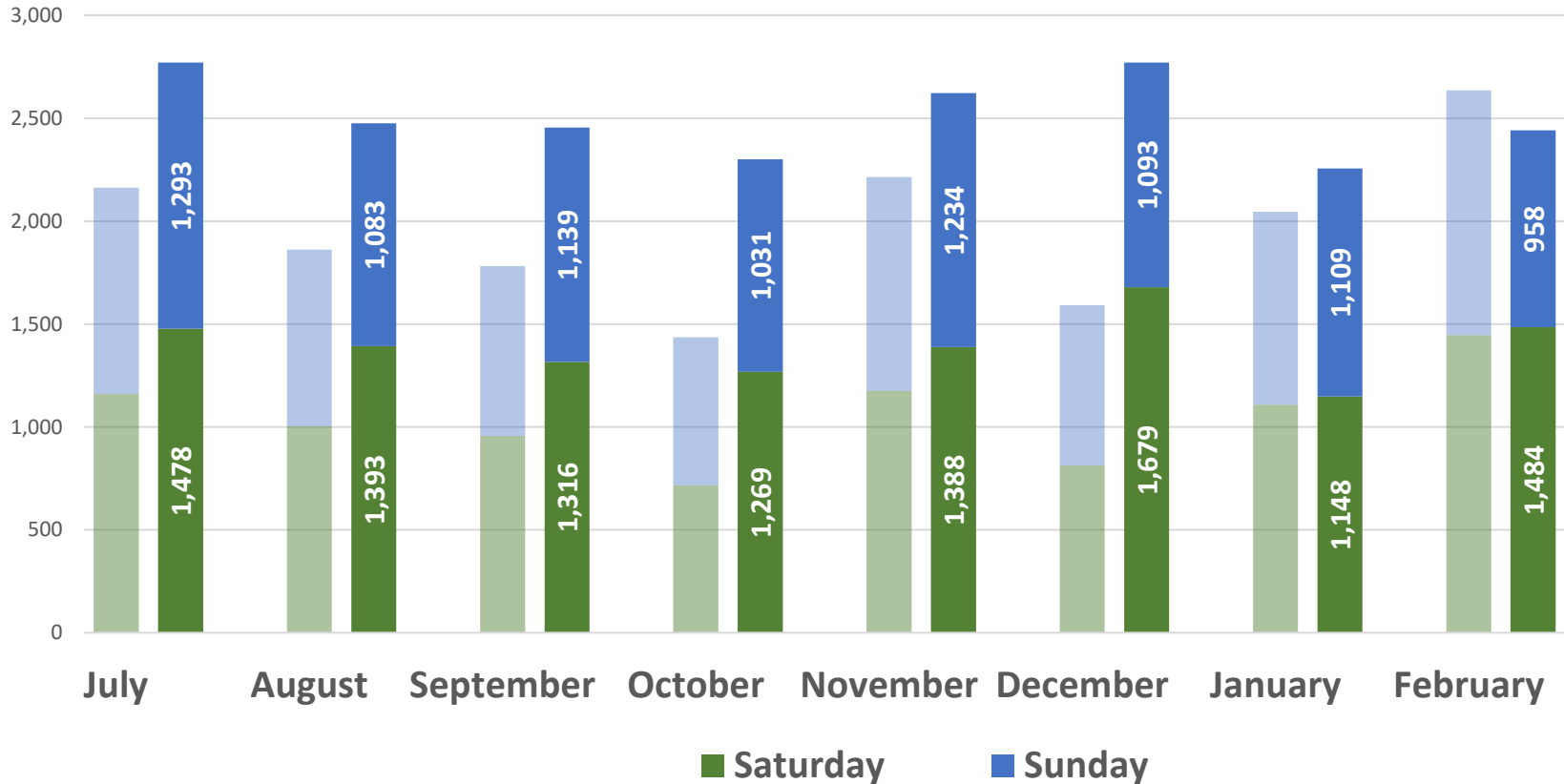
- 17% higher than February 2023

March avg weekday ridership to date: 2,581

- 26% higher than March 2023



Weekend Ridership (FY19 v FY24)



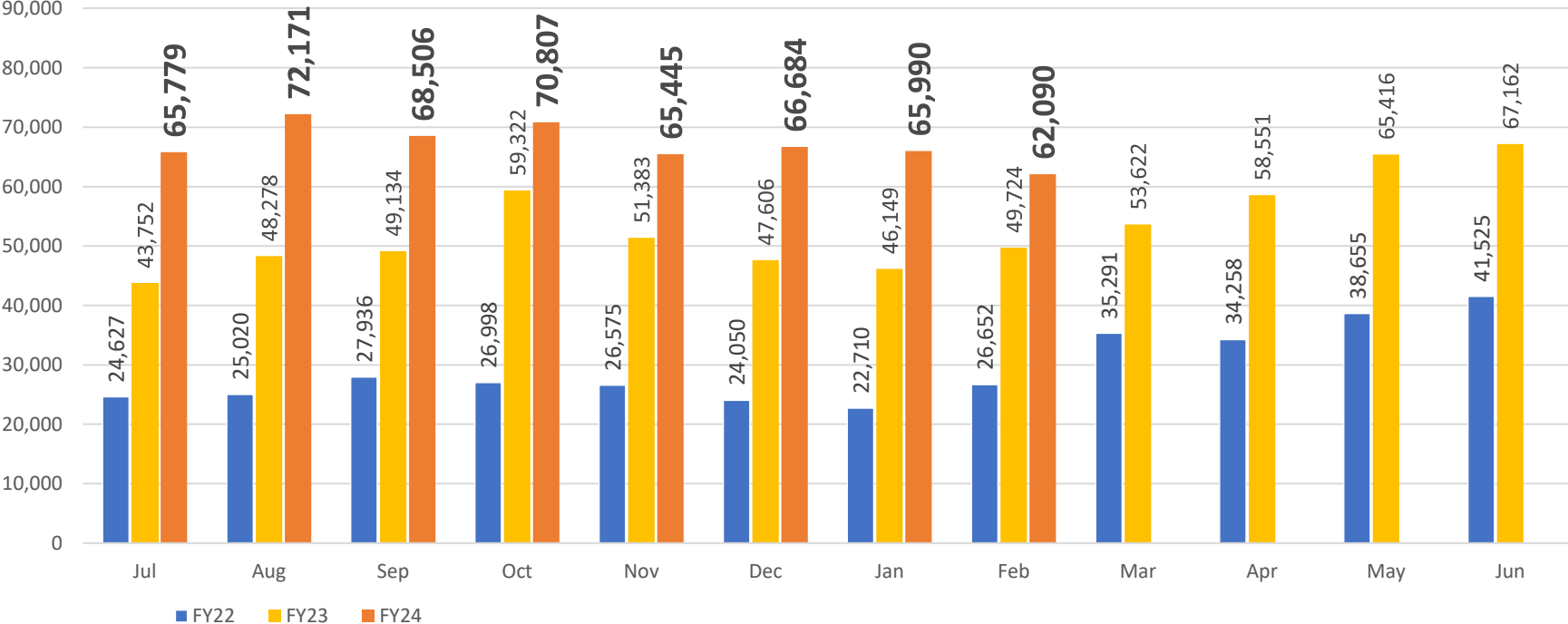
- Average weekend boardings down 8% from FY19 (pre-COVID) for February.



Monthly Ridership

February Ridership = 62,090

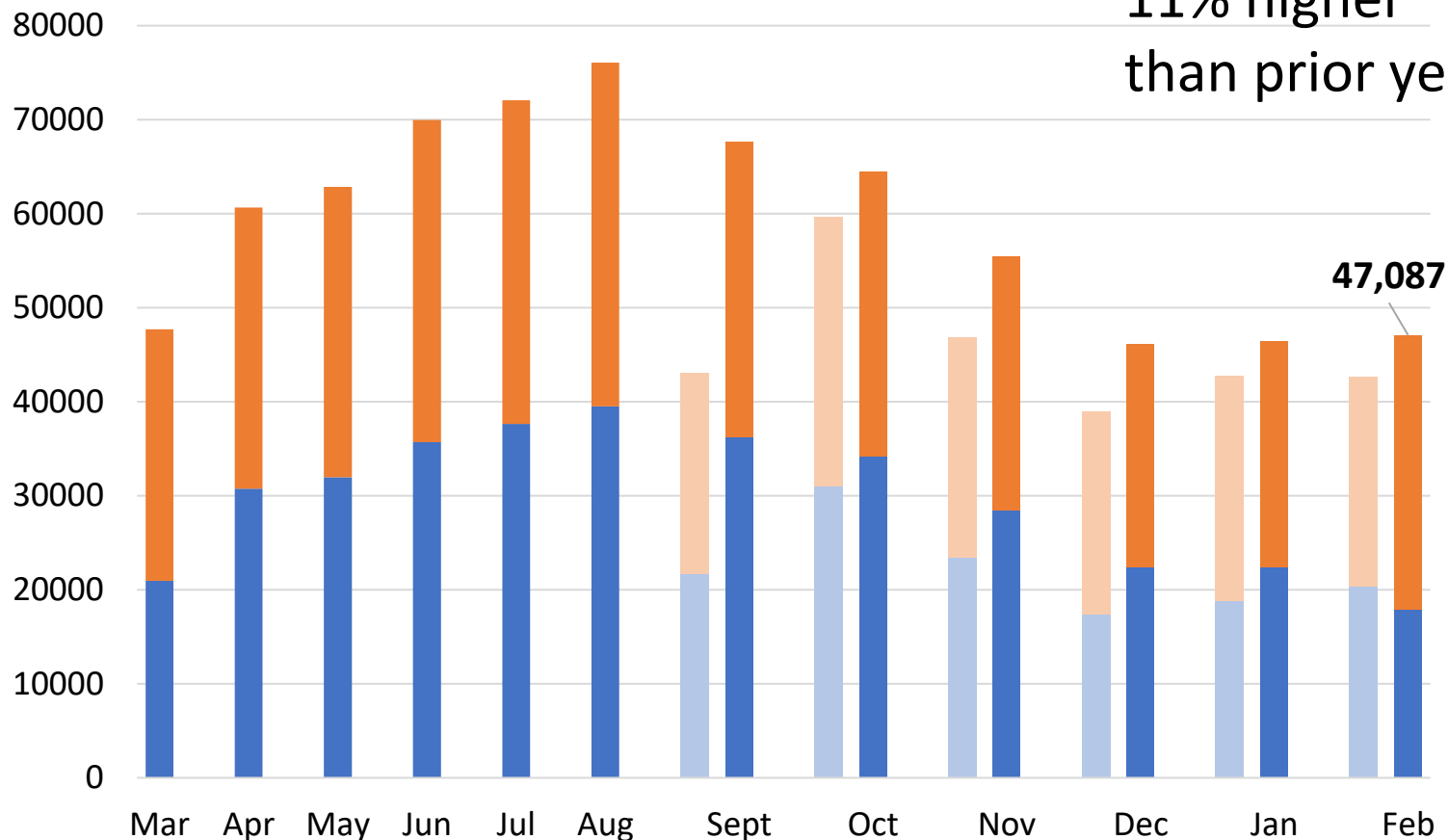
- 25% over Feb 2023
- 15% under Feb 2019 (pre-COVID)
- 12-month ridership tracking 4% over 2019



Pathway Counts

September 2022 – February 2024

11% higher
than prior year



Bicyclists

Pedestrians



Construction Progress



Setting concrete formwork for the Windsor Station platform

Construction Progress



Placing concrete in the formwork for the Windsor Station platform



Construction Progress



Removing concrete formwork from the Windsor Station platform after the concrete wall pour.

Construction Progress



Removing bolts from the old crossing panels at McDowell Boulevard

Construction Progress

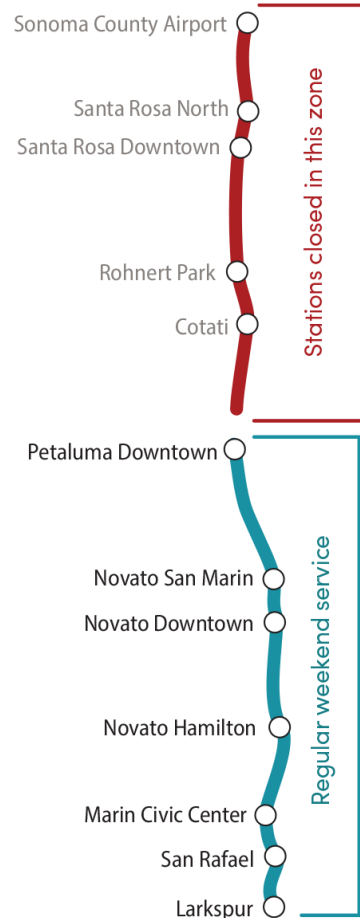


Laying out concrete ties at the Petaluma North Station in preparation for the upcoming track shutdown – March 23rd & 24th)



Partial System Closures

Partial System Closure March 23–24 and April 13–14



- These stations will be closed on March 23–24 and April 13–14 (**dates subject to change due to weather conditions*)
- No service to and from these stations
- All southbound trips will begin at the Petaluma Downtown station
- Trains will operate regular weekend service in this zone
- Free parking available at
 - Petaluma Downtown
 - Novato San Marin
 - Novato Downtown
 - Novato Hamilton
 - Larkspur
- Trains will continue to connect with the Larkspur Ferry for travel to and from San Francisco
- Northbound trips will end at the Petaluma Downtown station

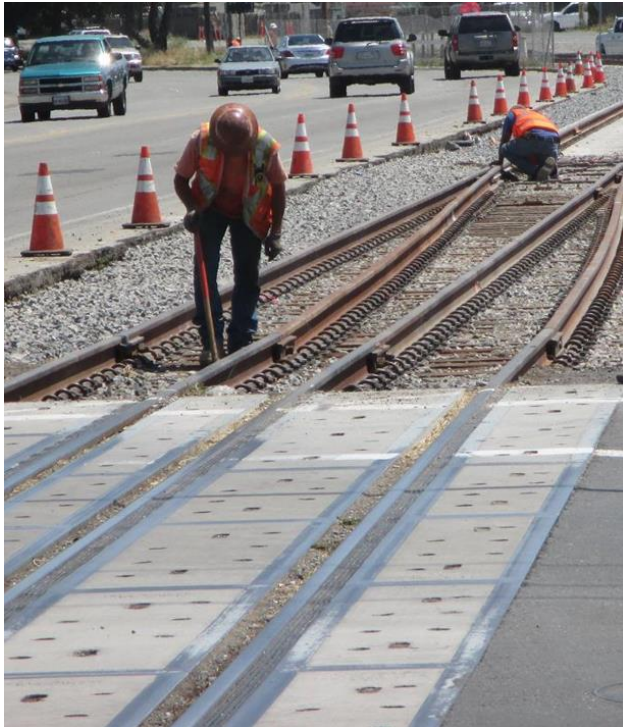


March Partial System Closure

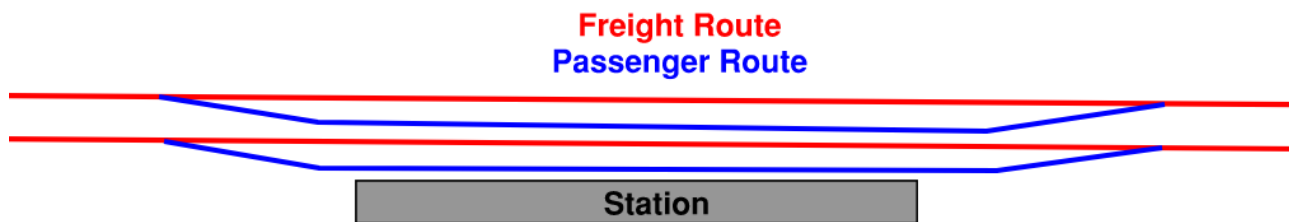
- Petaluma North Station construction requires a weekend service closure from Airport to Cotati Station.
- **March 23 & 24** -- SMART will operate the weekend schedule **from Petaluma Downtown to Larkspur.**
- Section of track will be removed and replaced with switch and a second track (gauntlet track)



Gauntlet Tracks



- SMART uses gauntlet tracks at stations to allow wider freight trains to pass and narrower passenger trains to pull into the station
- All stations north of the Ignacio Wye were constructed with gauntlet tracks to allow passage of freight trains



April Partial System Closure

- Second closure in April for railroad crossing reconstruction at McDowell Blvd.
- **April 13 & 14** -- SMART will operate the weekend schedule from **Petaluma Downtown to Larkspur.**
- Outreach will be conducted for both closures, including ferry transfers at Larkspur.




Fare Free Pilot Program

- Beginning April 1, 2024, **youth** ages 18 and under, and **seniors** ages 65 and older, will enjoy fare-free rides on SMART
- Conductors will continue to check passenger fares; youth and seniors may be requested to provide proof of age, such as a state ID, driver's license, or student ID

beginning April 2024

Youth & Seniors
ride **Fare Free**
on SMART!

Take transit &
travel car free!



Questions?

Connect with us:

www.SonomaMarinTrain.org



Customer Service:

CustomerService@SonomaMarinTrain.org

(707) 794- 3330

